

INSTALLATION MANUAL

roller system, key switch, remote control and finishing

YOUR SKILLS & OUR TOOLS

Poolmotive® strives to strengthen the swimming pool industry. By standing together and supporting people in the market, and by improving products.

Our reason for innovating is to make things better, to improve on what came before. We work together with swimming pool builders, adapting products to needs and learning and growing by listening to our clients.

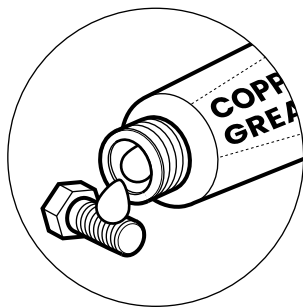
As a manufacturer and innovator, Poolmotive knows what it means to build a really good and sustainable swimming pool. And what is needed to maintain it smartly and effectively. It requires knowledge, deep professional knowledge and sometimes that can be underestimated, but not by us.

It is our responsibility to support you as a professional in this beautiful industry. That starts with understanding and communication, by thinking smartly together about products, to make them better. A well-thought-out installation is the start of a better product. Our innovative products should help you deliver a better, more sustainable and more beautiful swimming pool.

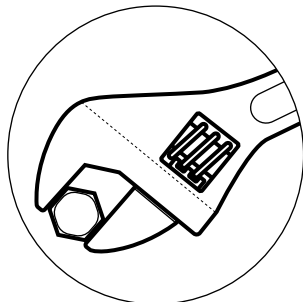
TIPS & TRICKS		3
CONCRETE POOL		
	- pre-assembly	4
	- mounting kit	5
	- create a water lock	6
	- install roller tube with motor	7
	- fix the roller tube with motor	8
BRICKED POOL		
	- pre-assembly	9
	- mounting kit	10
	- create a water lock	11
	- install roller tube with motor	12
	- fix the roller tube with motor	13
POLYSTYRENE BLOCK POOL		
	- pre-assembly	14
	- mounting kit	15
	- create a water lock	16
	- install roller tube with motor	17
	- fix the roller tube with motor	18
PREFAB POOL		
	- mounting kit	19
	- create a water lock	20
	- install roller tube with motor	21
	- fix the roller tube with motor	22
CONNECTING CONTROL BOX		23
CONNECTING KEY SWITCH		24
CONNECTING 2 CHANNEL REMOTE CONTROL		25
CONNECTING 4 CHANNEL REMOTE CONTROL		26
PROGRAMMING END POSITIONS		27
ERROR MESSAGES		28
BENCH COVER PANEL 750 X 750 MM		
	- pre-assembly	29
	- assembly	30
VERTICAL CAVE PANEL 750 MM		
VERTICAL CAVE PANEL 1000MM		
VERTICAL CAVE PANEL 750/1000 MM		
	- pre-assembly	31
	- pre-assembly	32
	- assembly	33
HORIZONTAL PANEL		
	- pre-assembly	34
	- assembly	35

TIPS & TRICS

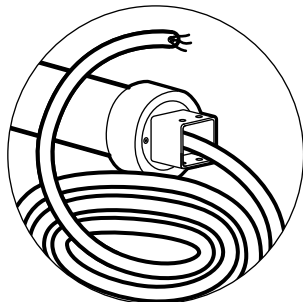
EN



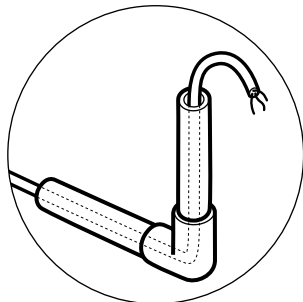
USE COPPER GREASE ON ALL THREADED RODS



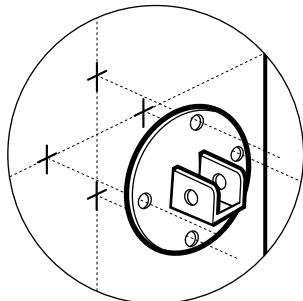
USE TITANIUM TOOLS WHICH ARE ONLY USED FOR STAINLESS STEEL



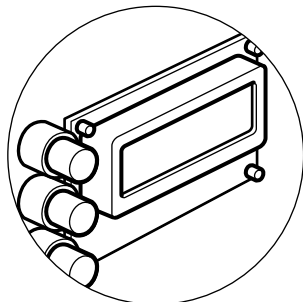
EXTENDING THE MOTOR CABLE ONLY WITH THE ORIGINAL CABLE IN A JOINT BOX THAT IS RESINED



TRANSFER THE MOTOR CABLE THROUGH A PVC PIPE TO THE TECHNICAL ROOM



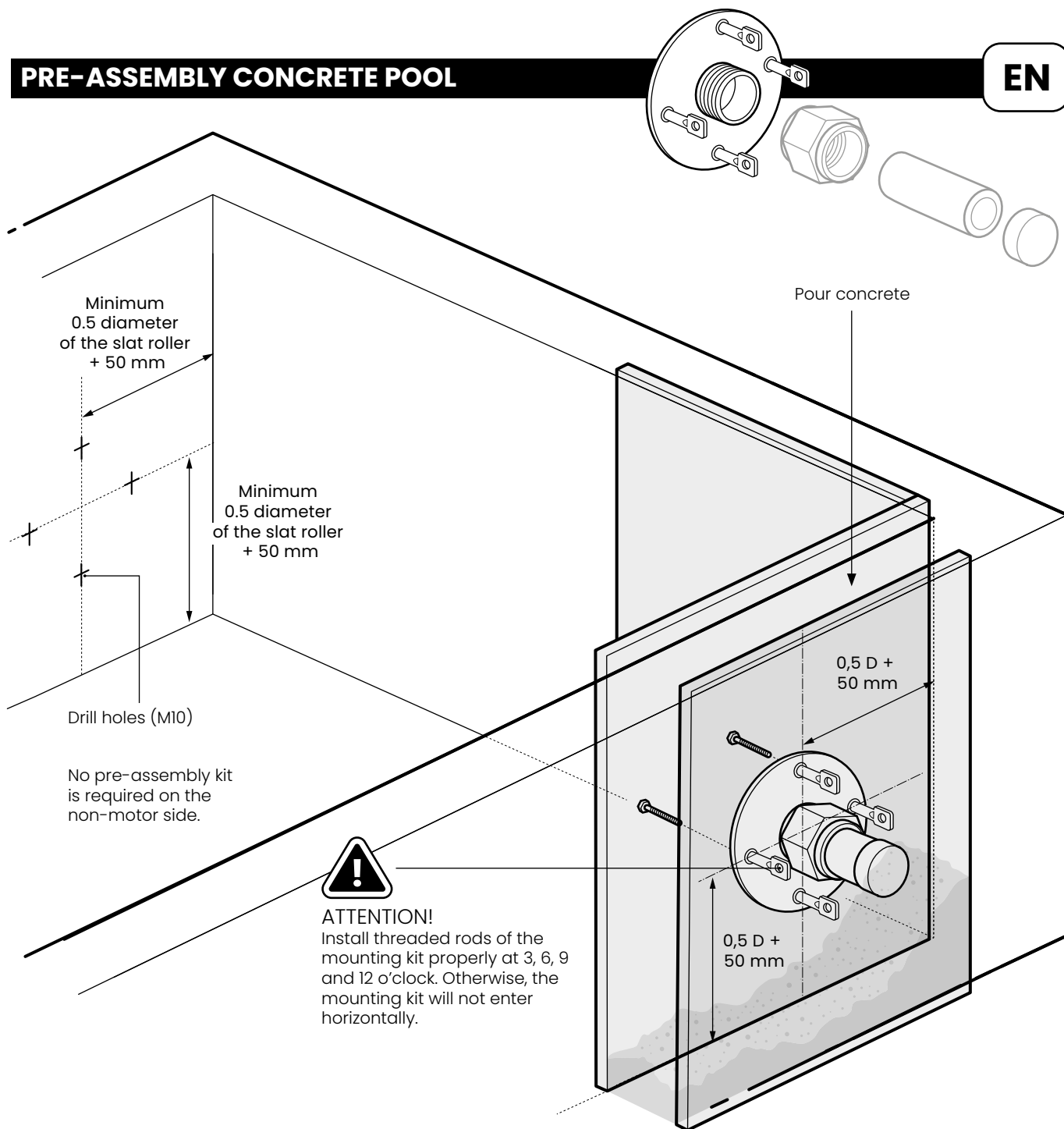
DRILL THE HOLES OF THE MOUNTING KIT PROPERLY AT 3-6-9-12 O'CLOCK, THEN ASSEMBLY WILL BE EVEN EASIER



NOTE THE NUMBER OF PULSES ON THE DISPLAY OF THE CONTROL BOX IN BOTH THE OPEN AND CLOSED POSITION

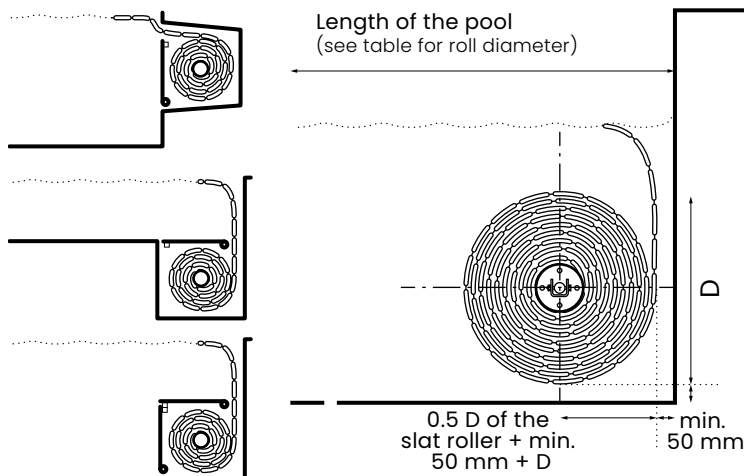
PRE-ASSEMBLY CONCRETE POOL

EN



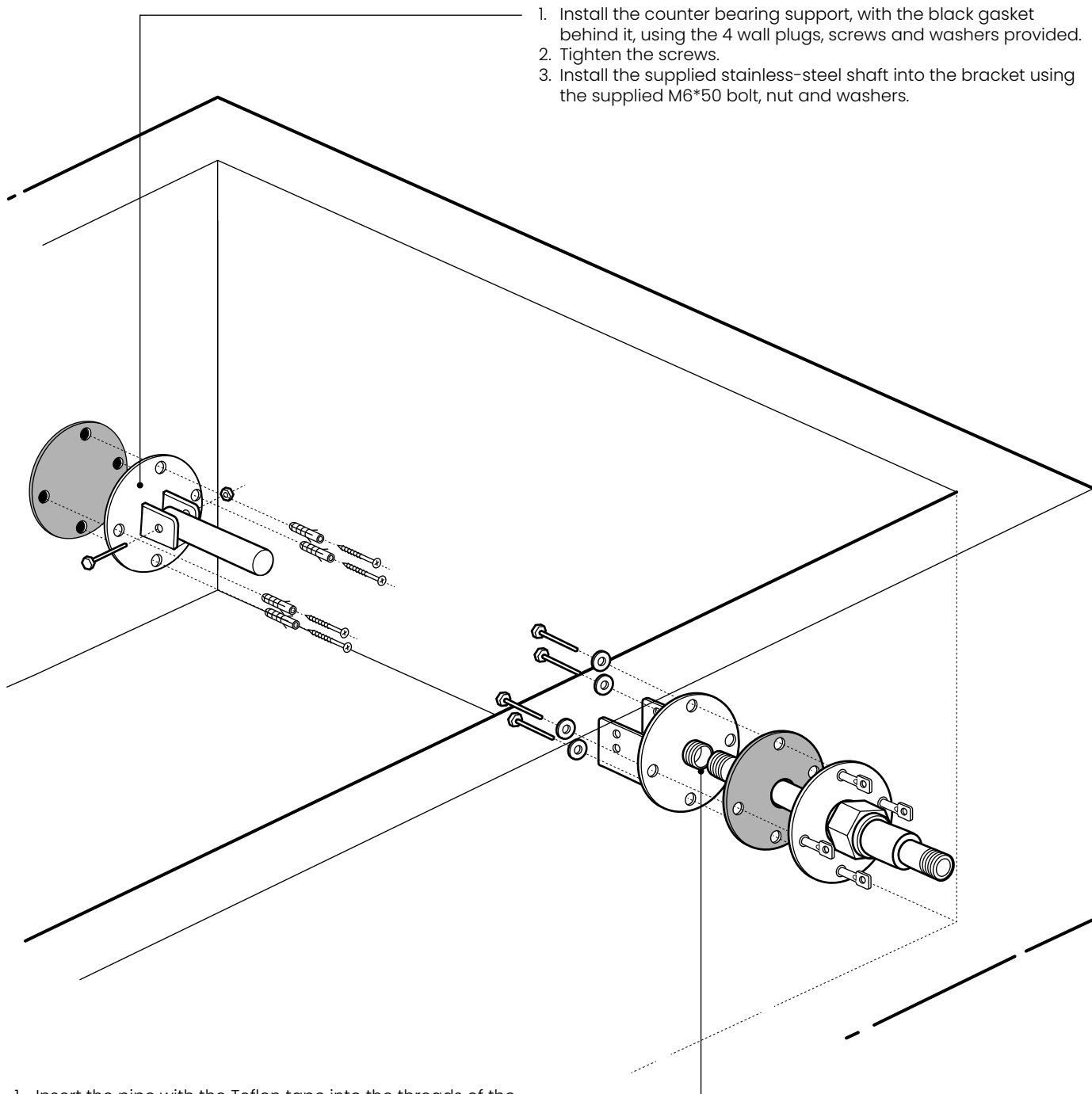
Roll diameter	250 Nm (ø 140mm)	450/600 Nm (ø 170mm)
Pool length	Diameter (D) slat roller	Diameter (D) slat roller
4 meters	354mm	367mm
5 meters	390mm	402mm
6 meters	422mm	433mm
7 meters	453mm	463mm
8 meters	481mm	491mm
9 meters	508mm	517mm
10 meters	533mm	542mm
11 meters	558mm	566mm
12 meters	581mm	589mm
13 meters	603mm	611mm
14 meters	625mm	632mm
15 meters	646mm	653mm

These dimensions apply to a slat height of 16 mm.



MOUNTING KIT CONCRETE POOL

EN

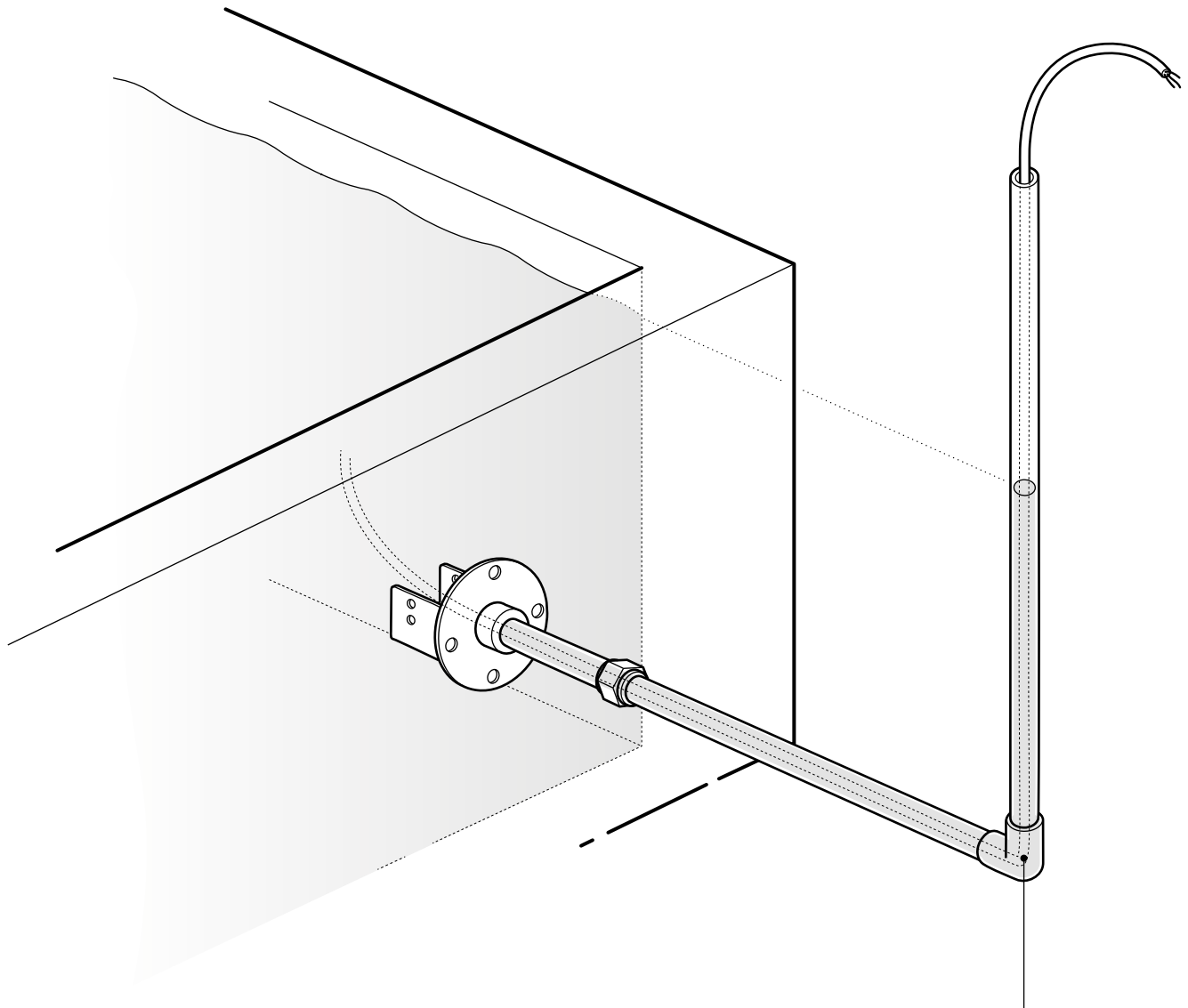


1. Install the counter bearing support, with the black gasket behind it, using the 4 wall plugs, screws and washers provided.
2. Tighten the screws.
3. Install the supplied stainless-steel shaft into the bracket using the supplied M6*50 bolt, nut and washers.

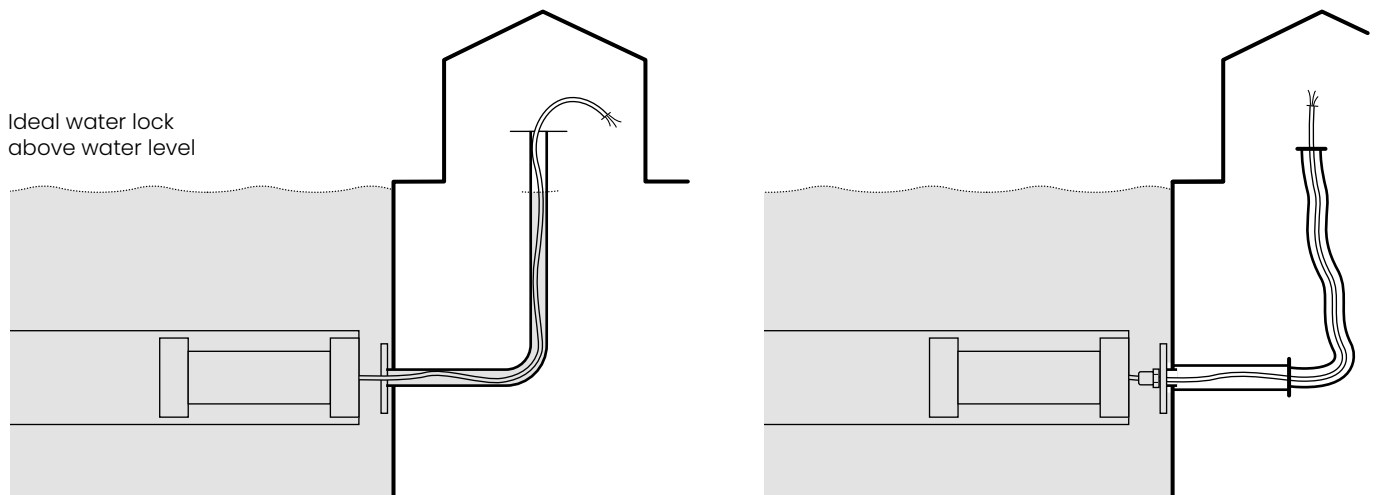
1. Insert the pipe with the Teflon tape into the threads of the back of the motor mount and tighten it tightly.
2. Install the motor mount, with the black gasket behind it, using the 4 bolts and washers provided.
3. Tighten the bolts.

CREATE A WATER LOCK

EN



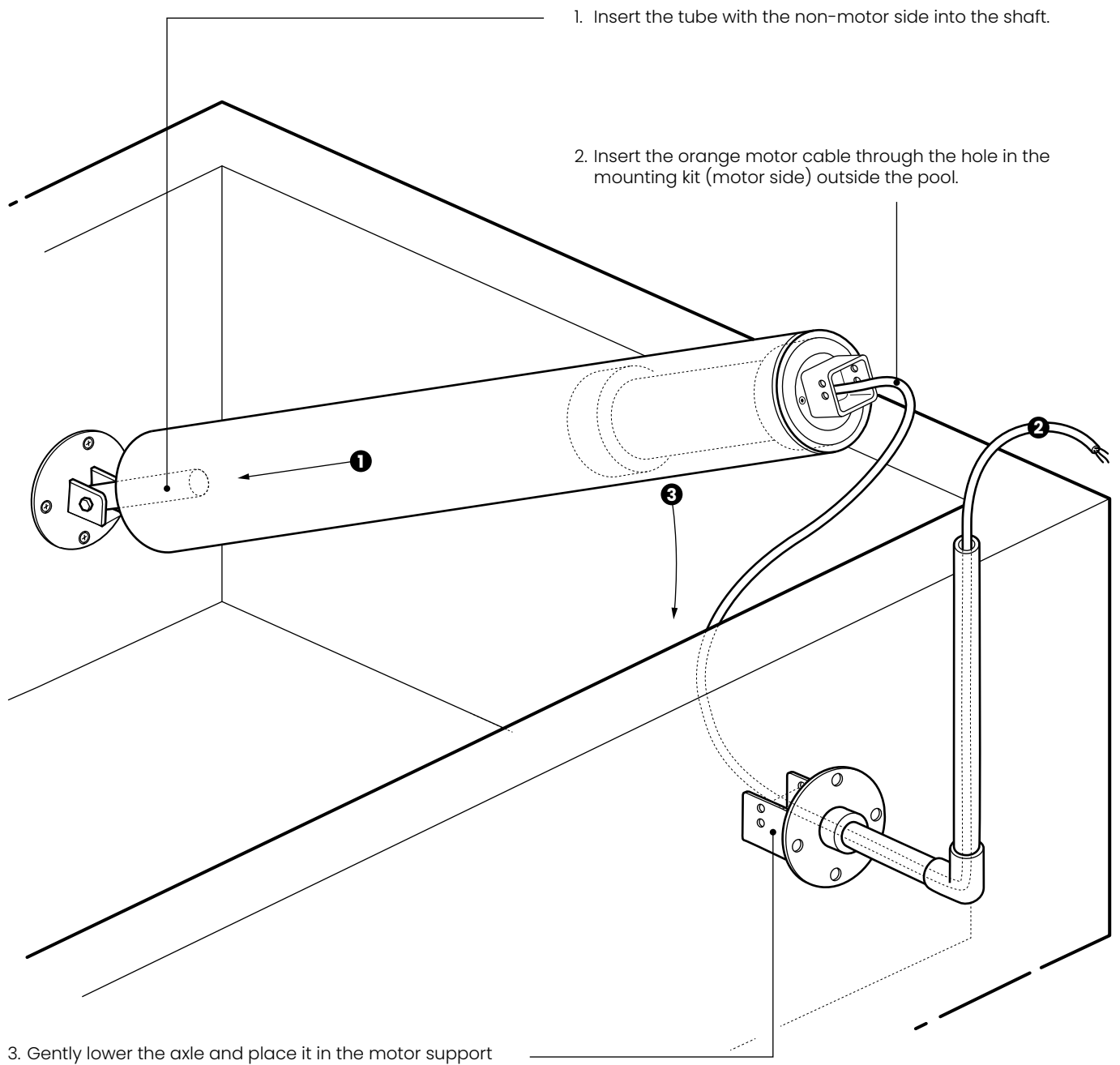
Ideal water lock
above water level



Ideal water lock
above water level

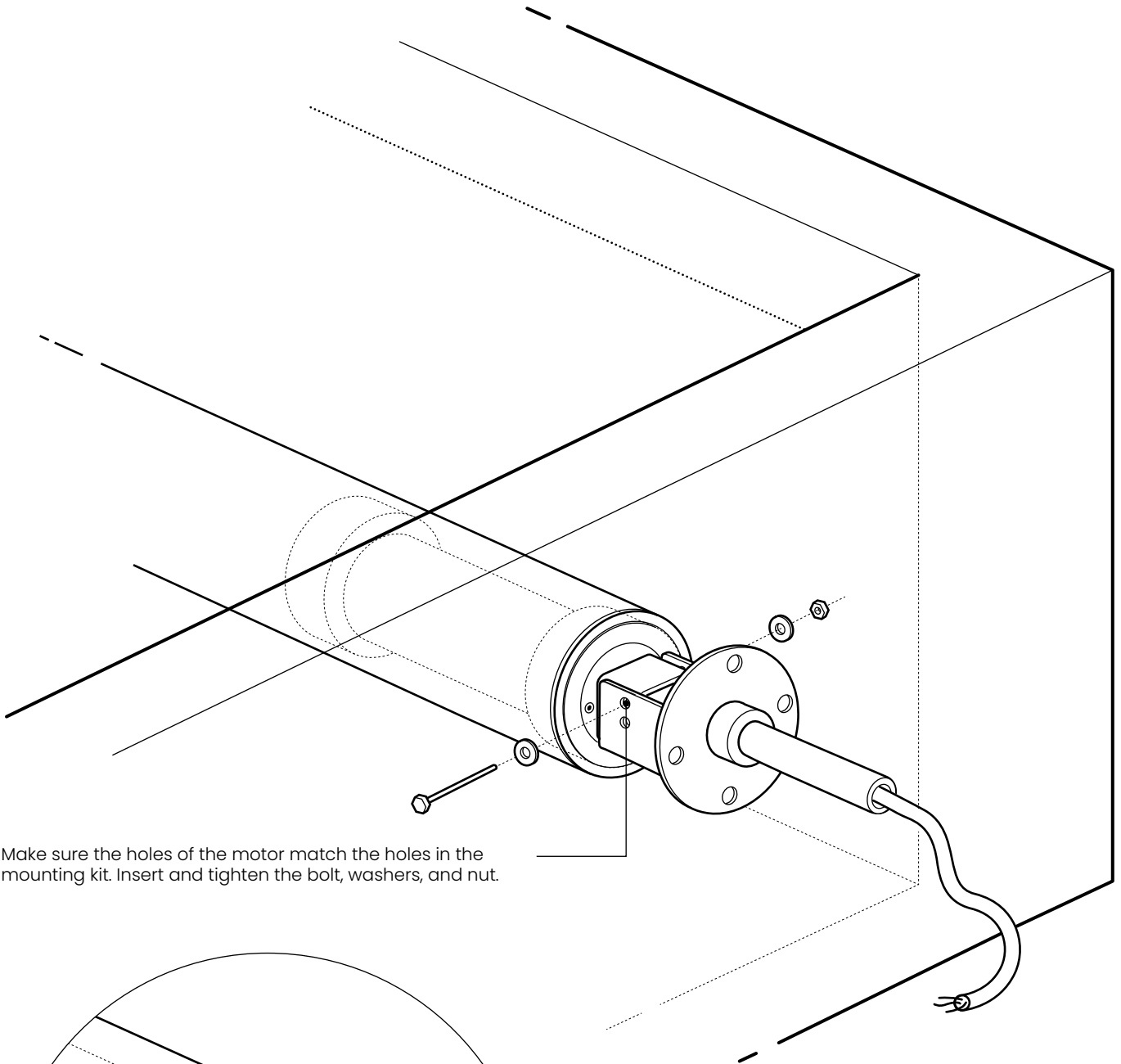
INSTALL ROLLER TUBE WITH MOTOR

EN

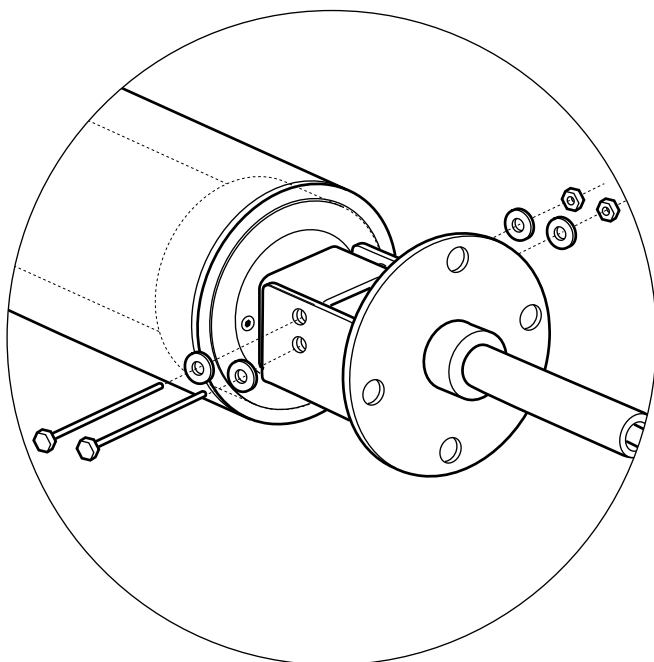


FIX THE ROLLER TUBE WITH MOTOR

EN



Make sure the holes of the motor match the holes in the mounting kit. Insert and tighten the bolt, washers, and nut.

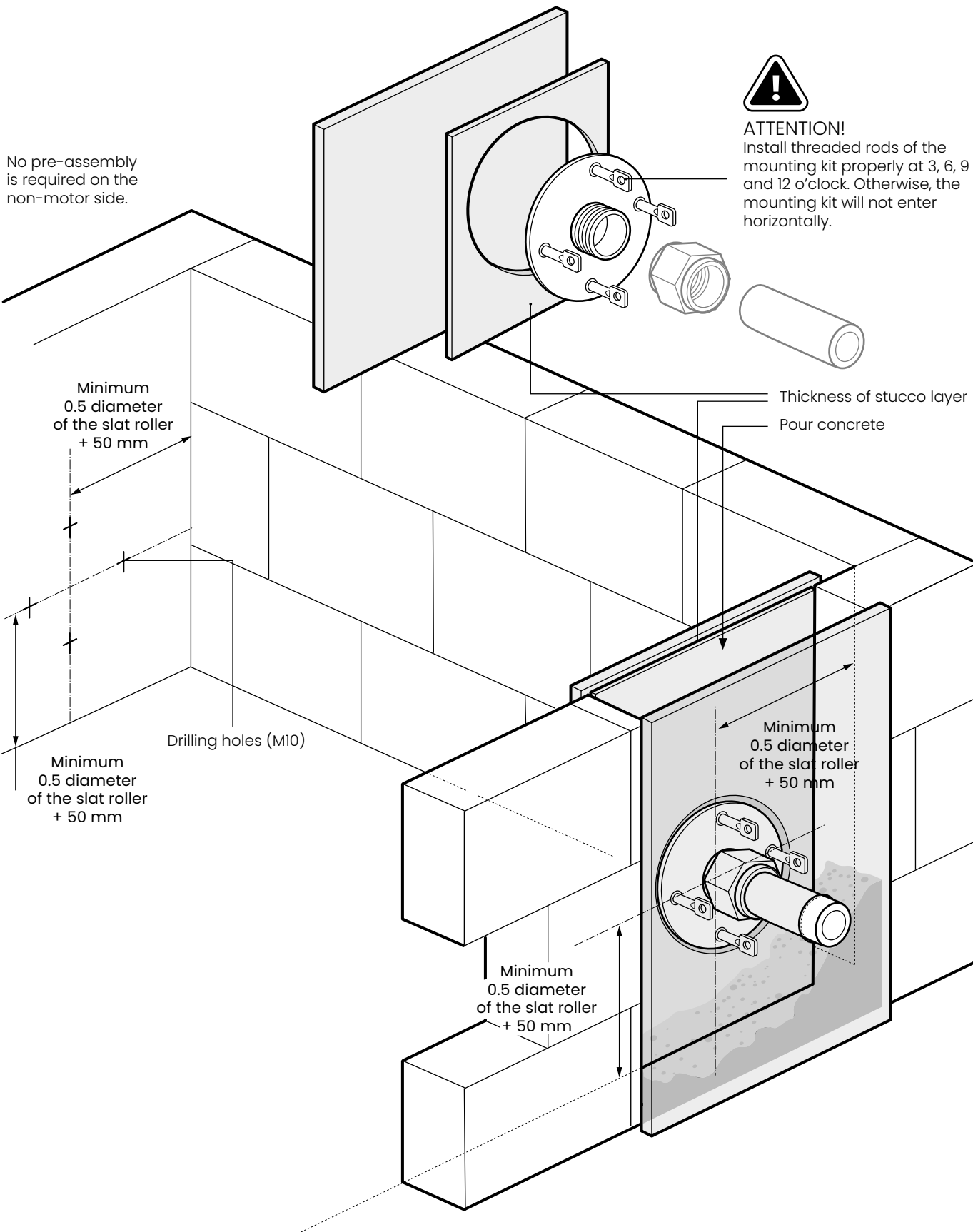


ATTENTION!
With the 450 NM and the 600 NM motor you have to use 2 bolts.

For the next step
go to page 23

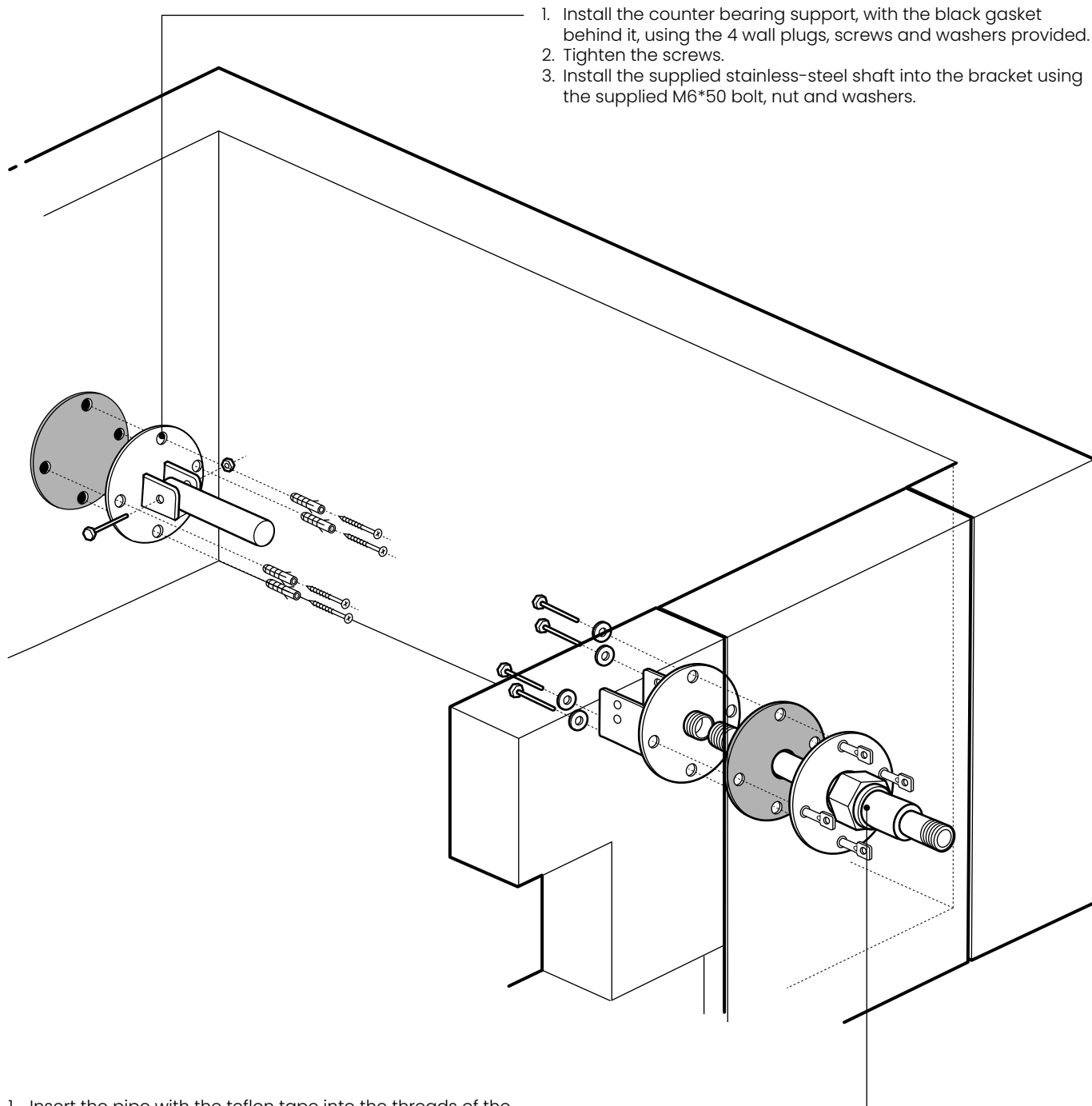
PRE-ASSEMBLY BRICKED POOL

EN



MOUNTING KIT BRICKED POOL

EN

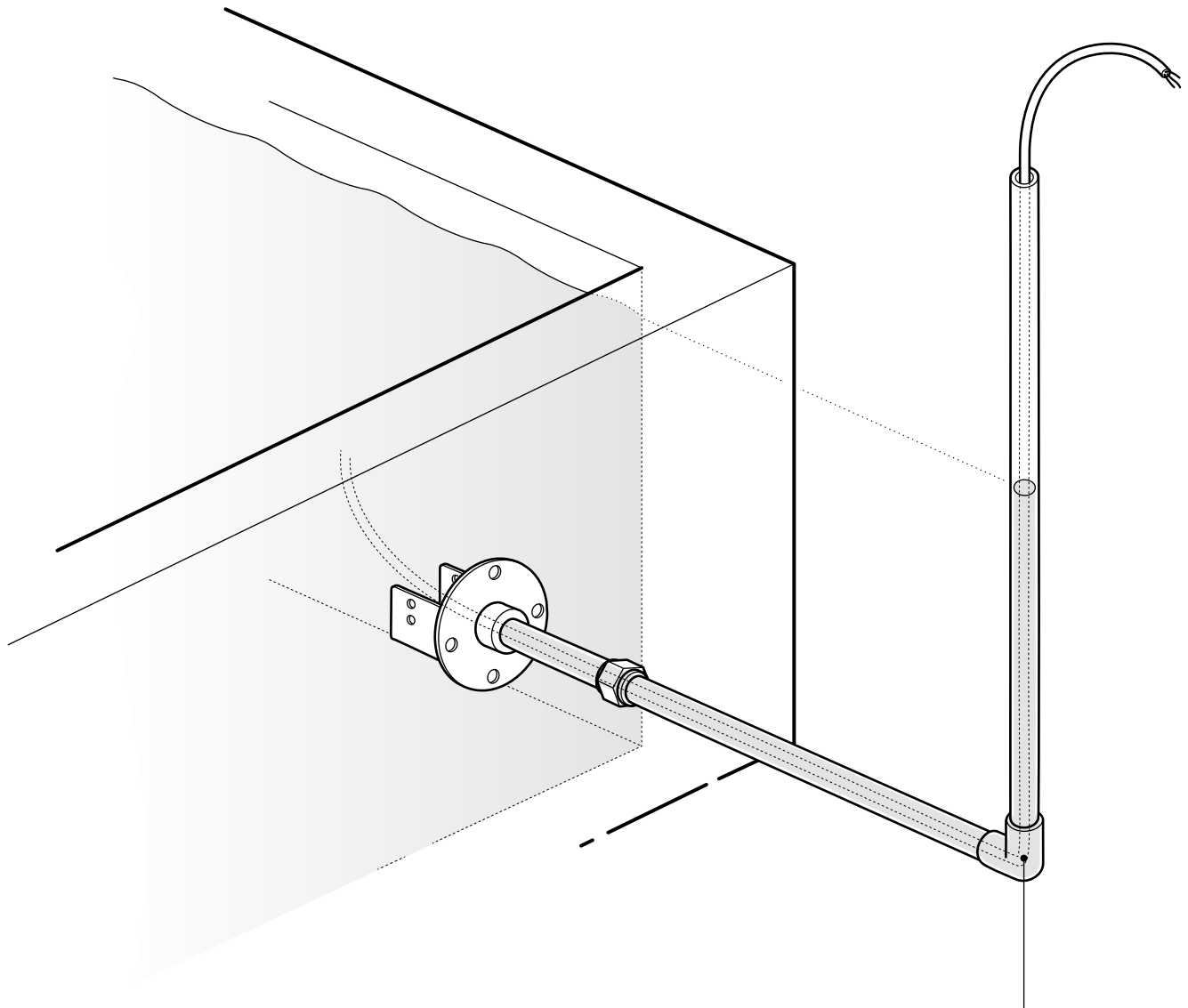


1. Install the counter bearing support, with the black gasket behind it, using the 4 wall plugs, screws and washers provided.
2. Tighten the screws.
3. Install the supplied stainless-steel shaft into the bracket using the supplied M6*50 bolt, nut and washers.

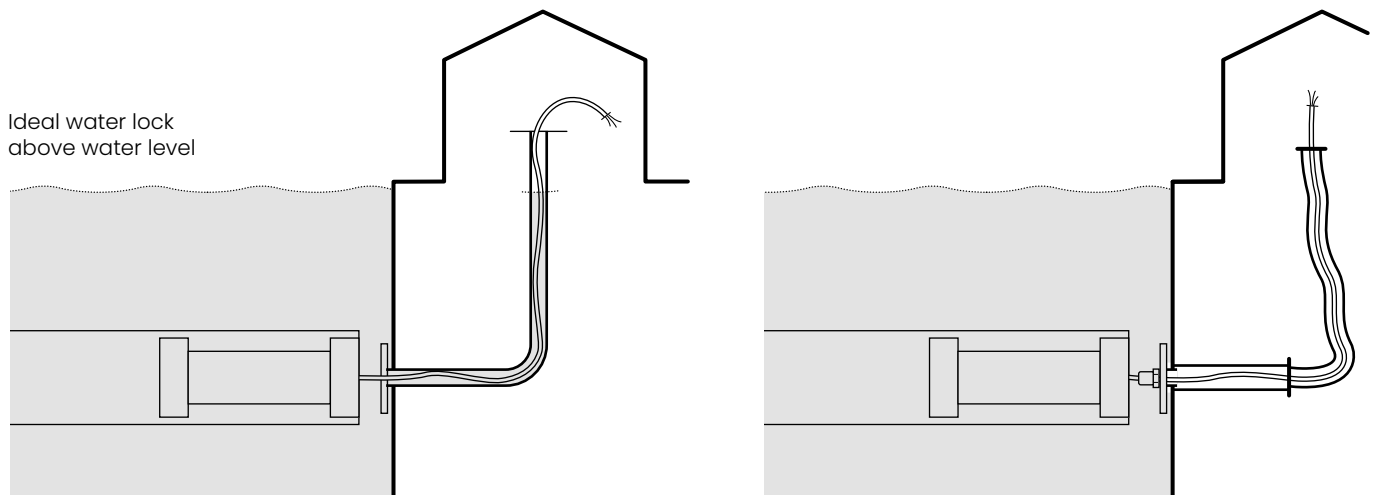
1. Insert the pipe with the teflon tape into the threads of the back of the motor mount and tighten it tightly.
2. Install the motor mount, with the black gasket behind it, using the 4 bolts and washers provided.
3. Tighten the bolts.

CREATE A WATER LOCK

EN



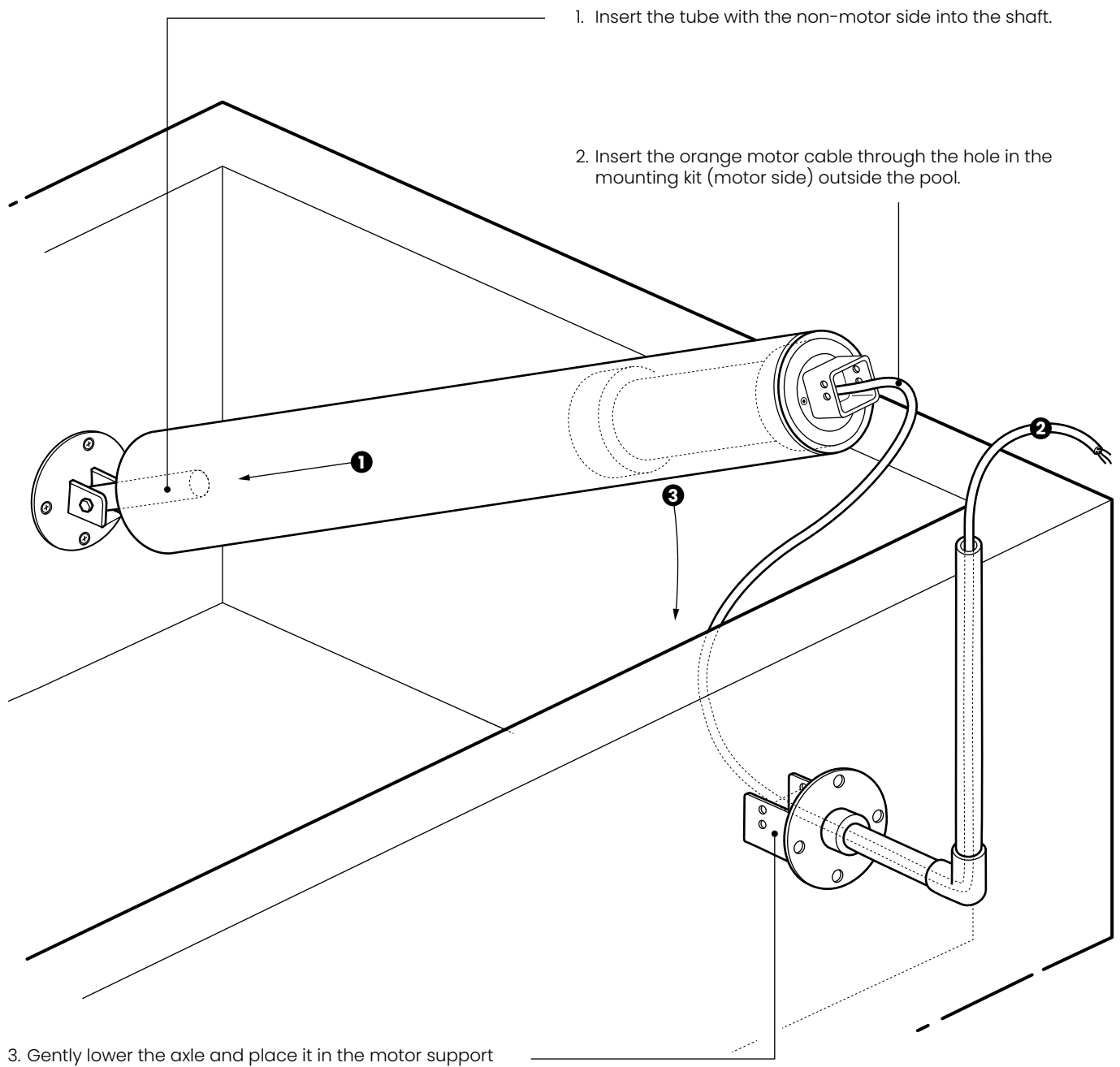
Ideal water lock above water level



Ideal water lock above water level

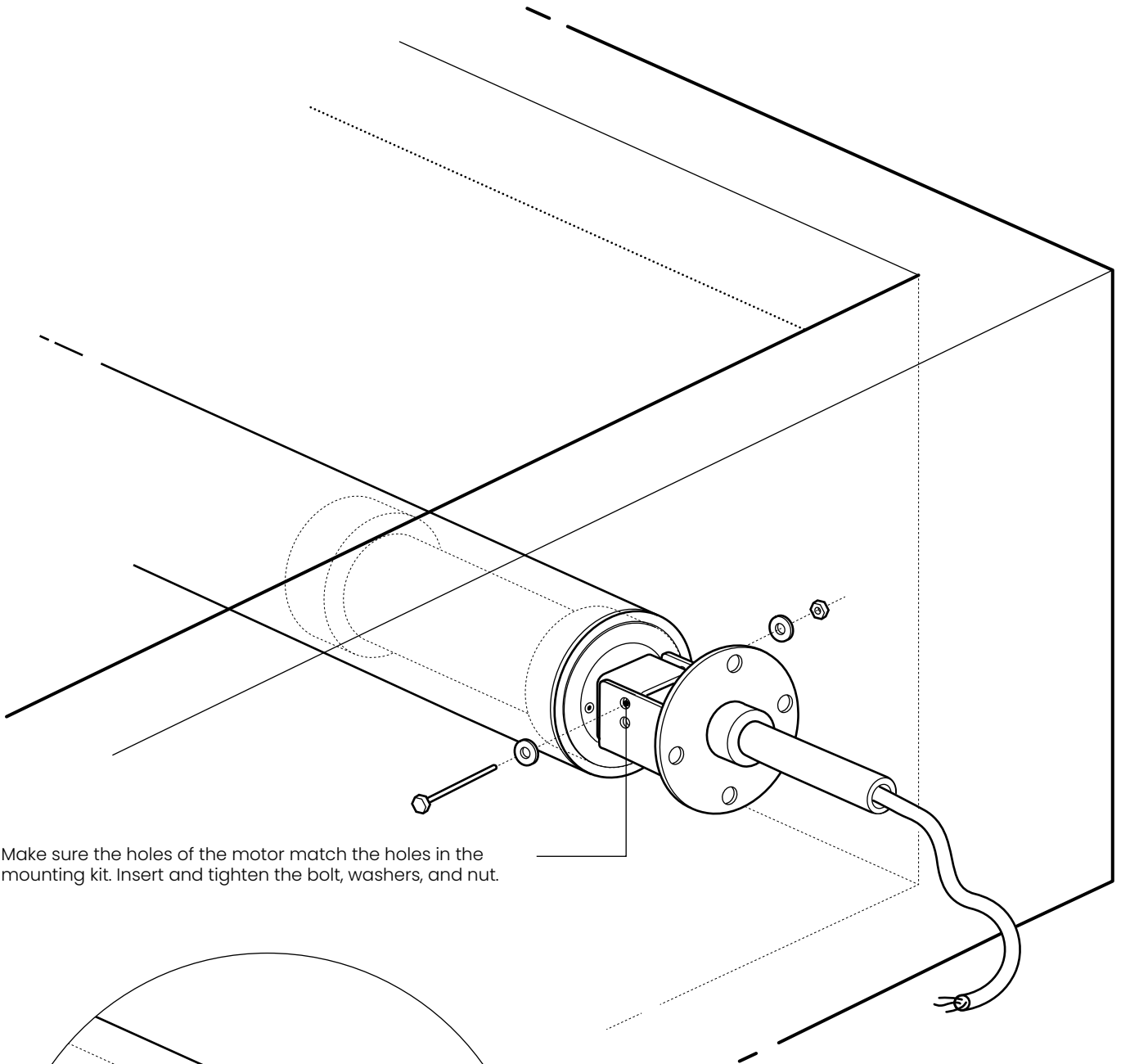
INSTALL ROLLER TUBE WITH MOTOR

EN

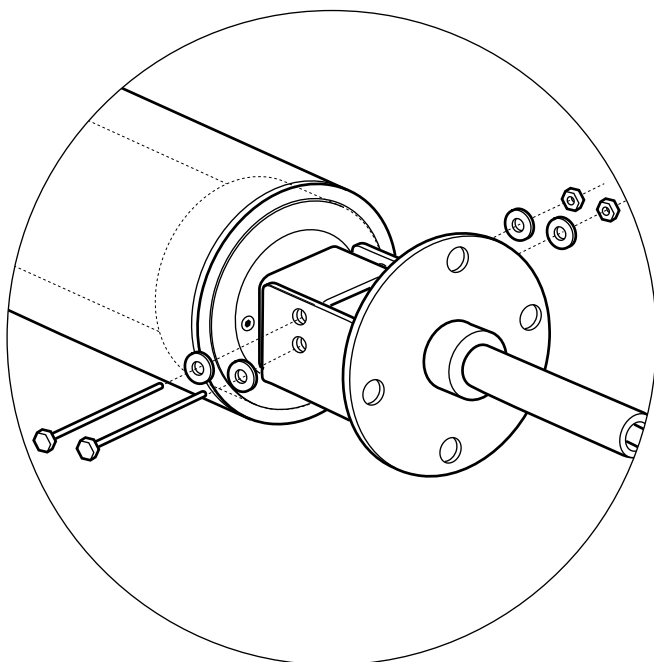


FIX THE ROLLER TUBE WITH MOTOR

EN



Make sure the holes of the motor match the holes in the mounting kit. Insert and tighten the bolt, washers, and nut.

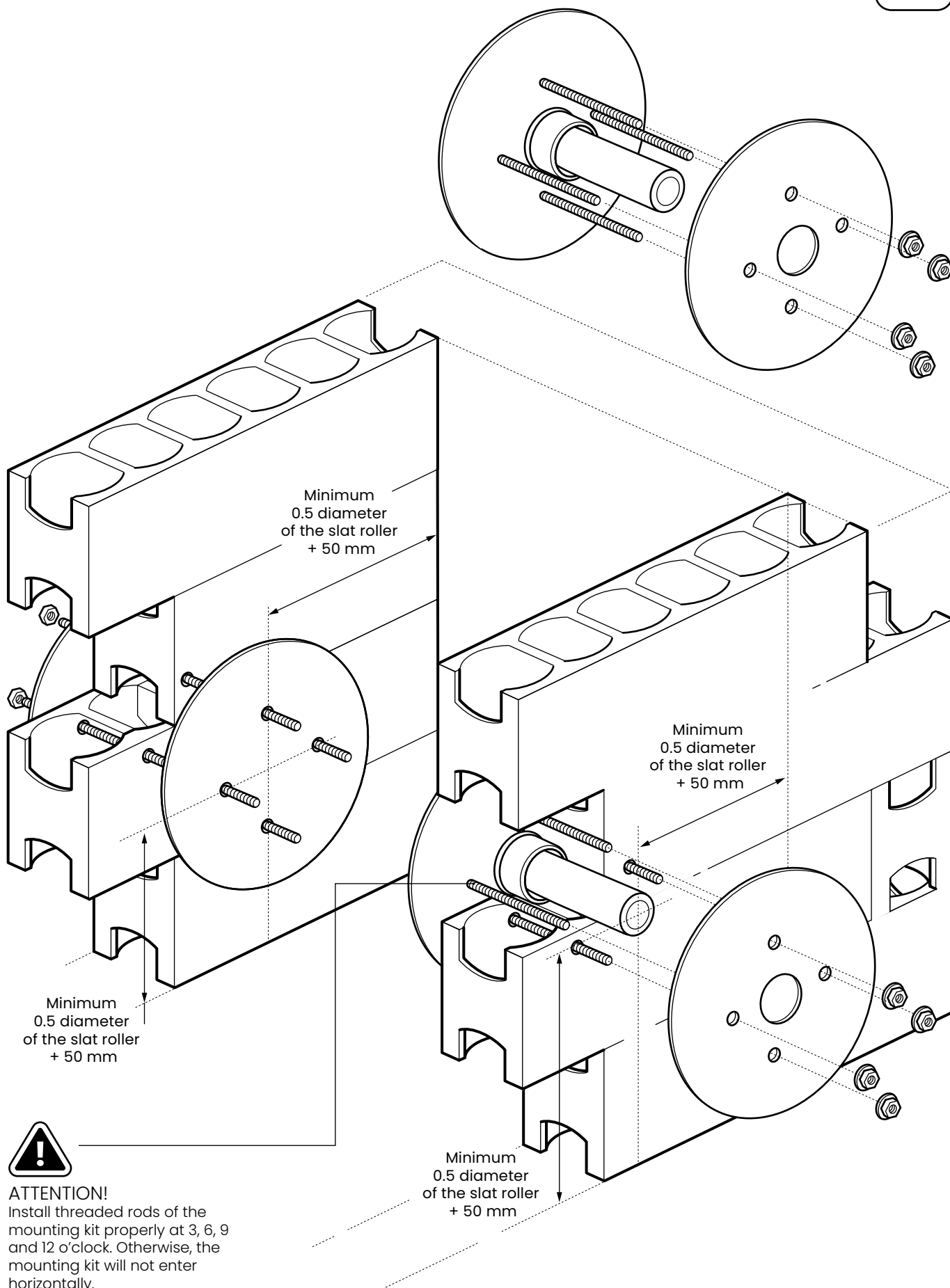


ATTENTION!
With the 450 NM and the 600 NM motor you have to use 2 bolts.

For the next step
go to page 23

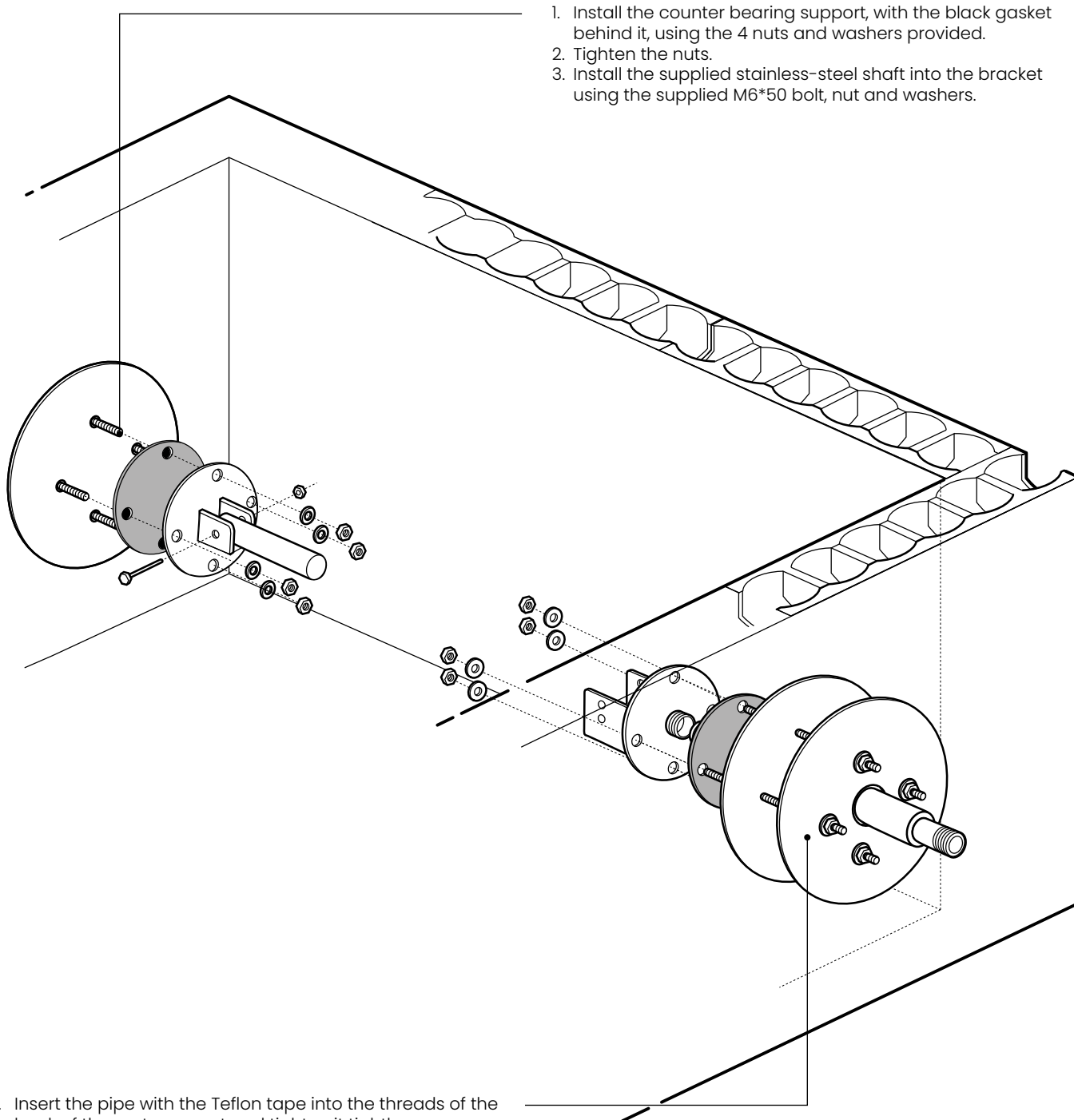
PRE-ASSEMBLY POLYSTYRENE BLOCK POOL

EN



MOUNTING KIT POLYSTYRENE BLOCK POOL

EN

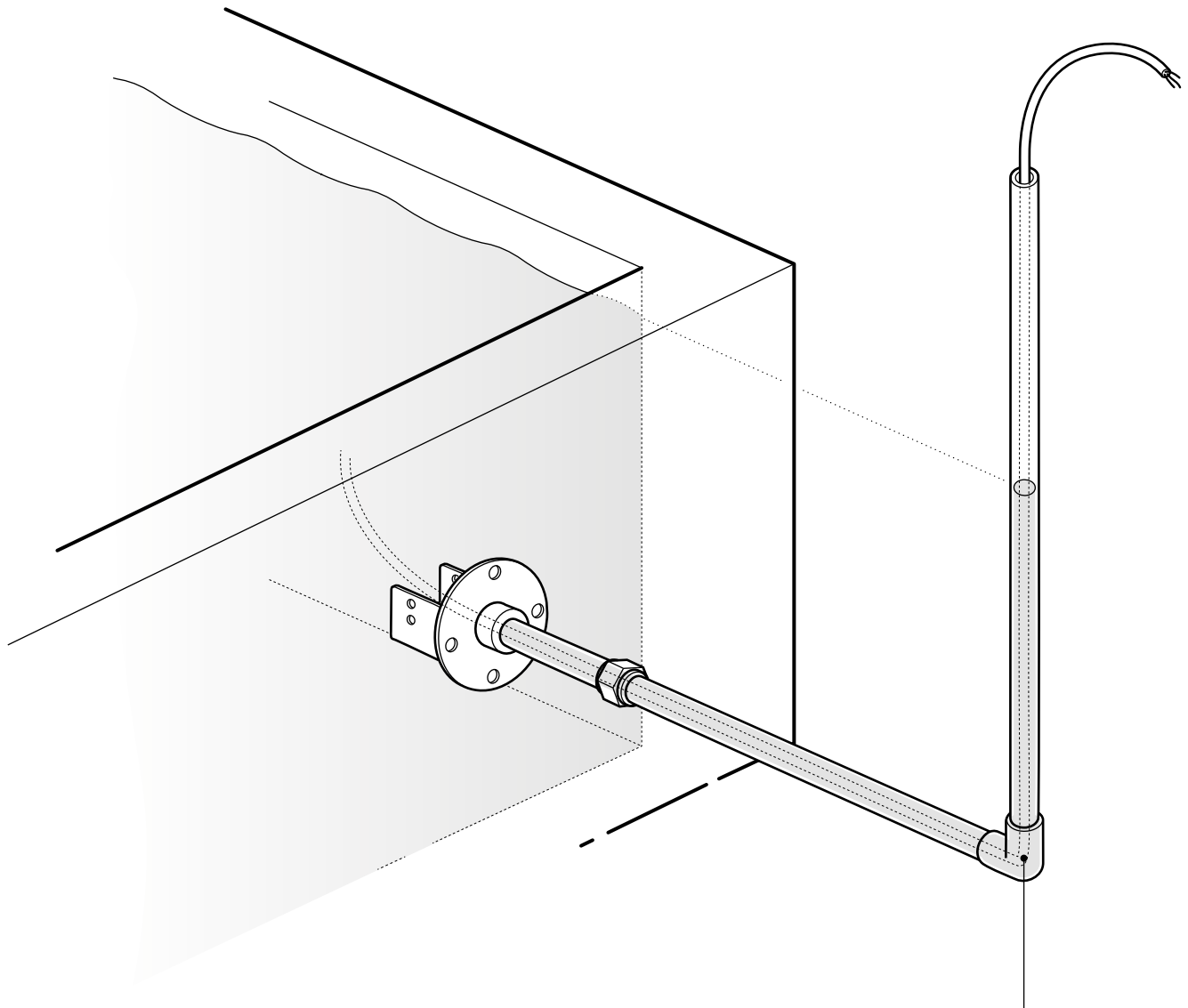


1. Install the counter bearing support, with the black gasket behind it, using the 4 nuts and washers provided.
2. Tighten the nuts.
3. Install the supplied stainless-steel shaft into the bracket using the supplied M6*50 bolt, nut and washers.

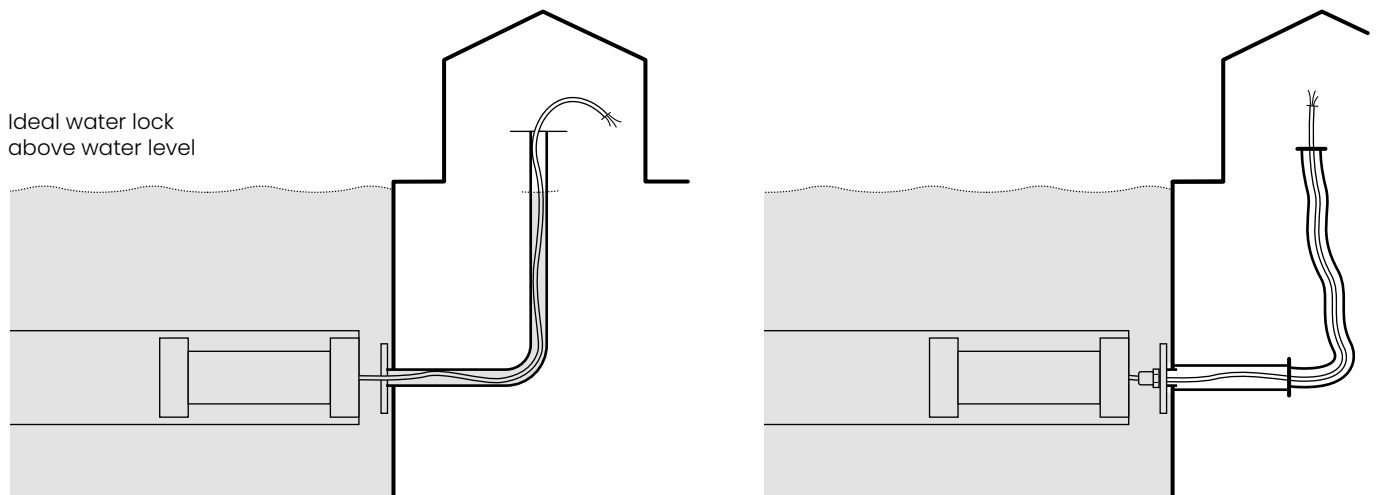
1. Insert the pipe with the Teflon tape into the threads of the back of the motor mount and tighten it tightly.
2. Install the motor mount, with the black gasket behind it, using the 4 bolts and washers provided.
3. Tighten the bolts.

CREATE A WATER LOCK

EN



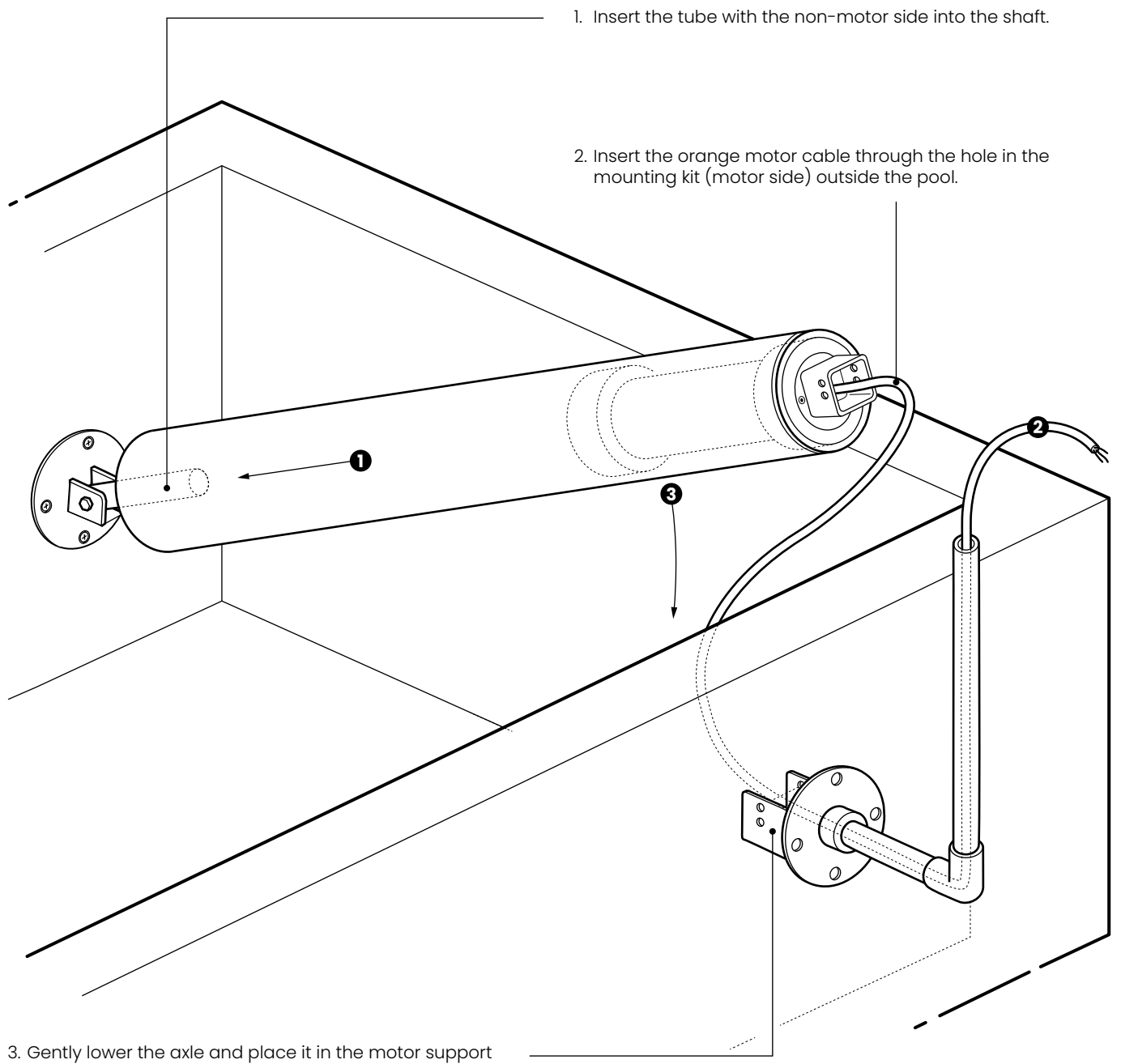
Ideal water lock above water level



Ideal water lock above water level

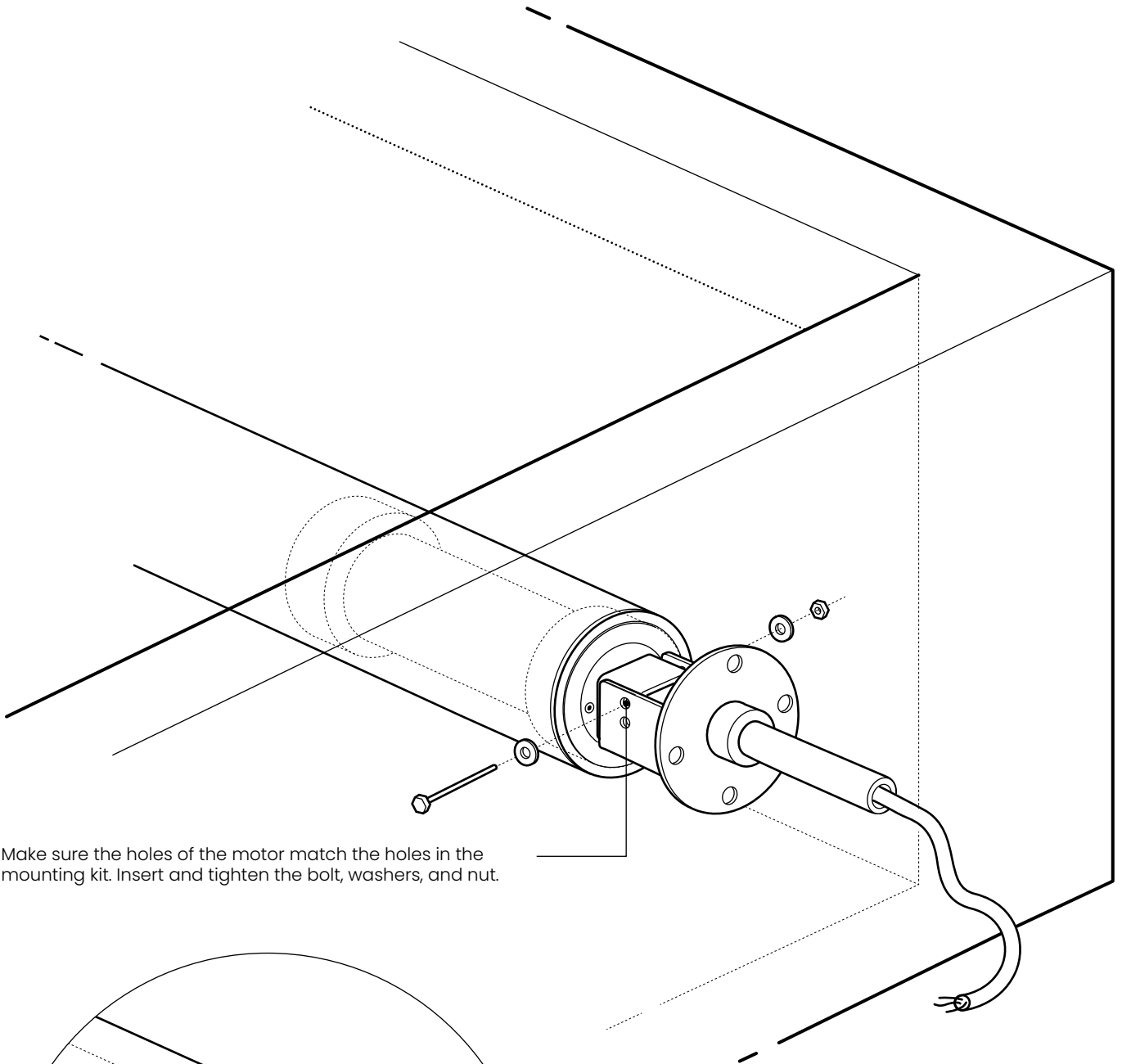
INSTALL ROLLER TUBE WITH MOTOR

EN

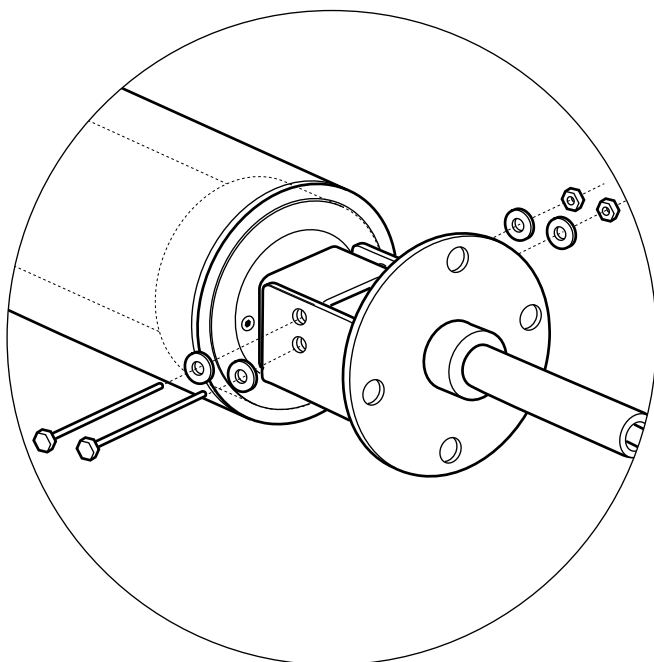


FIX THE ROLLER TUBE WITH MOTOR

EN



Make sure the holes of the motor match the holes in the mounting kit. Insert and tighten the bolt, washers, and nut.

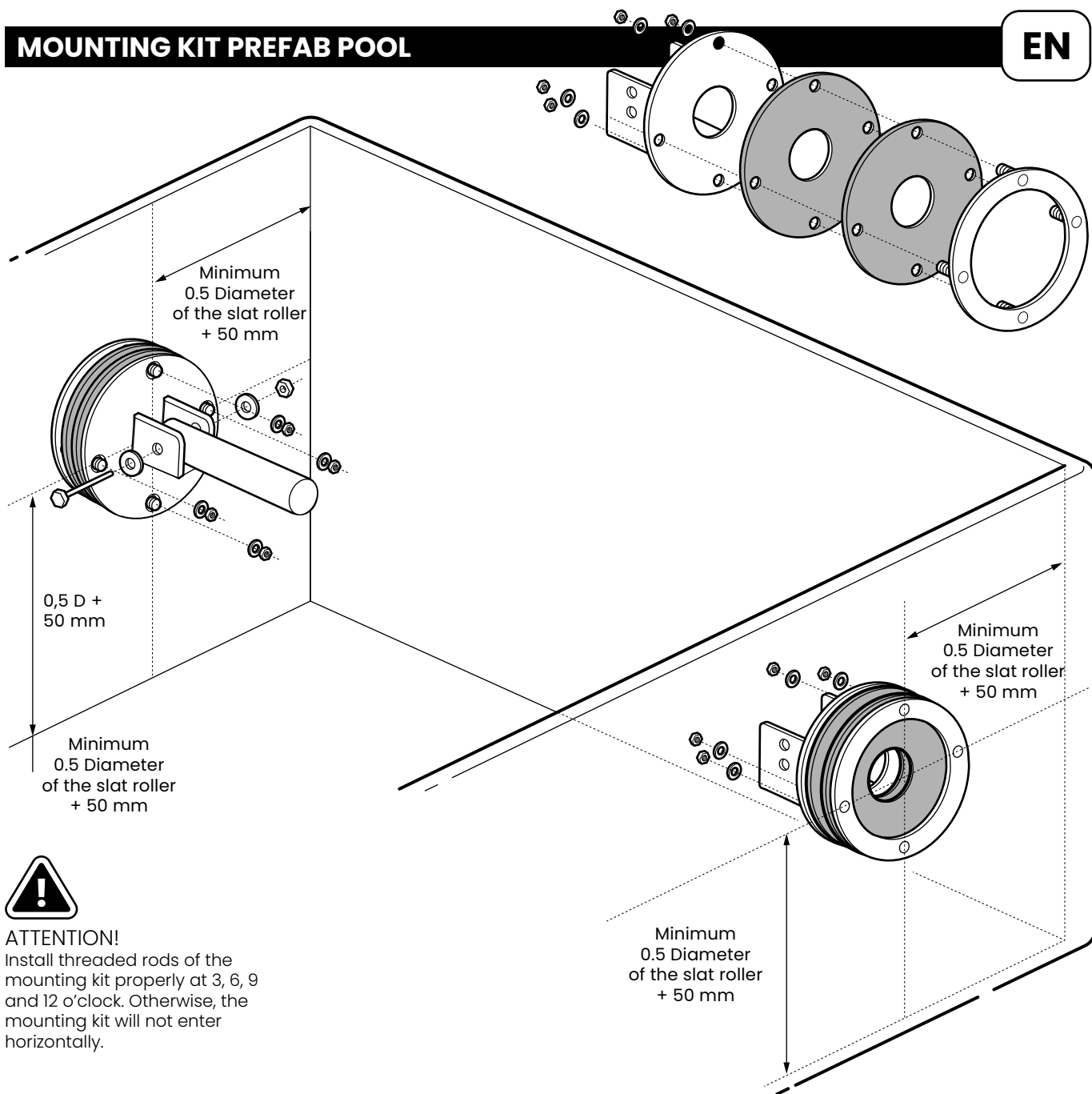


ATTENTION!
With the 450 NM and the 600 NM motor you have to use 2 bolts.

For the next step
go to page 23

MOUNTING KIT PREFAB POOL

EN

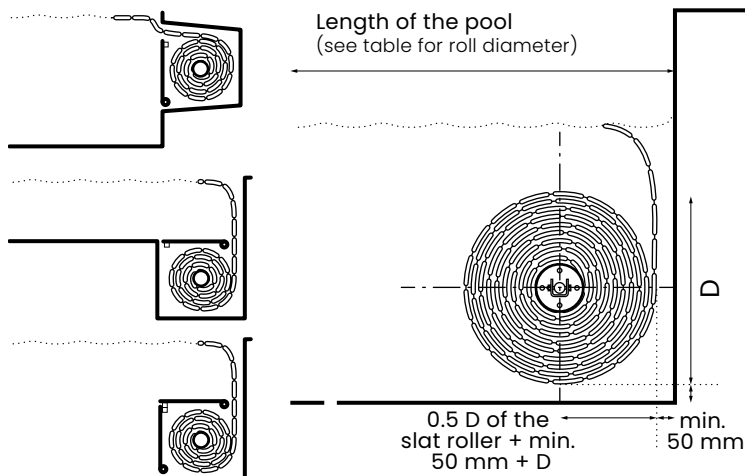


ATTENTION!

Install threaded rods of the mounting kit properly at 3, 6, 9 and 12 o'clock. Otherwise, the mounting kit will not enter horizontally.

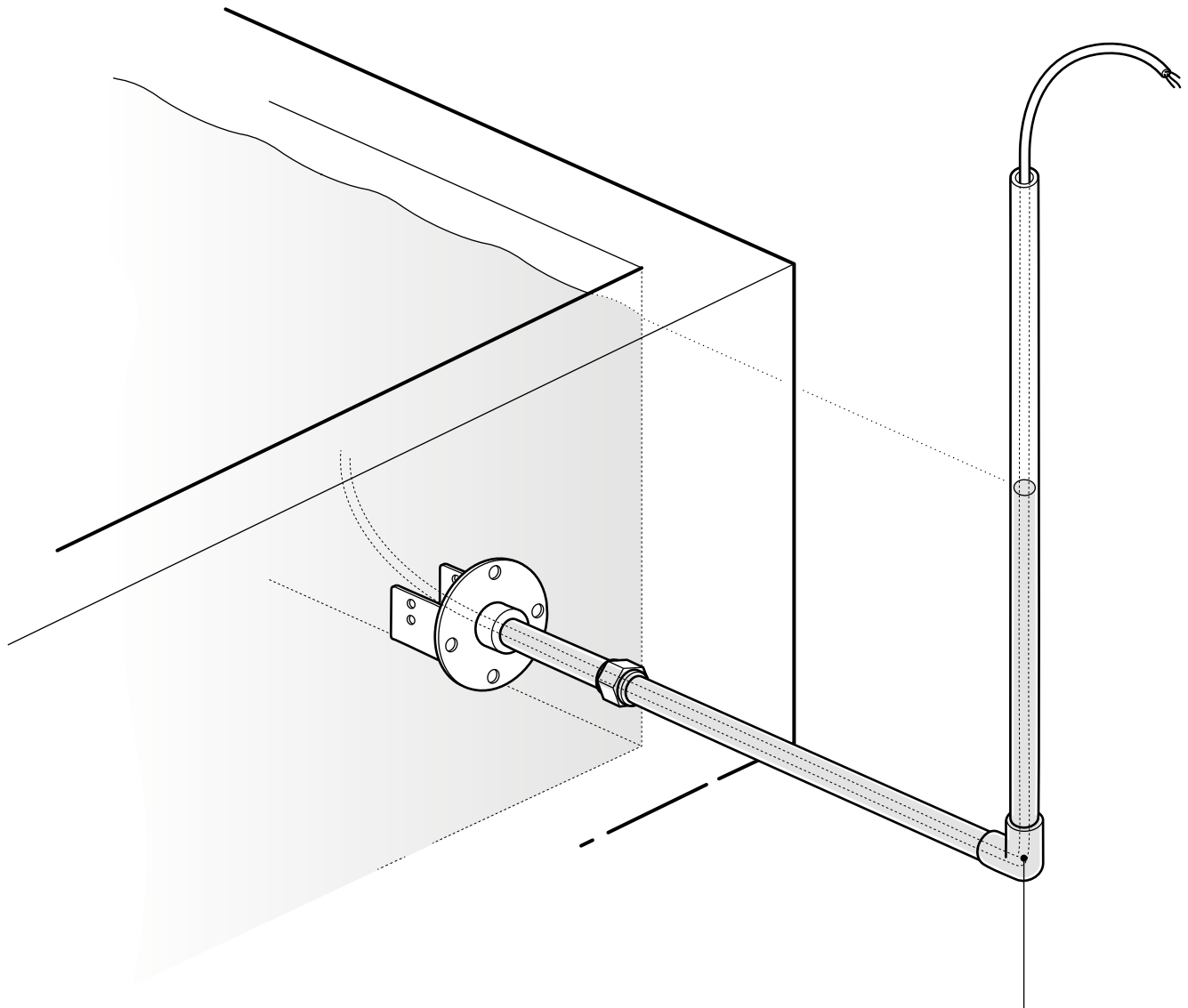
Roll diameter	250 Nm (ø 140mm)	450/600 Nm (ø 170mm)
Pool length	Diameter (D) slat roller	Diameter (D) slat roller
4 meters	354mm	367mm
5 meters	390mm	402mm
6 meters	422mm	433mm
7 meters	453mm	463mm
8 meters	481mm	491mm
9 meters	508mm	517mm
10 meters	533mm	542mm
11 meters	558mm	566mm
12 meters	581mm	589mm
13 meters	603mm	611mm
14 meters	625mm	632mm
15 meters	646mm	653mm

These dimensions apply to a slat height of 16 mm.

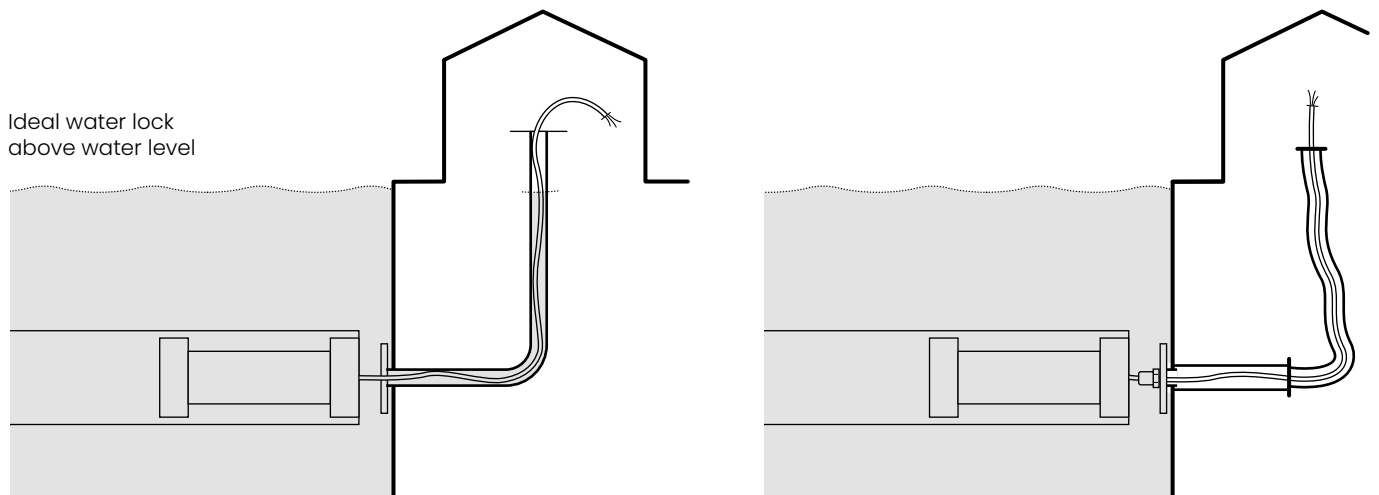


CREATE A WATER LOCK

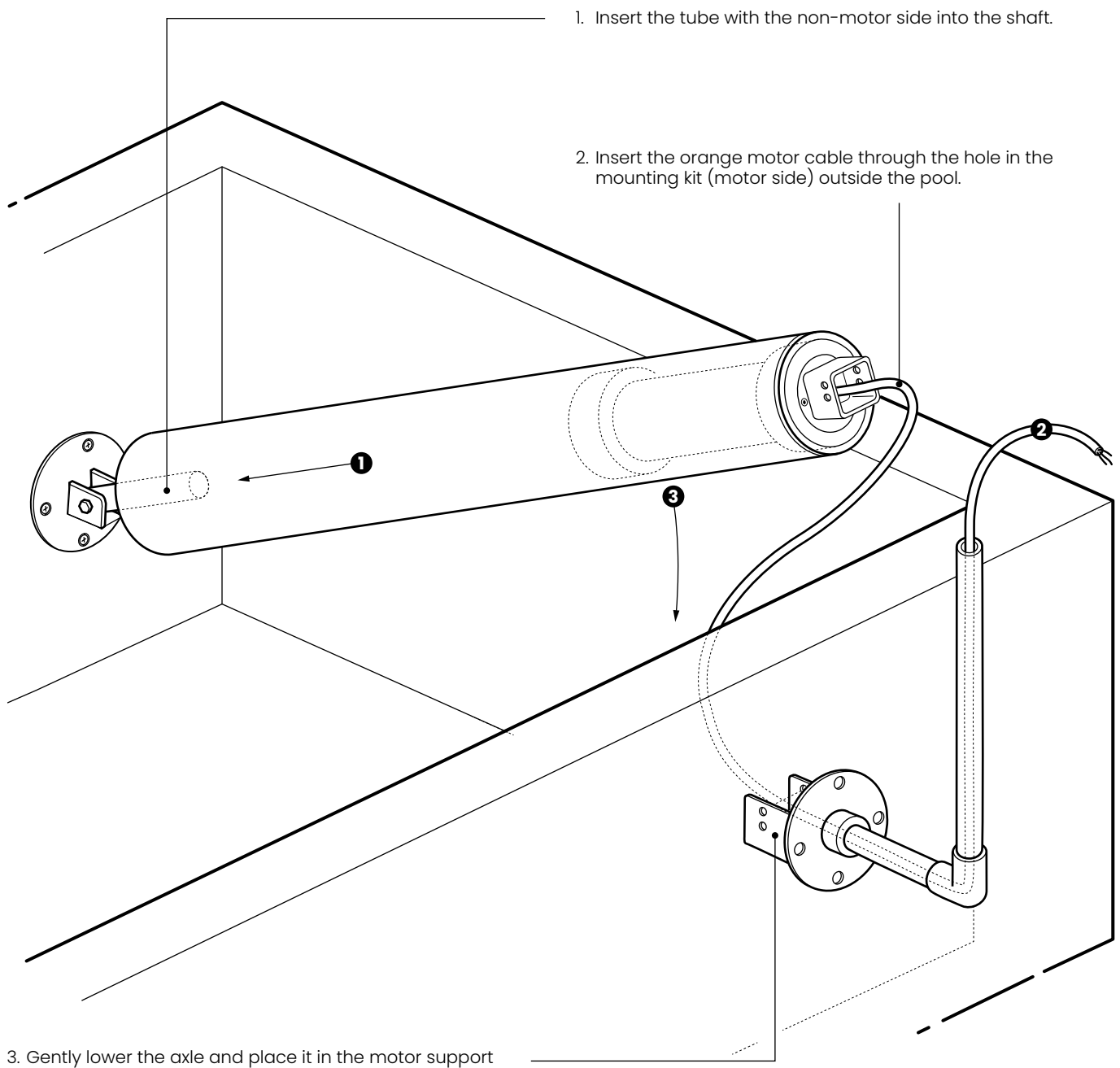
EN



Ideal water lock above water level

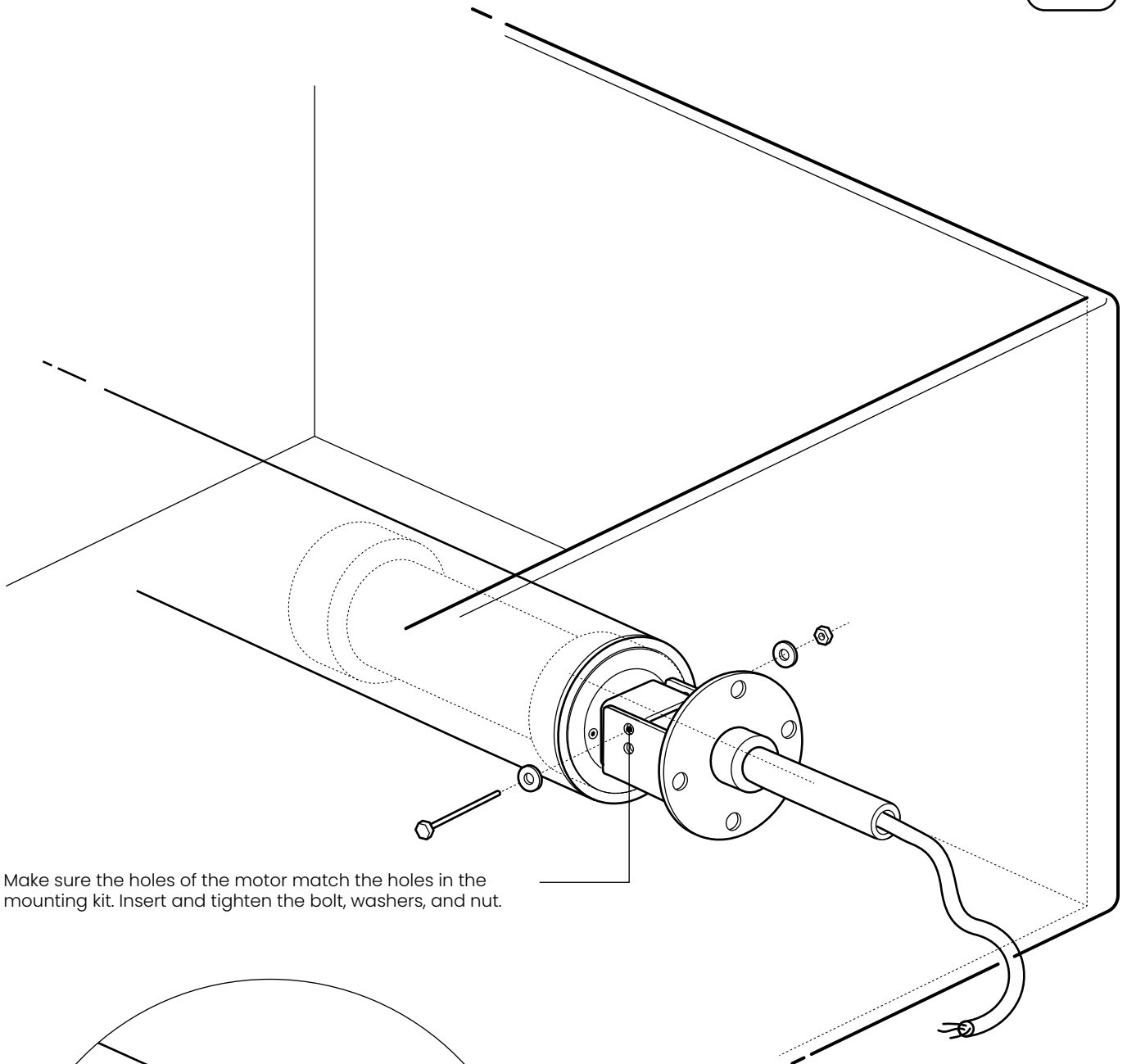


Ideal water lock above water level

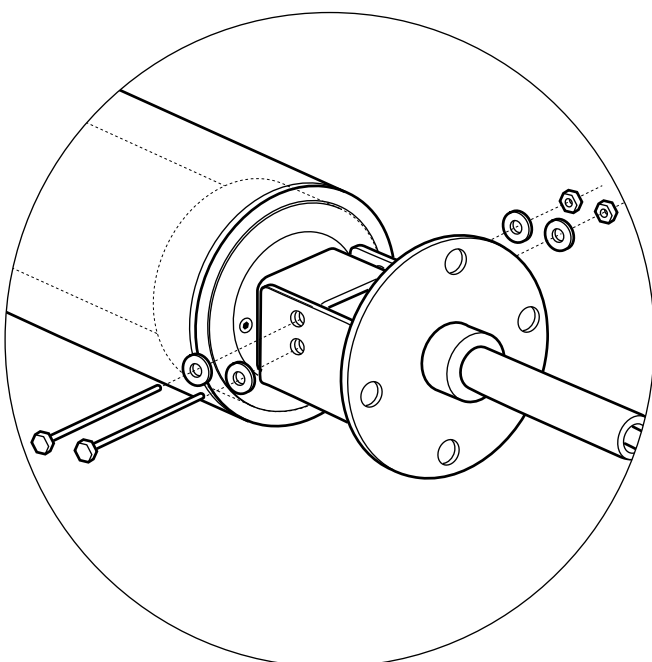


FIX THE ROLLER TUBE WITH MOTOR

EN



Make sure the holes of the motor match the holes in the mounting kit. Insert and tighten the bolt, washers, and nut.

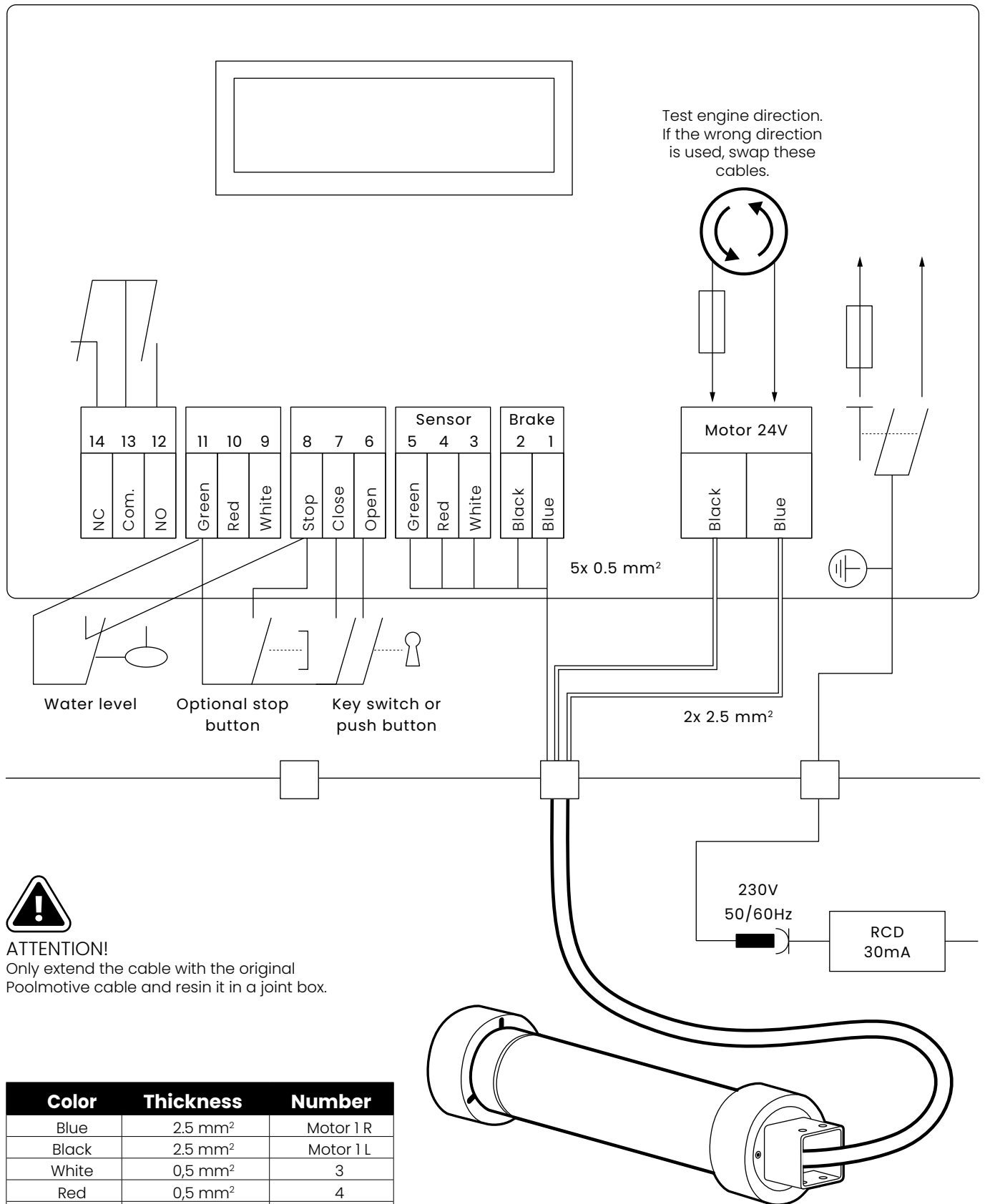


ATTENTION!
With the 450 NM and the 600 NM motor you have to use 2 bolts.

For the next step
go to page 23

CONNECTING CONTROL BOX

EN



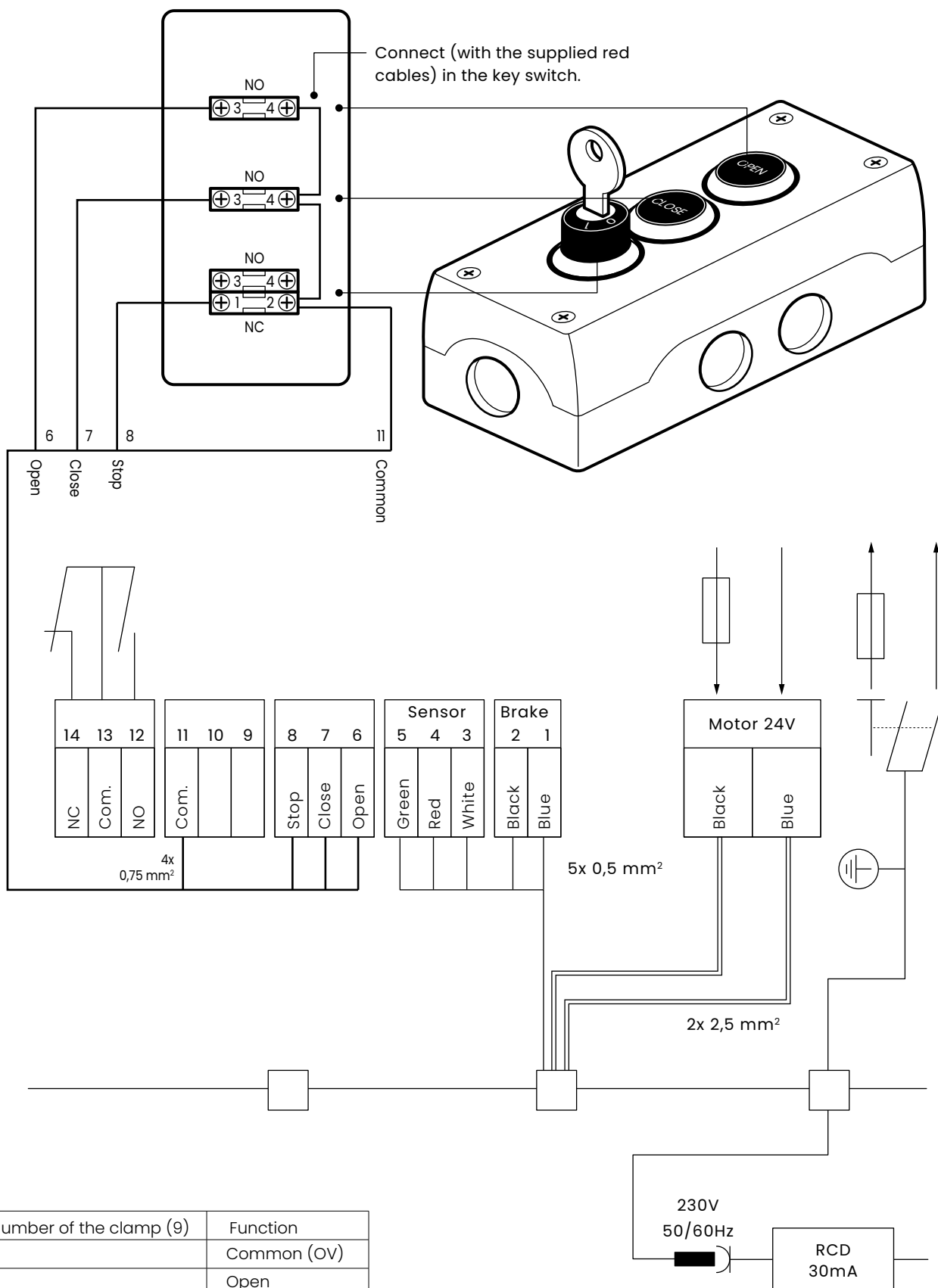
ATTENTION!
Only extend the cable with the original Poolmotive cable and resin it in a joint box.

Color	Thickness	Number
Blue	2.5 mm ²	Motor 1 R
Black	2.5 mm ²	Motor 1 L
White	0,5 mm ²	3
Red	0,5 mm ²	4
Green	0,5 mm ²	5
Blue	0,5 mm ²	1
Black	0,5 mm ²	2

Run the motor cable through and connect it according to the diagram above.

CONNECTING KEY SWITCH

EN



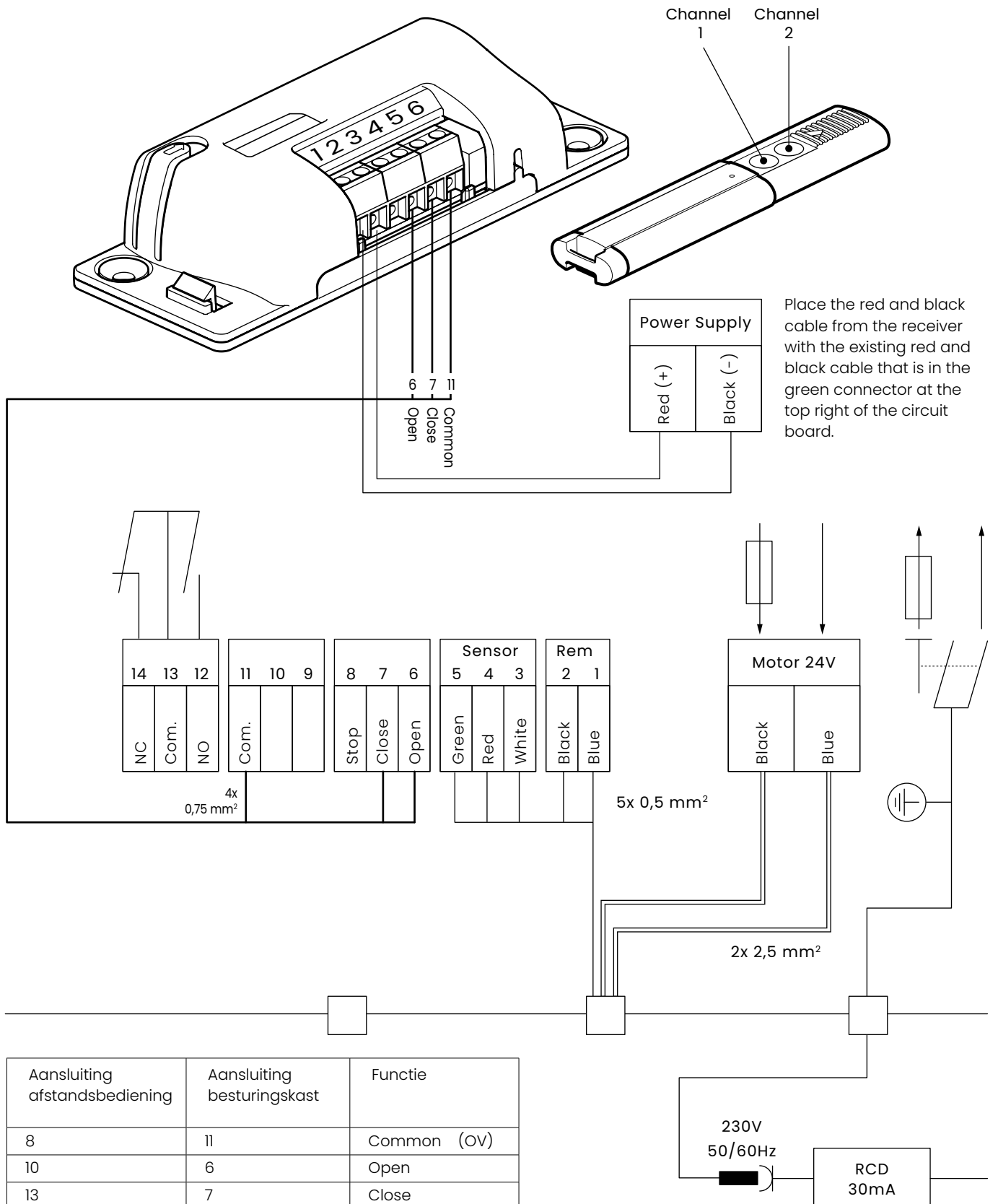
Number of the clamp (9)	Function
11	Common (OV)
6	Open
7	Close
8	Stop

CONNECTING 2 CHANNEL REMOTE CONTROL

EN

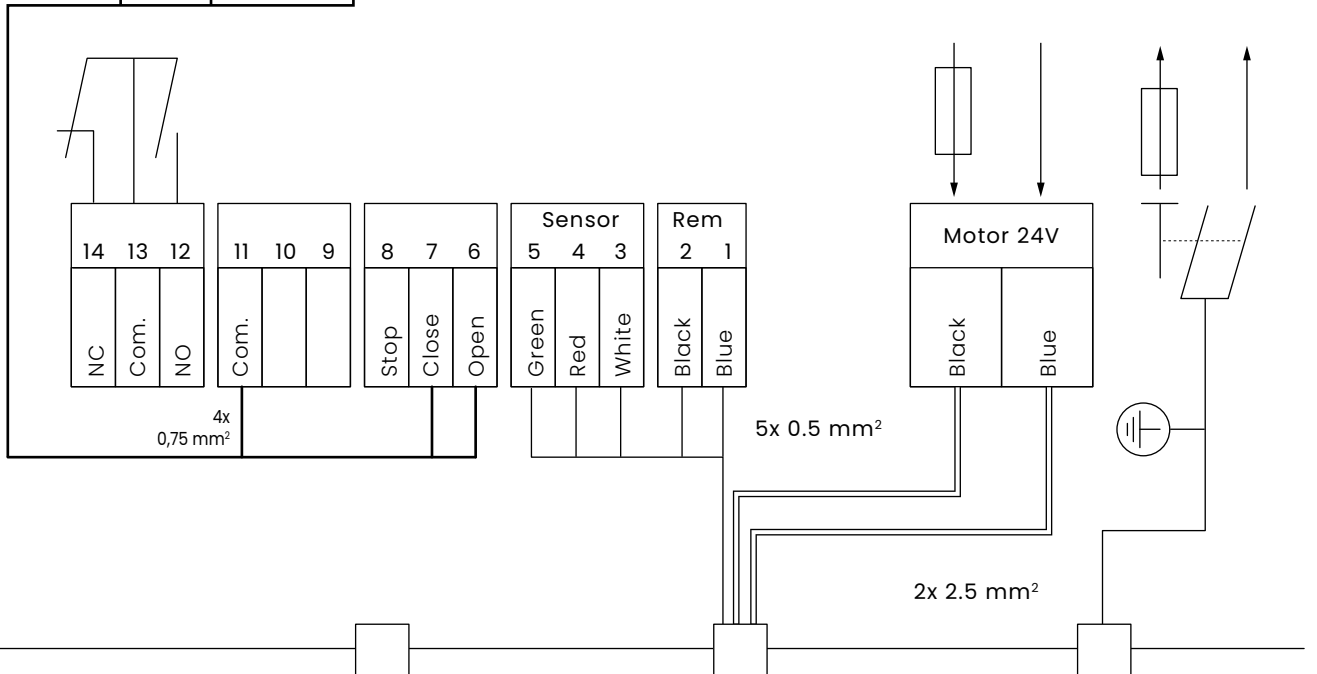
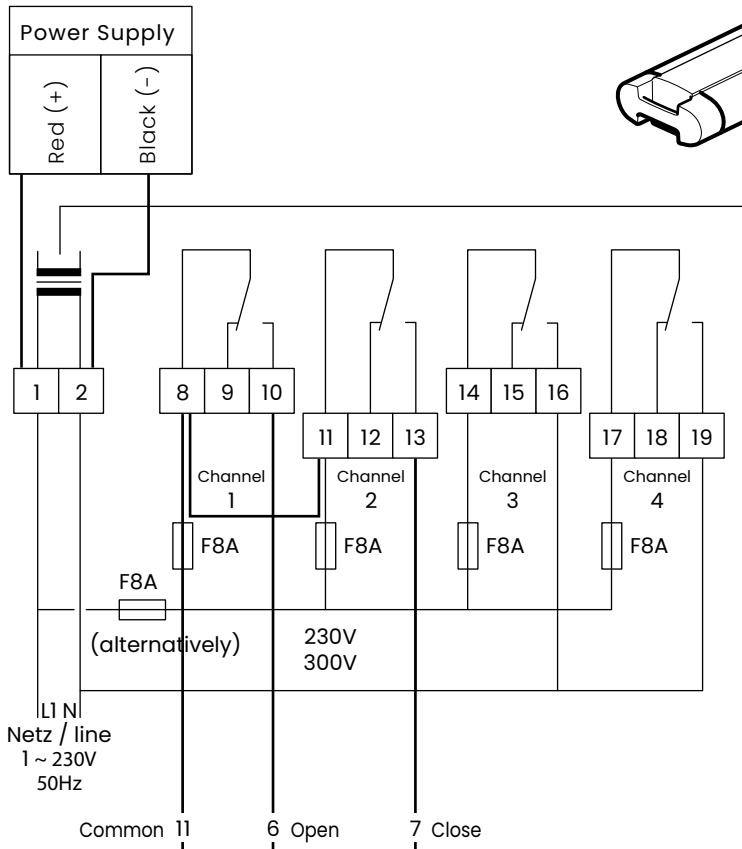
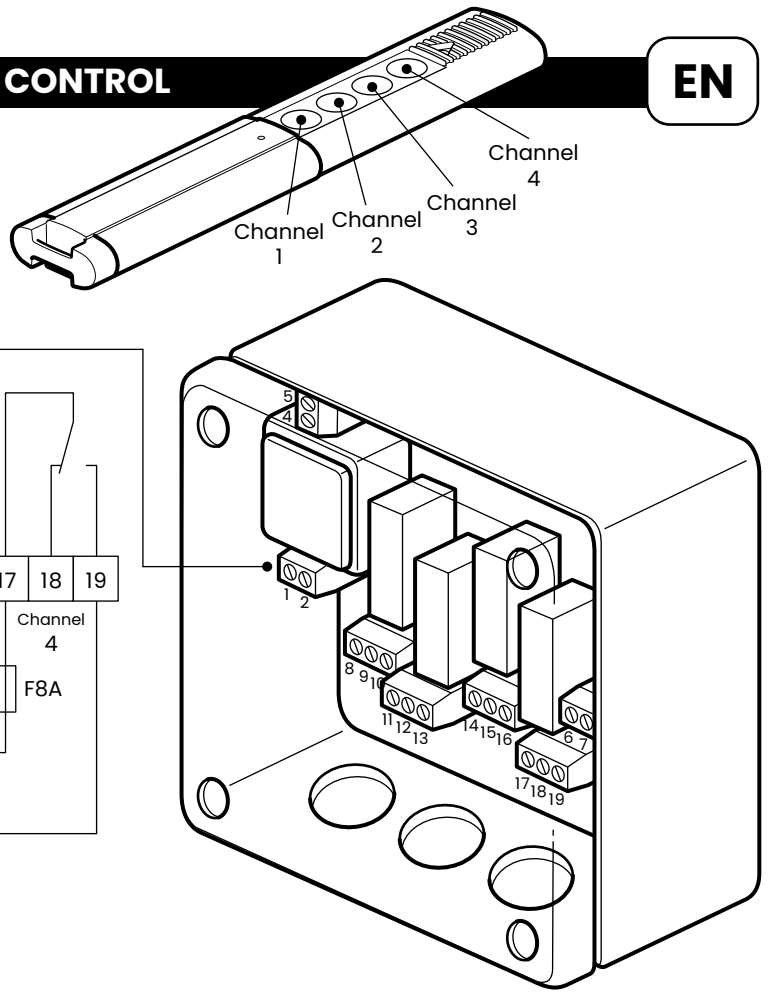
Mount the black receiver of the remote control at the top of the control box of the roller system.

Bring the 3 cables (blue, grey and purple) down behind the PCB. Keep the 2 cables (red and black) at the top.

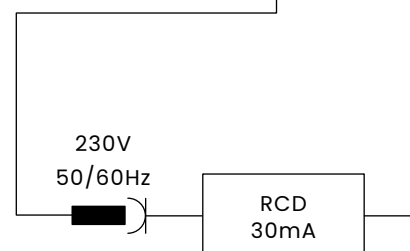


CONNECTING 4 CHANNEL REMOTE CONTROL

EN



Connecting remote control	Connection control box	Function
8	11	Common (OV)
10	6	Open
13	7	Close



PROGRAMMING END POSITIONS**EN****POSITION OPEN MEANS THAT THE WATER SURFACE OF THE POOL IS TOTALLY VISIBLE AND THE COVER IS COMPLETELY WOUND UP**

1. Press and hold the red programming button for three seconds until "Programming mode" is shown on the display.
2. Press the Open button. The red LED next to the OPEN button lights up.
 - a. The red LED next to the red key flashes quickly.
3. When the cover reaches the OPEN position, stop the engine by pressing the Close button.
 - a. The desired position can be corrected with the buttons in both directions.
- b. A delay of 4 seconds must be taken into account when switching.
4. Switch off the voltage with the main switch on the controller. The end position OPEN is programmed.

POSITION PROGRAMMING CLOSED

Position CLOSED means that the water surface of the pool is covered and the cover is completely on the surface of the water.

1. Switch on the main switch (1). "Done" will appear on the display.
2. Press and hold the red programming button for three seconds until "Programming mode" appears on the display.
 - a. The red LED next to the red key flashes quickly.
3. Press the Close button. The red LED next to the CLOSE button lights up.
4. When the cover reaches the CLOSED position, stop the engine by pressing the Open button.
 - a. The desired position can be corrected with the buttons in both directions.
 - b. A delay of 4 seconds must be taken into account when switching.
5. Press the red programming button once.
 - a. "Position 1" appears on the display, the LED next to the button (5) flashes slowly.
6. Press the red programming button (5) again.
 - a. "Position 2" appears on the display, the LED next to the button (5) flashes faster.
7. Press the red programming button again.
 - a. The desired position has been saved.
 - b. The message "saved" on the display disappears and the LED next to the red programming button (5) goes out.

ERROR MESSAGES

EN

An error is indicated when the LED's next to the programming buttons.
The display will show an error message in accordance with the following table.

IMPORTANT:

In the event of any malfunction in the system, the following must first be checked:

1. Is the plug-in fuse in the control box in order (measuring)?
2. Is there a key switch?
 - a. Yes = disconnect it from the control box before searching for the fault
 - b. No = immediately look for the fault
3. Is the motor cable extended?
 - a. Yes = remove the connection and connect the control box directly to the motor cable
 - b. No = immediately look for the fault

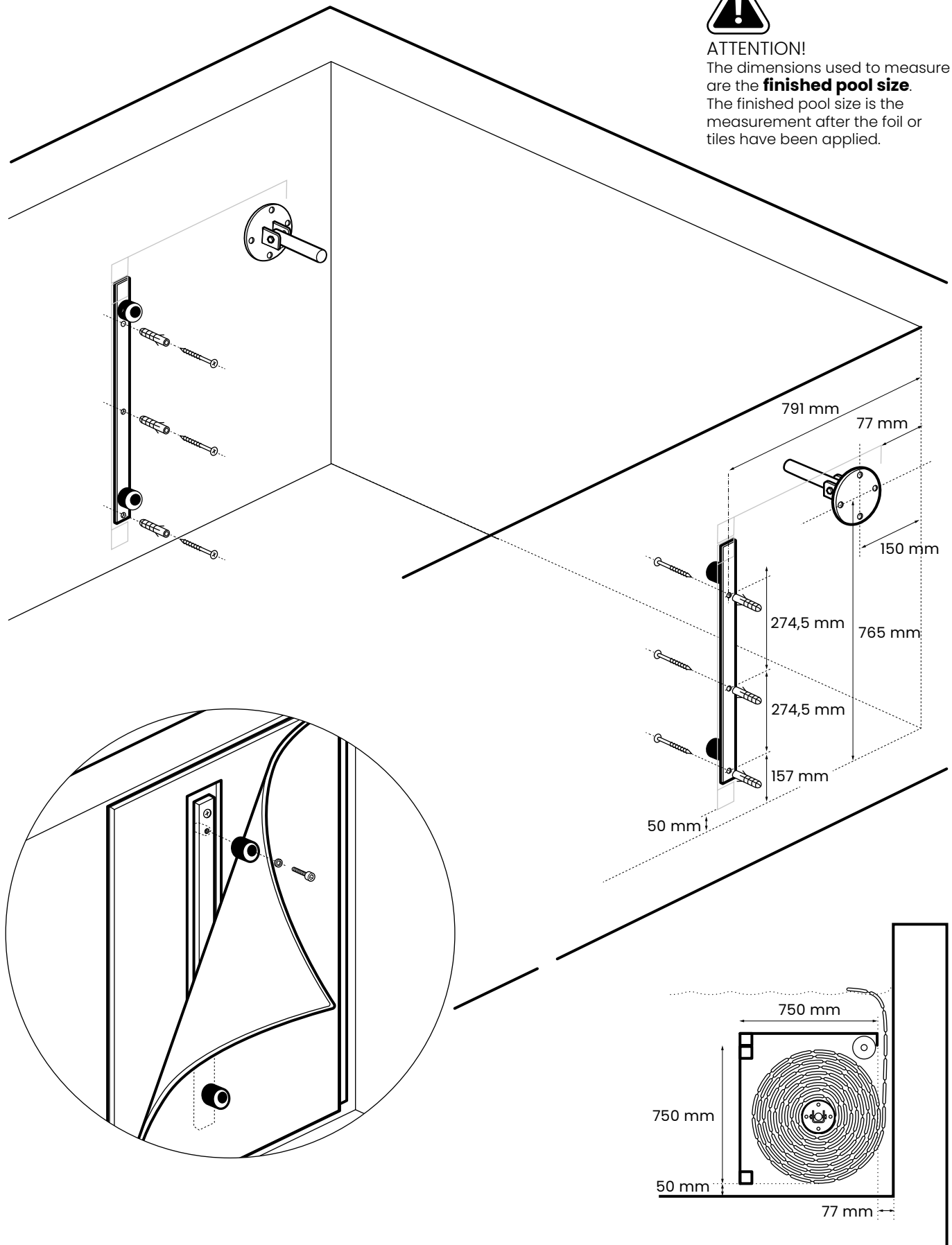
Led foutcode	Storing op het display	Mogelijke oorzaak	Oplossing
All 3 LED's are flashing.	Key switch block.	Key switch is in the OPEN or CLOSE position.	Turn the key switch to the 0 position. The word "ready" appears in the display.
All 3 LED's are flashing.	Sensor error.	Decoder not functioning.	Have the unit inspected by a professional technician. The drive runs out of control in this instance.
All 3 LED's are flashing.	Maximum current.	Motor is blocked or is rough-running. Items in pool.	Remove the items. Have the unit inspected by a professional technician.
None.	None.	The unit only moves in one direction.	Connect the key switch properly. Connect the cable from terminal 6 to terminal 11, or from terminal 7 to terminal 11.
LED for voltage display is not lit.	No display.	Shock-proof plug has no power. Residual current circuit breaker was activated. Power switch (I) not turned on mains fuse () on the power supply board defective.	Check house fuse, have unit inspected by a professional technician. Turn on power switch, check fuse / replace if needed.

PRE-ASSEMBLY BENCH COVER PANEL 750 X 750 MM

EN

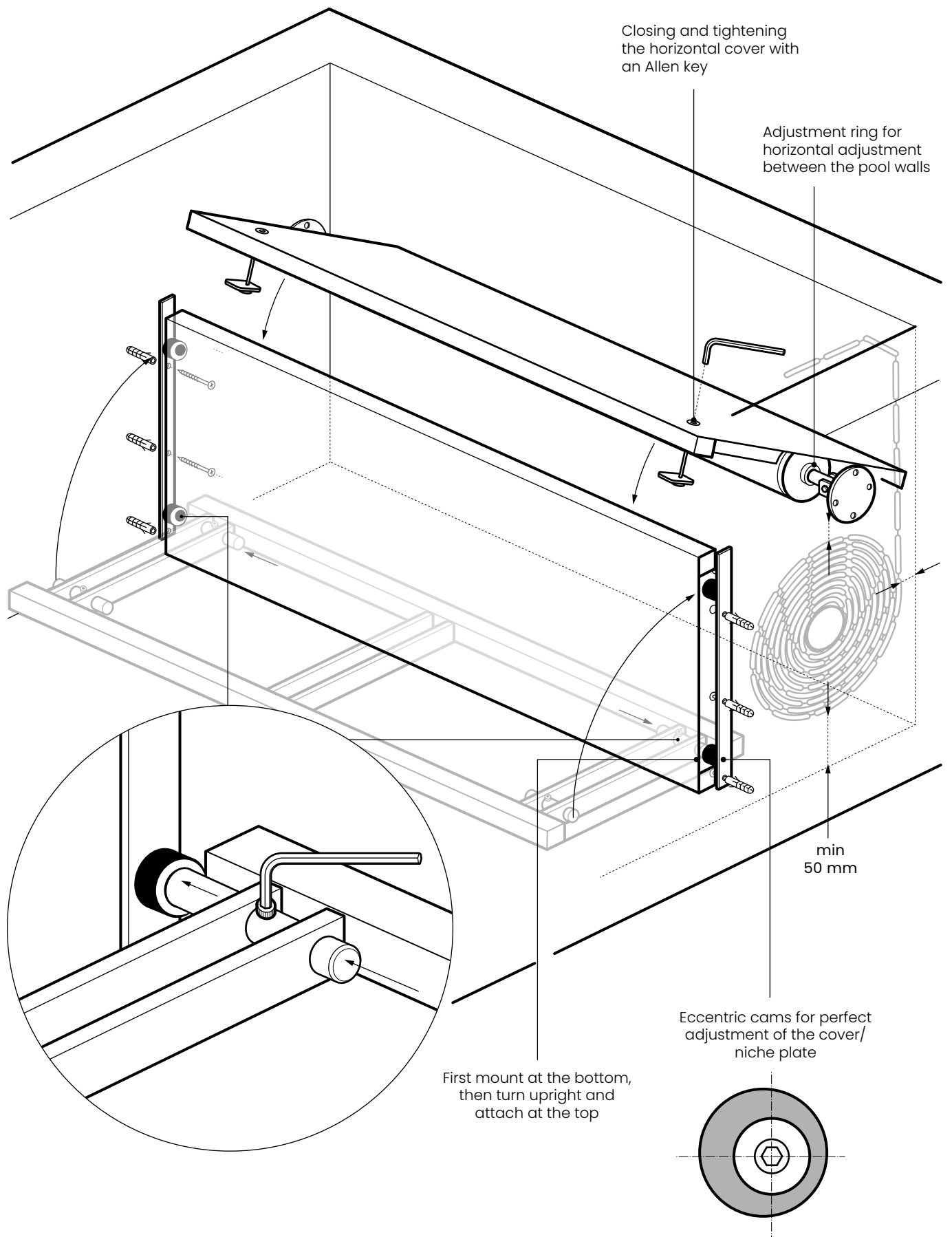


ATTENTION!
The dimensions used to measure are the **finished pool size**.
The finished pool size is the measurement after the foil or tiles have been applied.



ASSEMBLY BENCH COVER PANEL

EN

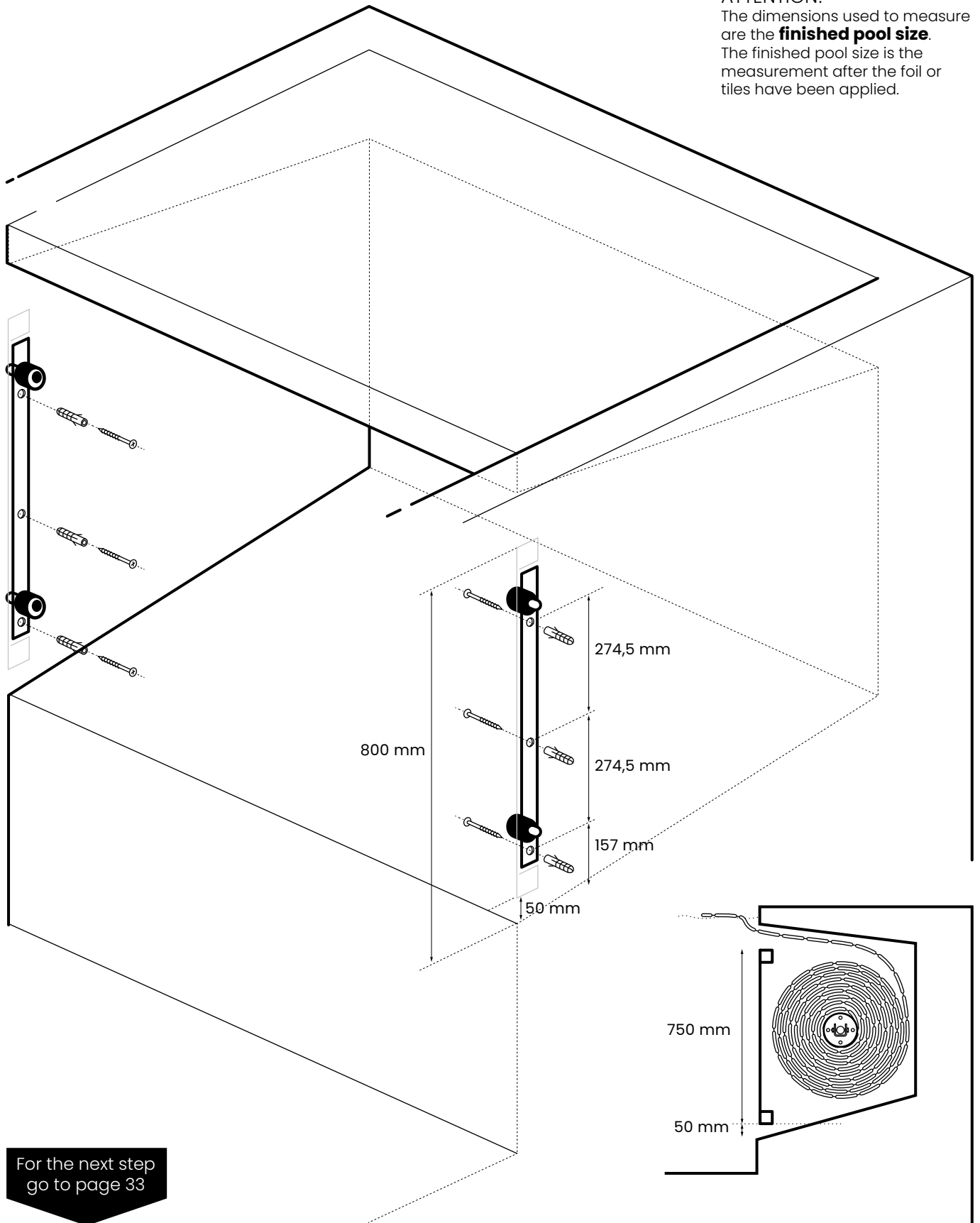


PRE-ASSEMBLY VERTICAL CAVE PANEL 750 MM

EN



ATTENTION!
 The dimensions used to measure are the **finished pool size**.
 The finished pool size is the measurement after the foil or tiles have been applied.



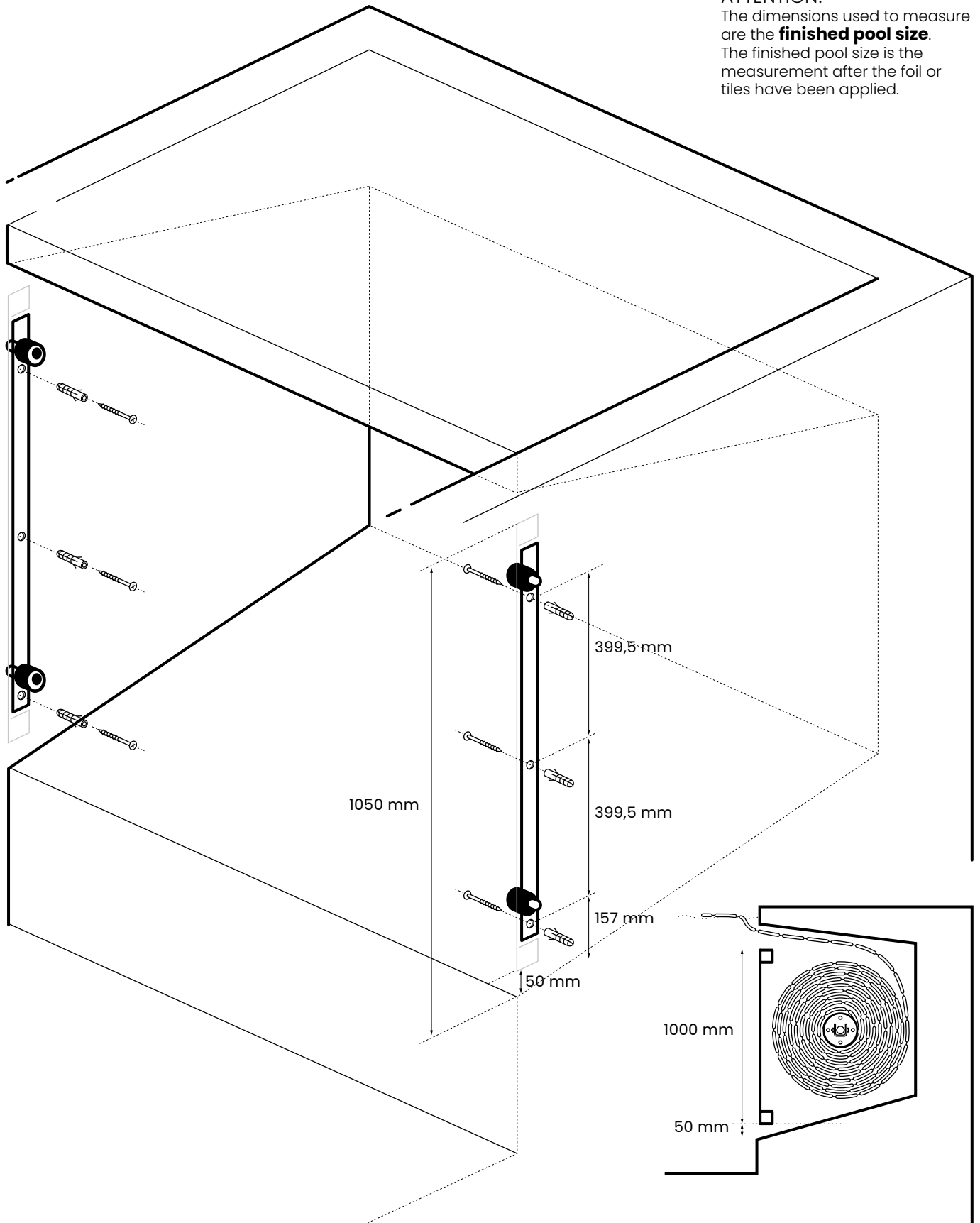
For the next step
 go to page 33

PRE-ASSEMBLY VERTICAL CAVE PANEL 1000 MM

EN

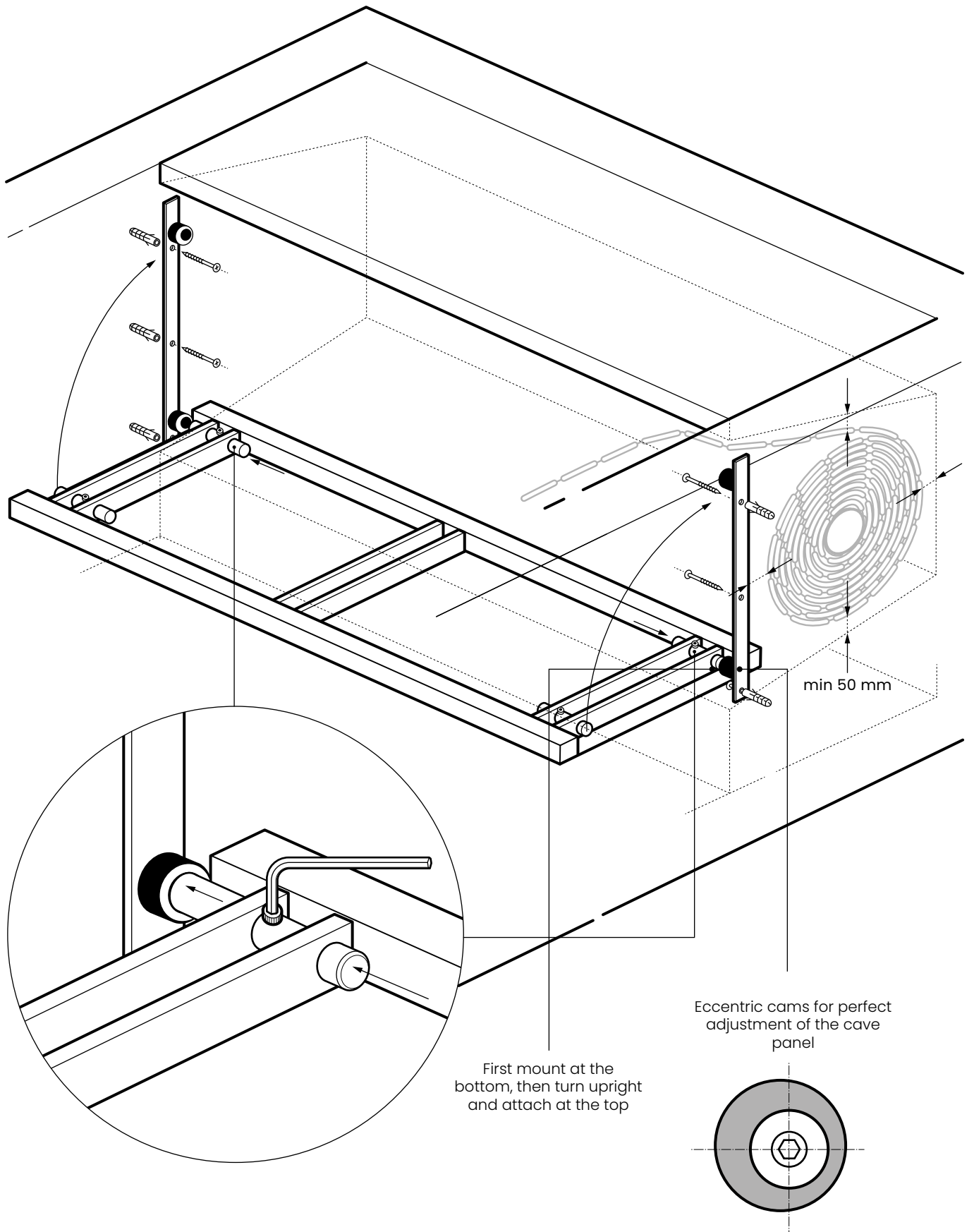


ATTENTION!
 The dimensions used to measure are the **finished pool size**.
 The finished pool size is the measurement after the foil or tiles have been applied.



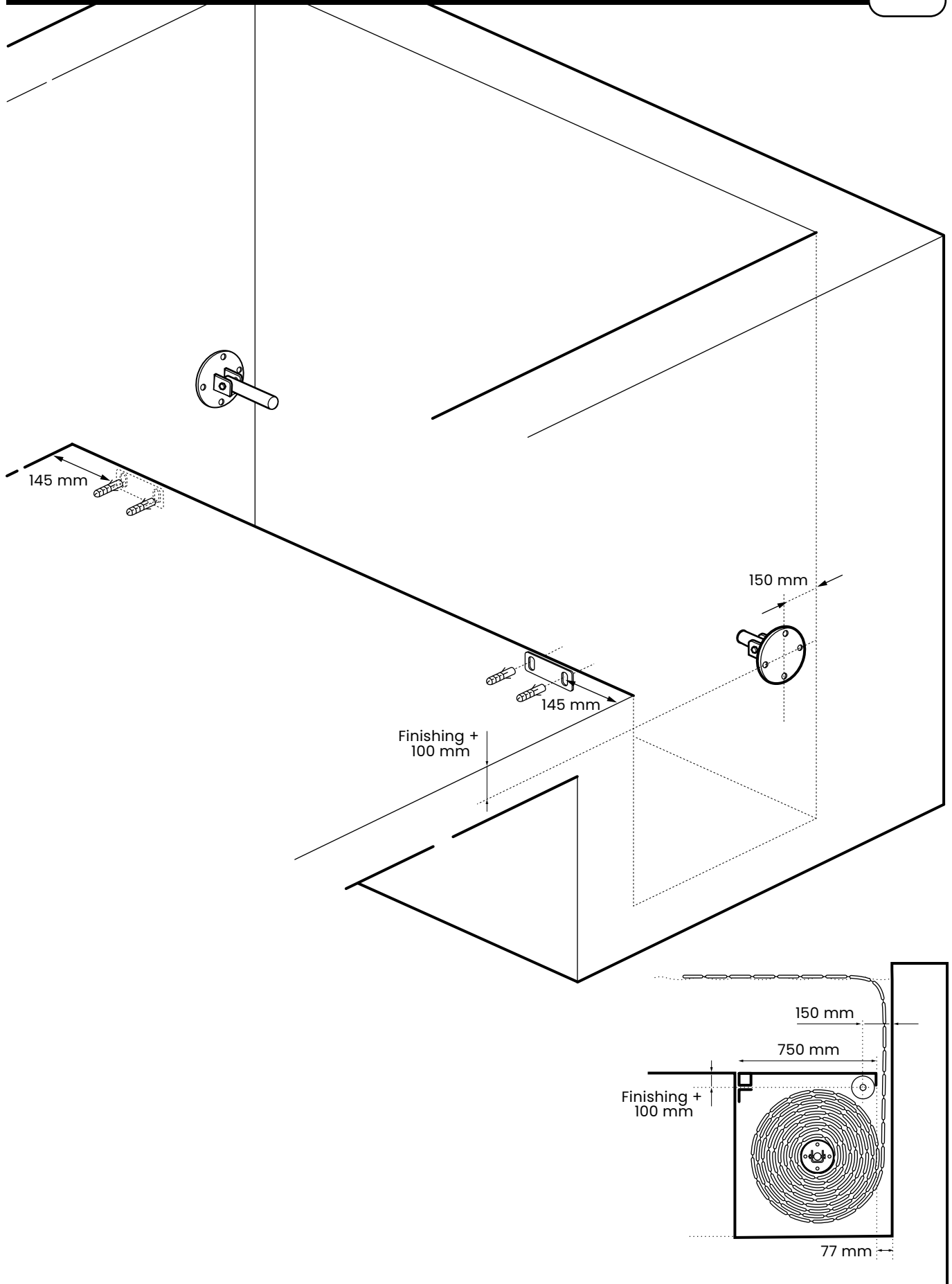
ASSEMBLY VERTICAL CAVE PANEL 750/1000 MM

EN



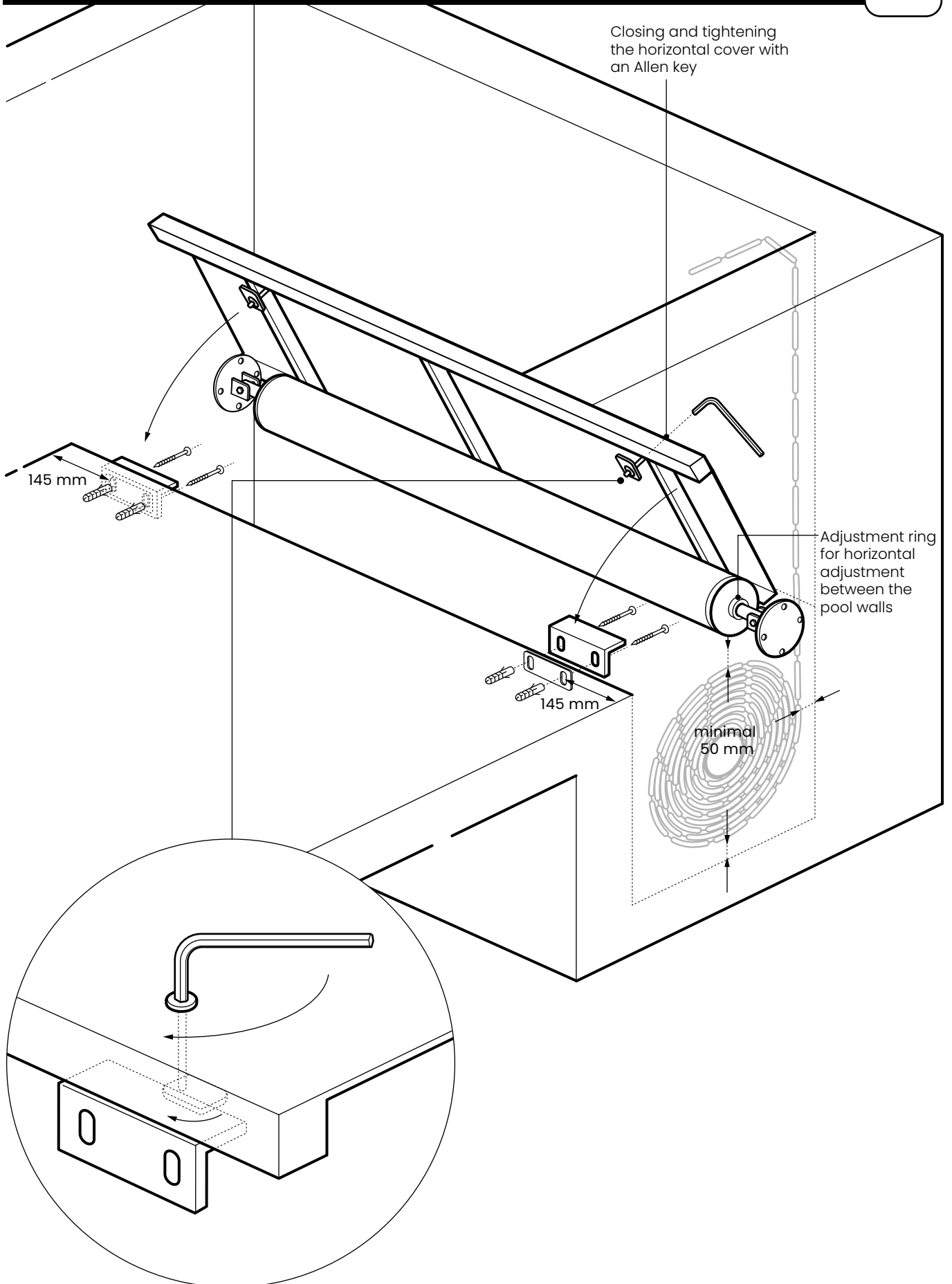
PRE-ASSEMBLY HORIZONTAL PANEL

EN



ASSEMBLY HORIZONTAL PANEL

EN





Poolmotive

Korenmijt 1
5741PP, Beek en Donk
Netherlands
+31 (0)85 076 88 85
info@poolmotive.com
www.poolmotive.com