

EN

INSTALLATION MANUAL

Toproller M, L, XL



YOUR SKILLS & OUR TOOLS

Poolmotive® strives to strengthen the swimming pool industry. By standing together and supporting people in the market, and by improving products.

Our reason for innovating is to make things better, to improve on what came before. We work together with swimming pool builders, adapting products to needs and learning and growing by listening to our clients.

As a manufacturer and innovator, Poolmotive knows what it means to build a really good and sustainable swimming pool. And what is needed to maintain it smartly and effectively. It requires knowledge, deep professional knowledge and sometimes that can be underestimated, but not by us.

It is our responsibility to support you as a professional in this beautiful industry. That starts with understanding and communication, by thinking smartly together about products, to make them better. A well-thought-out installation is the start of a better product. Our innovative products should help you deliver a better, more sustainable and more beautiful swimming pool.



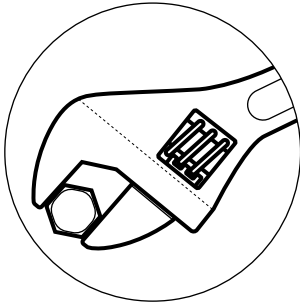
CONTENTS

EN

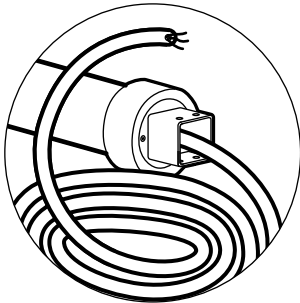
TIPS & TRICS		3
TOPROLLER (M)	<ul style="list-style-type: none"> - Measuring the top roller - Pre-assembly of base plates - Base plate Assembly - Post Assembly - Installing the Roller Tube with Motor - Screw on roller tube 	<p>4</p> <p>5</p> <p>6</p> <p>7</p> <p>8</p> <p>9</p>
TOPROLLER (L)	<ul style="list-style-type: none"> - Measuring the top roller - Pre-assembly of base plates - Base plate Assembly - Post Assembly - Installing the Roller Tube with Motor - Screw on roller tube 	<p>10</p> <p>11</p> <p>12</p> <p>13</p> <p>14</p> <p>15</p>
TOPROLLER (XL)	<ul style="list-style-type: none"> - Measuring the top roller - Pre-assembly of base plates - Base plate Assembly - Post Assembly - Installing the Roller Tube with Motor - Screw on roller tube 	<p>16</p> <p>17</p> <p>18</p> <p>19</p> <p>20</p> <p>21</p>
CONNECTING CONTROL BOX		22
START-UP		23
TESTING THE MOTOR'S ROTATION DIRECTION		24
INFORMATION SHOWN ON DISPLAY		25
ERROR MESSAGES		26

TIPS & TRICS**EN**

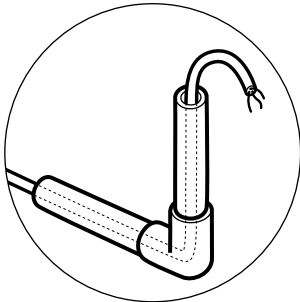
USE COPPER GREASE ON ALL THREADED RODS



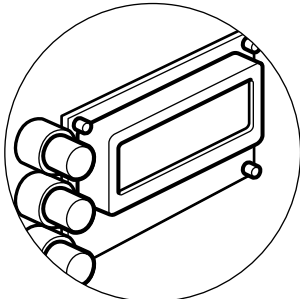
USE TITANIUM TOOLS WHICH ARE ONLY USED FOR STAINLESS STEEL



EXTENDING THE MOTOR CABLE ONLY WITH THE ORIGINAL CABLE IN A JOINT BOX THAT IS RESINED



TRANSFER THE MOTOR CABLE THROUGH A PVC PIPE TO THE TECHNICAL ROOM

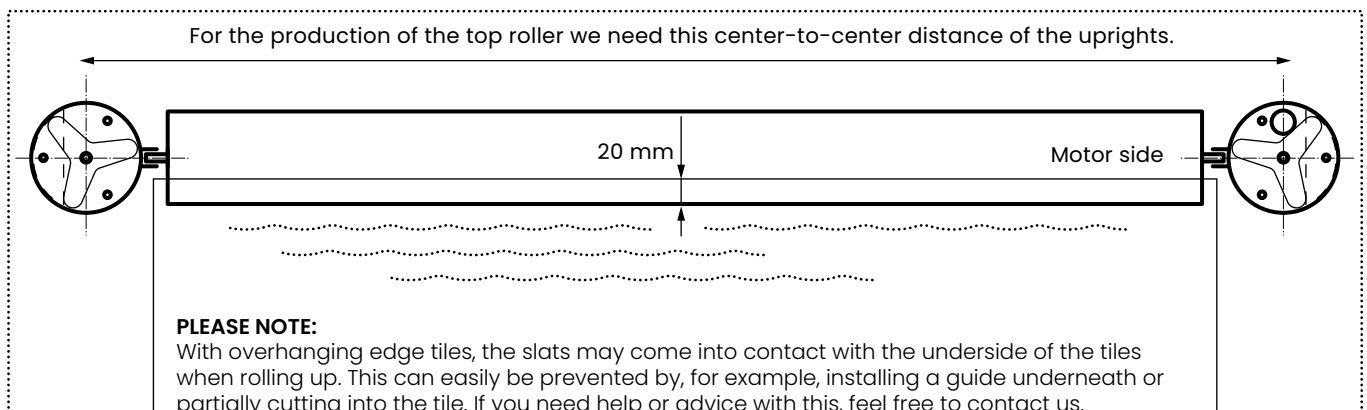
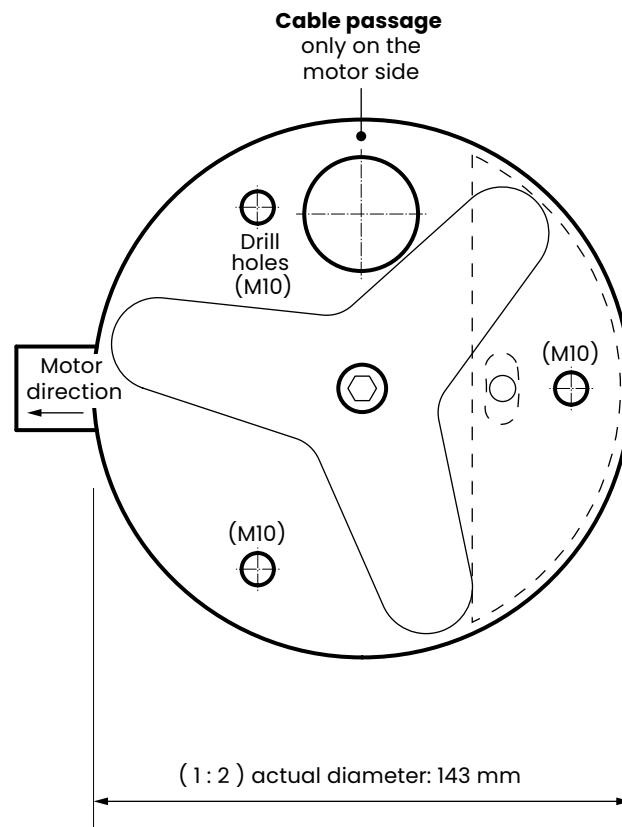
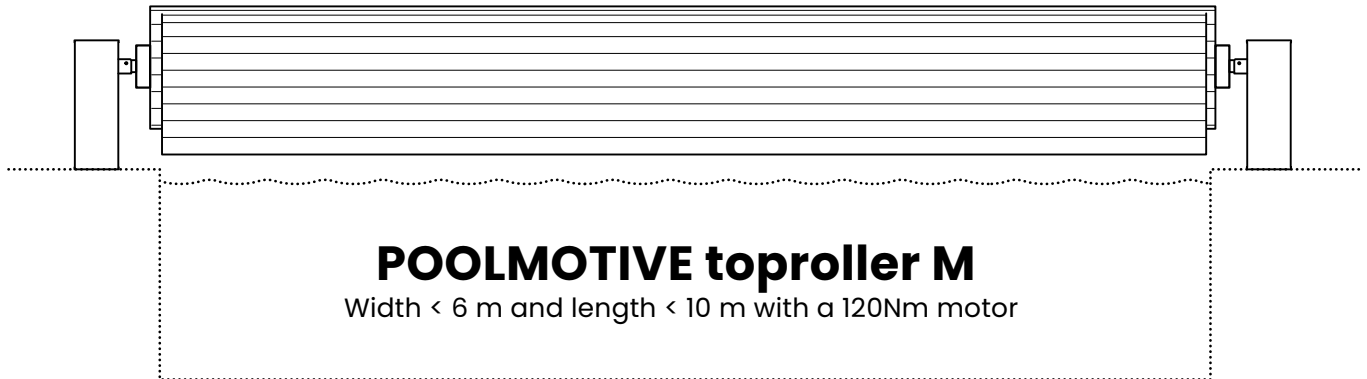


NOTE THE NUMBER OF PULSES ON THE DISPLAY OF THE CONTROL BOX IN BOTH THE OPEN AND CLOSED POSITION

M

MEASURING THE TOP ROLLER

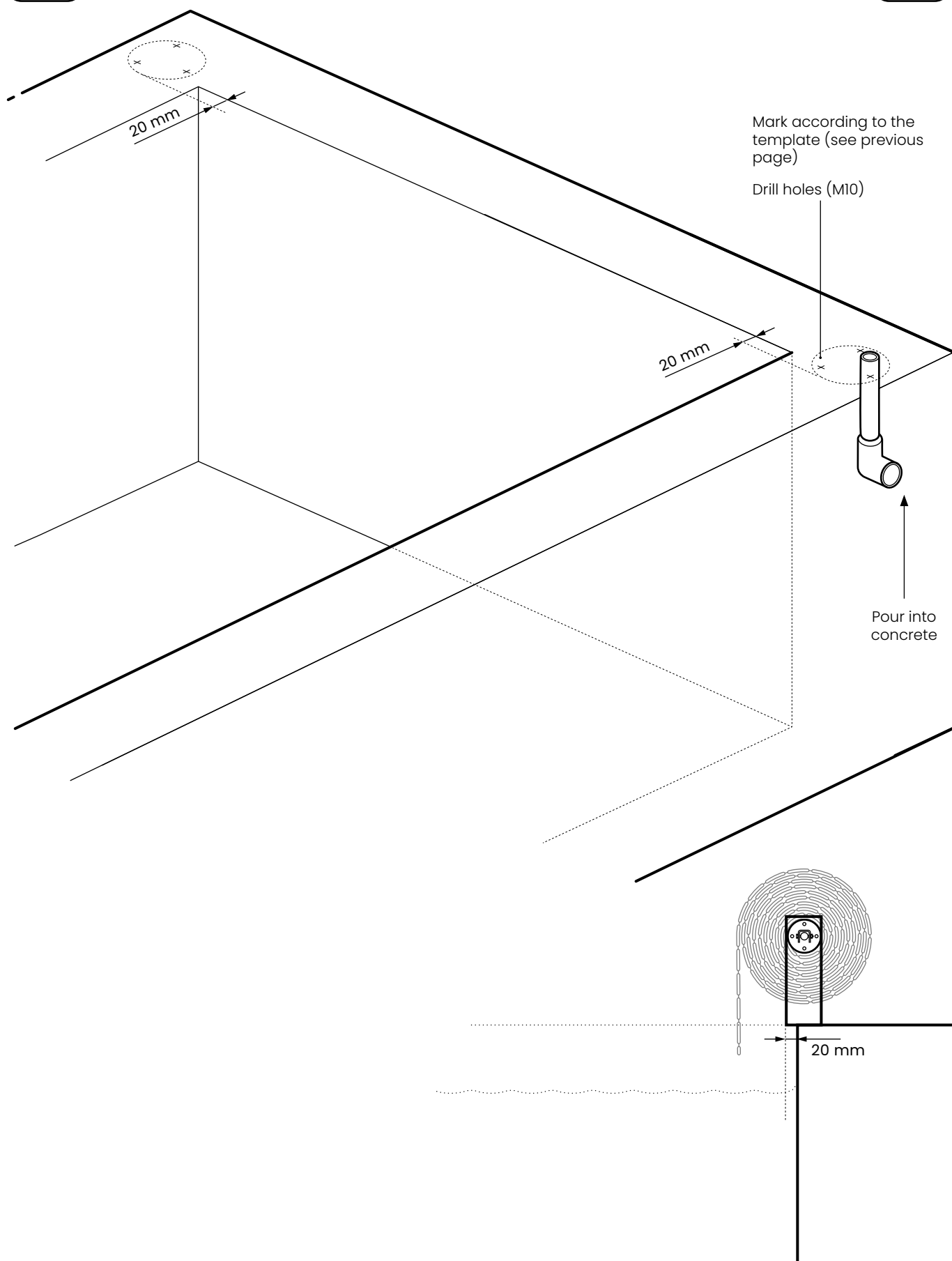
EN



M

PRE-ASSEMBLY OF BASE PLATES

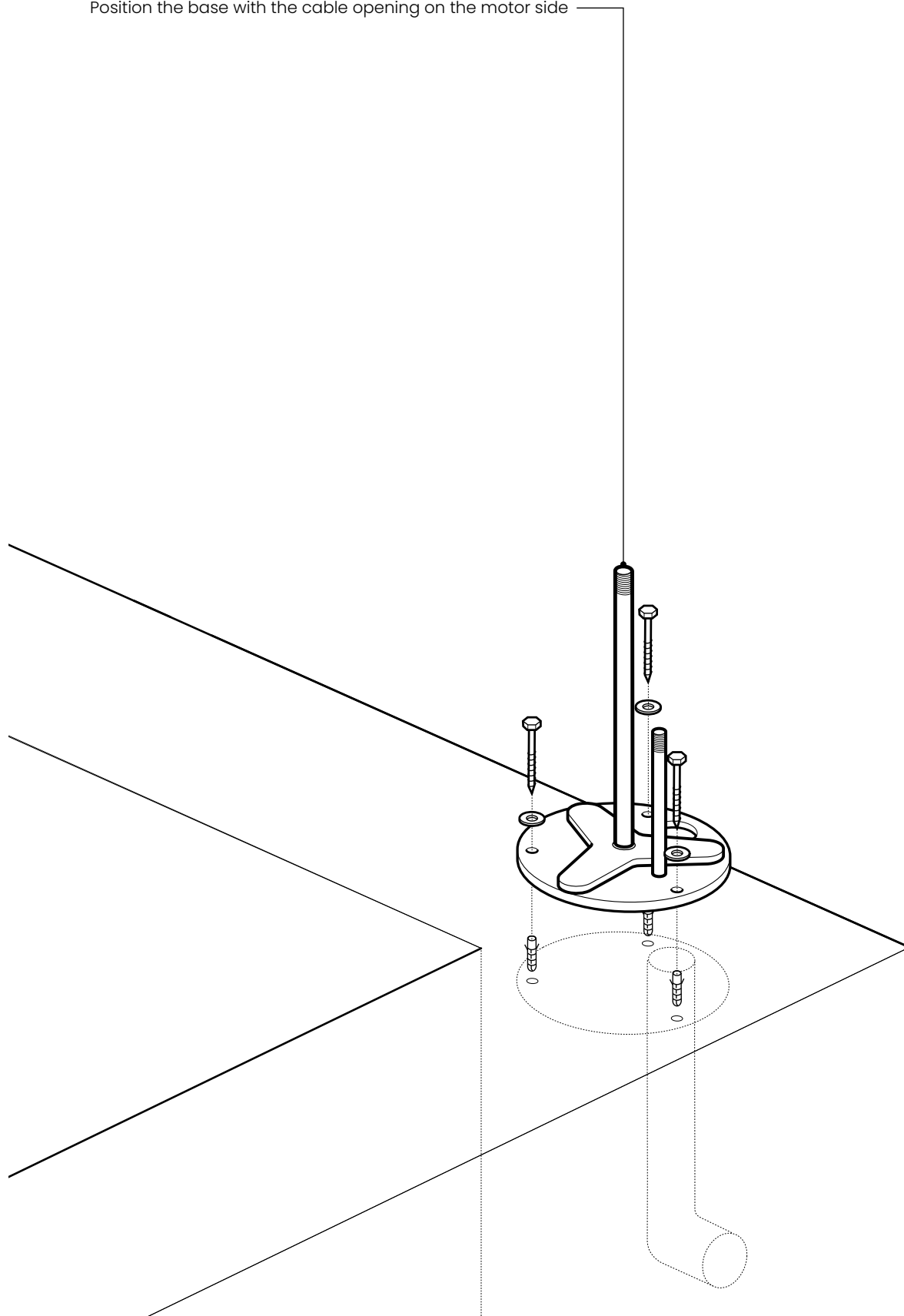
EN



M BASE PLATE ASSEMBLY

EN

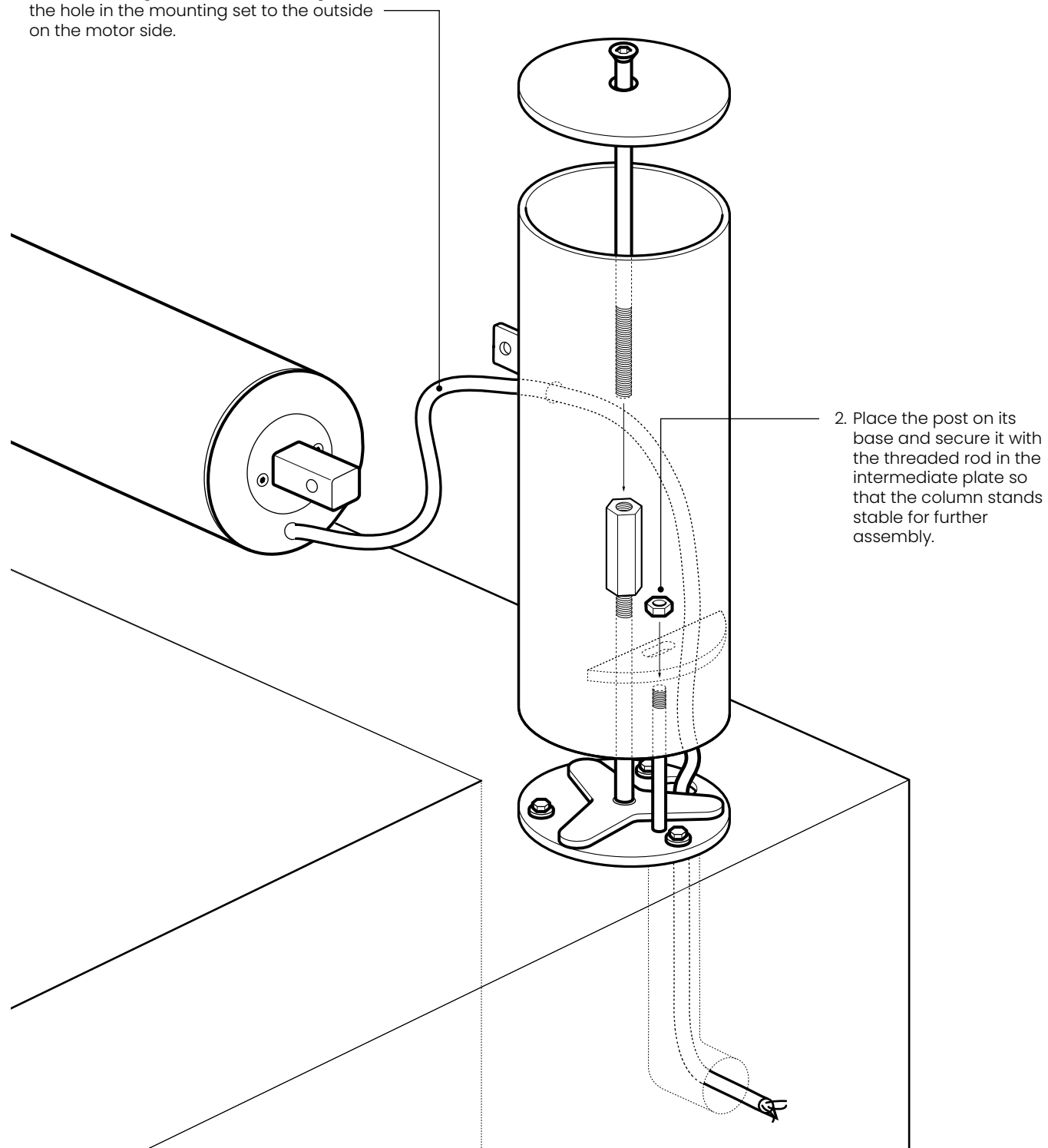
Position the base with the cable opening on the motor side



M POST ASSEMBLY

EN

1. Feed the orange motor cable through the hole in the mounting set to the outside on the motor side.



M

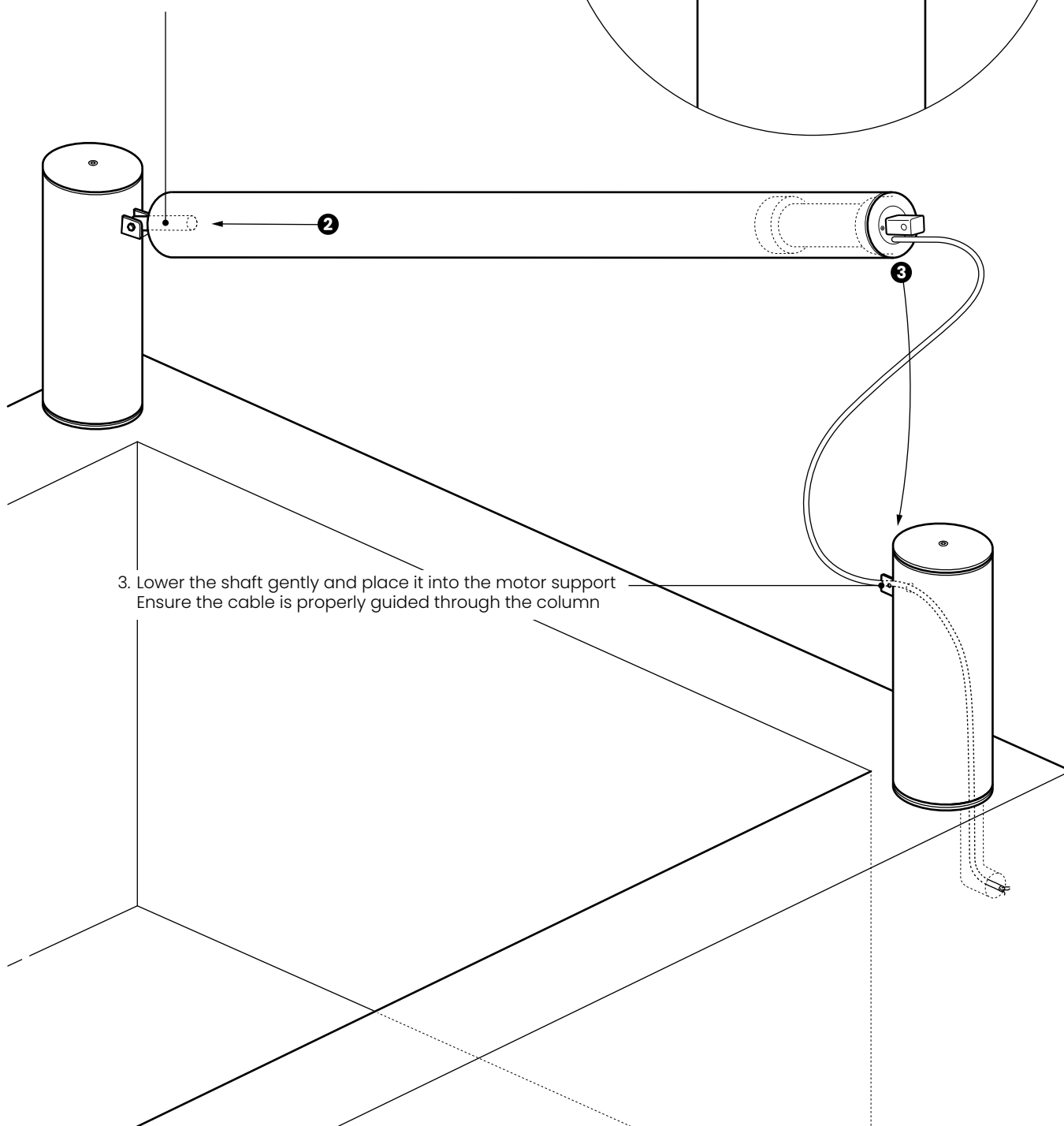
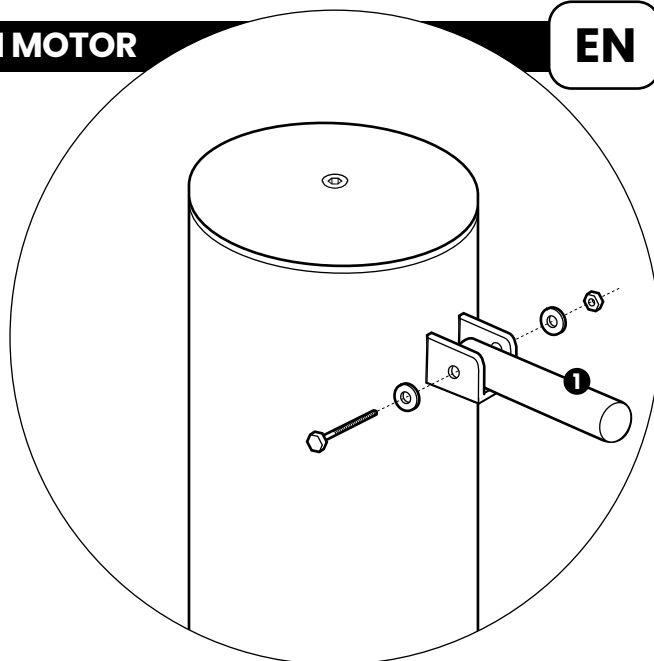
INSTALLING THE ROLLER TUBE WITH MOTOR

EN

1. Mount the shaft on the non-motor side using the corresponding nuts and bolt

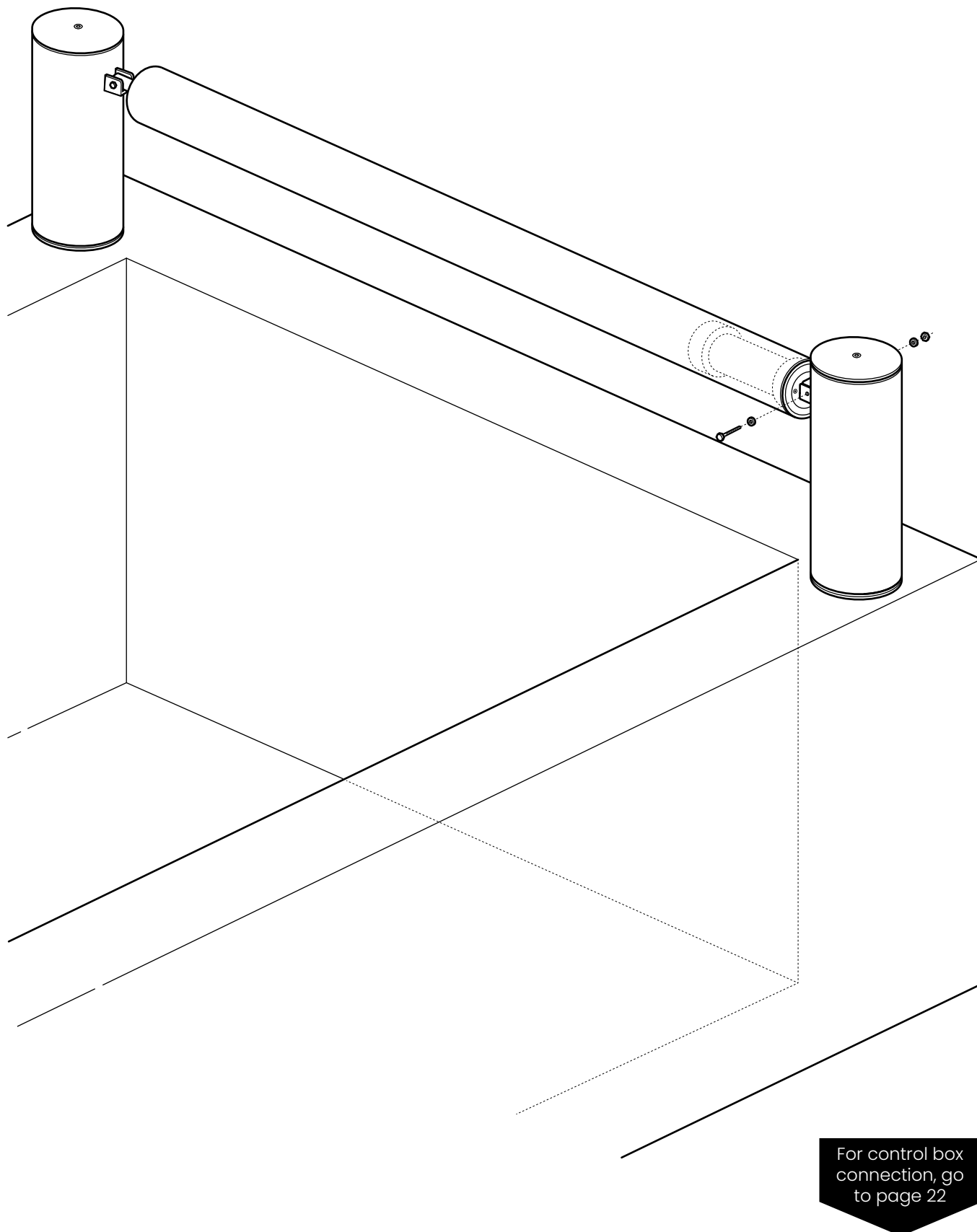
2. Insert the tube into the shaft from the non-motor side

3. Lower the shaft gently and place it into the motor support
Ensure the cable is properly guided through the column



M SCREW ON ROLLER TUBE

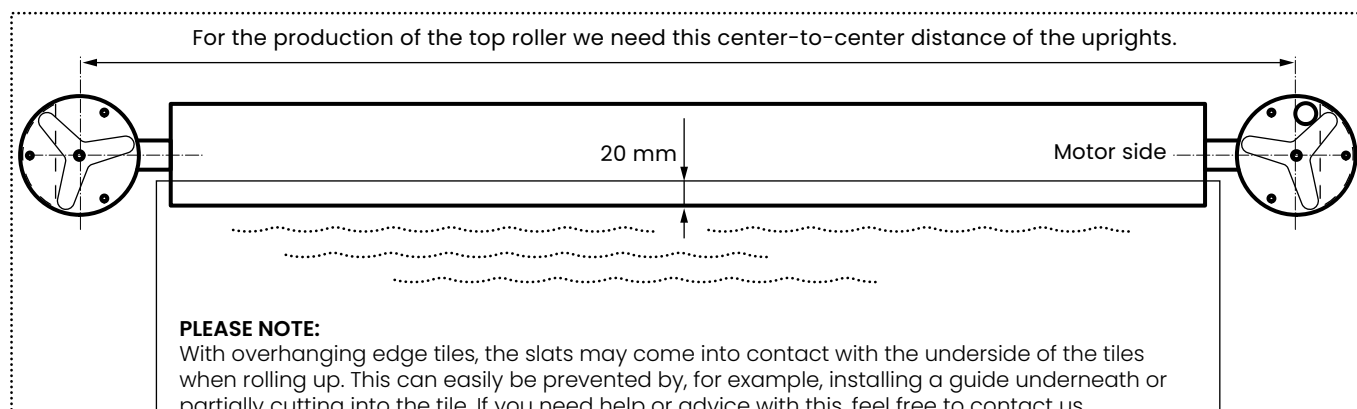
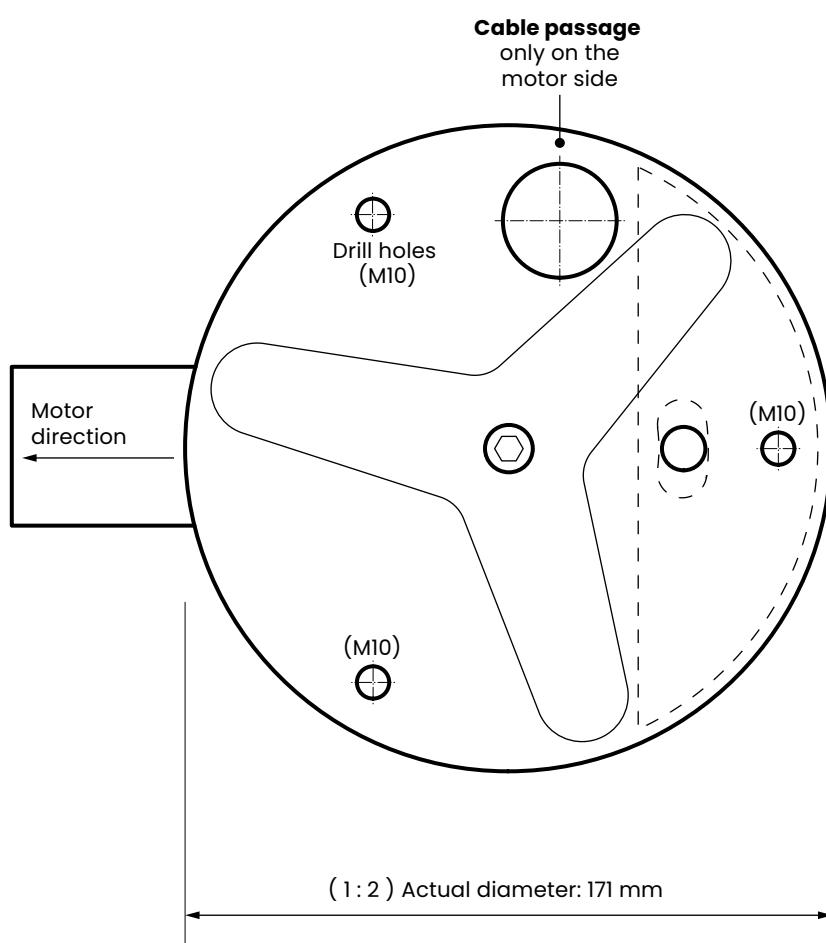
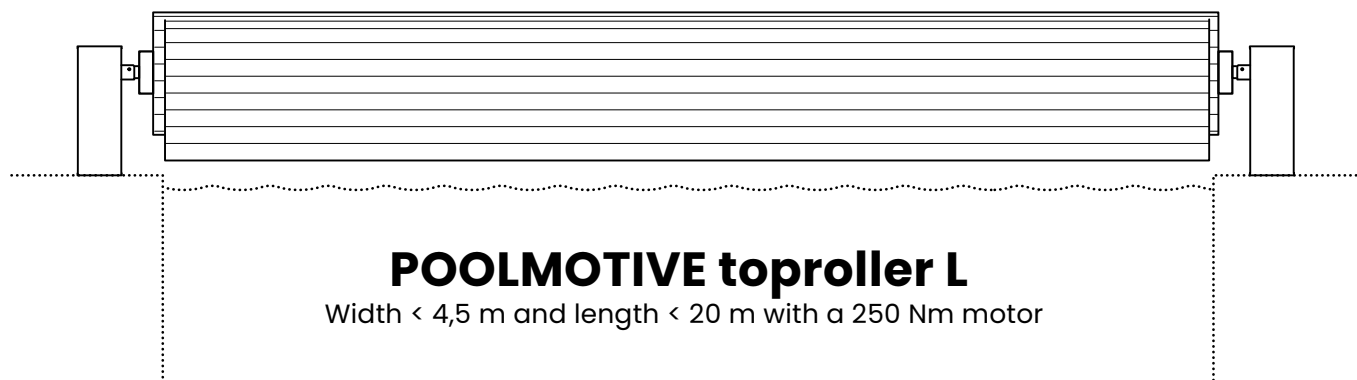
EN



L

MEASURING THE TOP ROLLER

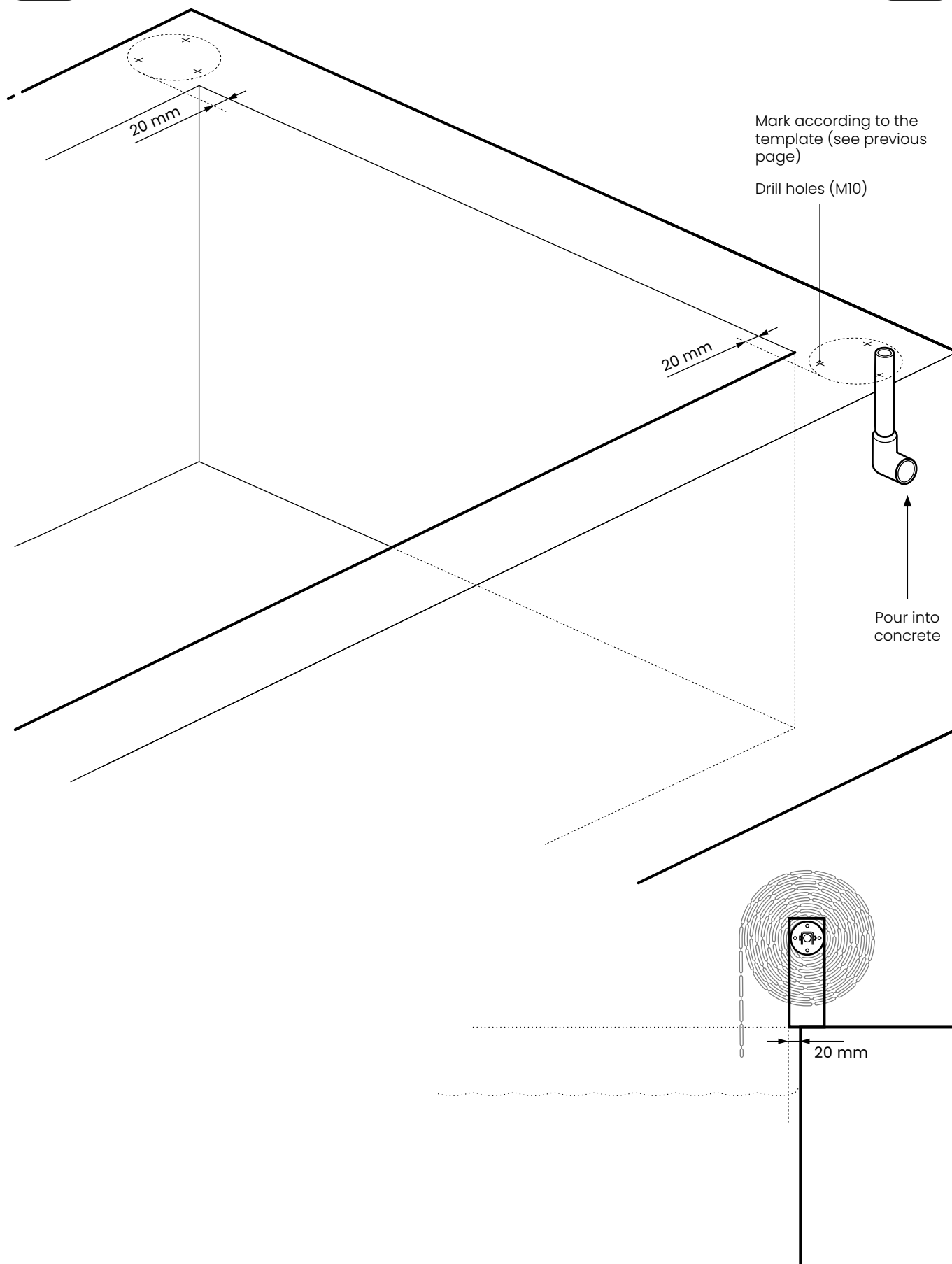
EN



L

PRE-ASSEMBLY OF BASE PLATES

EN

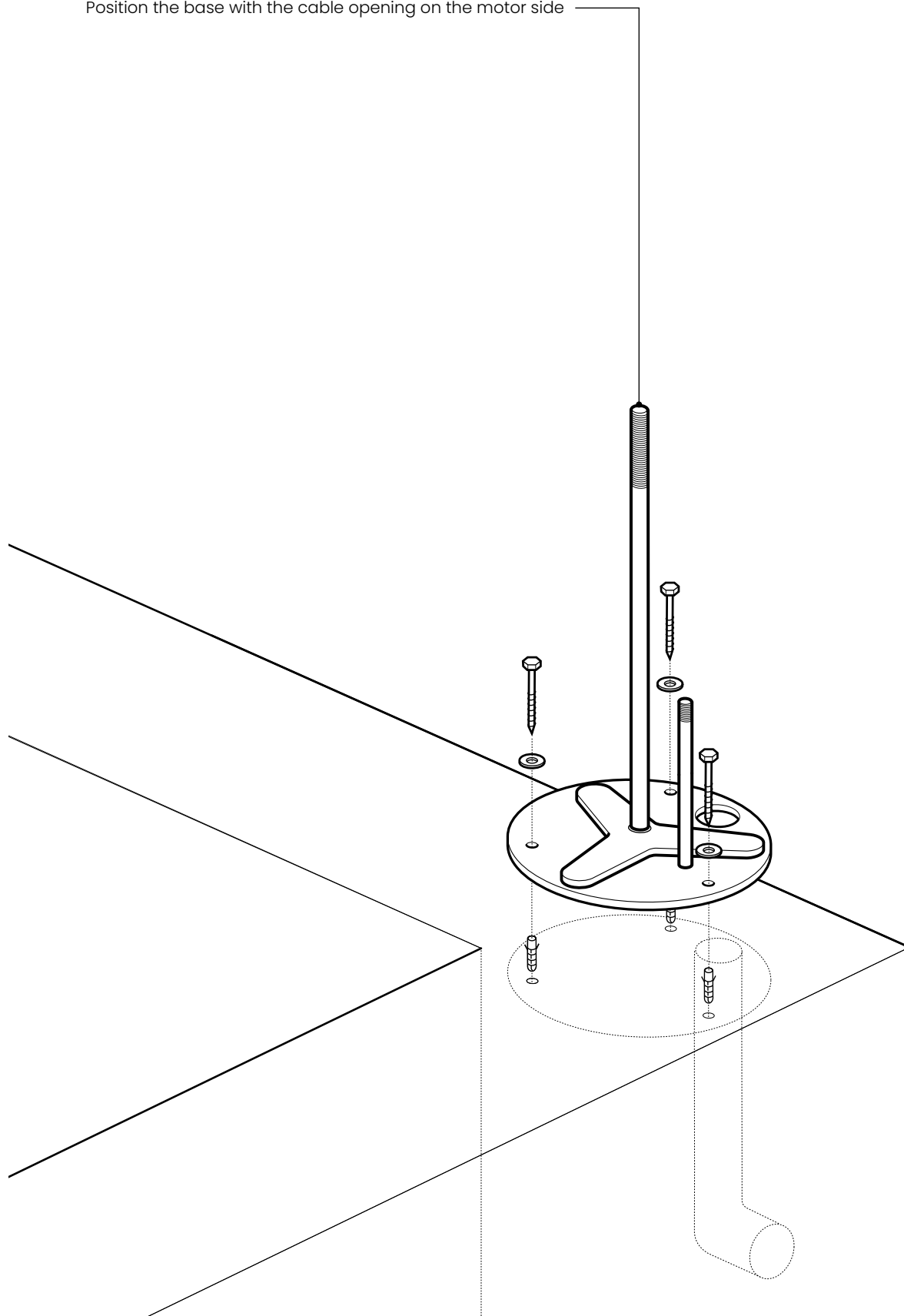


L

BASE PLATE ASSEMBLY

EN

Position the base with the cable opening on the motor side

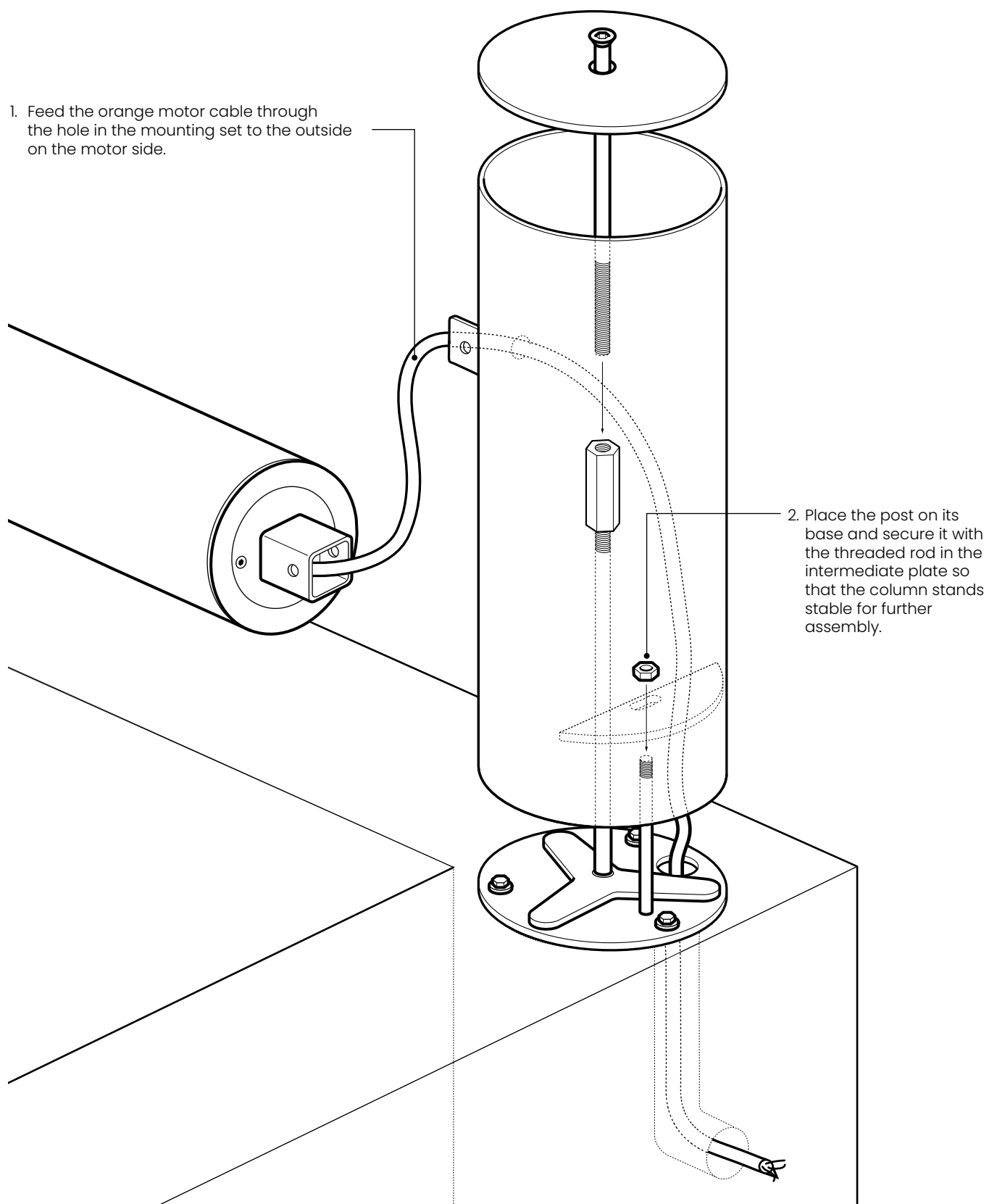


L

POST ASSEMBLY

EN

1. Feed the orange motor cable through the hole in the mounting set to the outside on the motor side.



2. Place the post on its base and secure it with the threaded rod in the intermediate plate so that the column stands stable for further assembly.

L

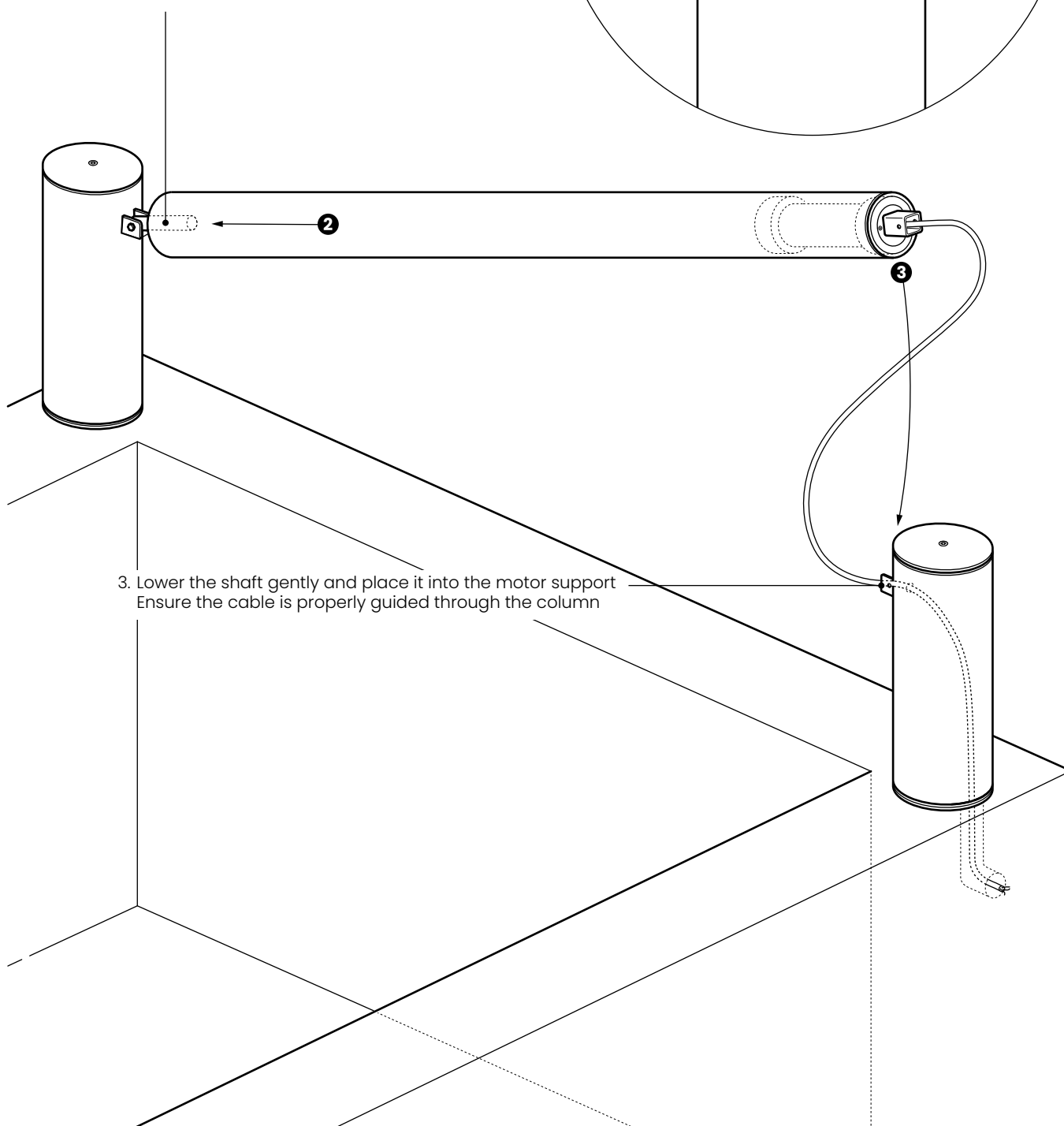
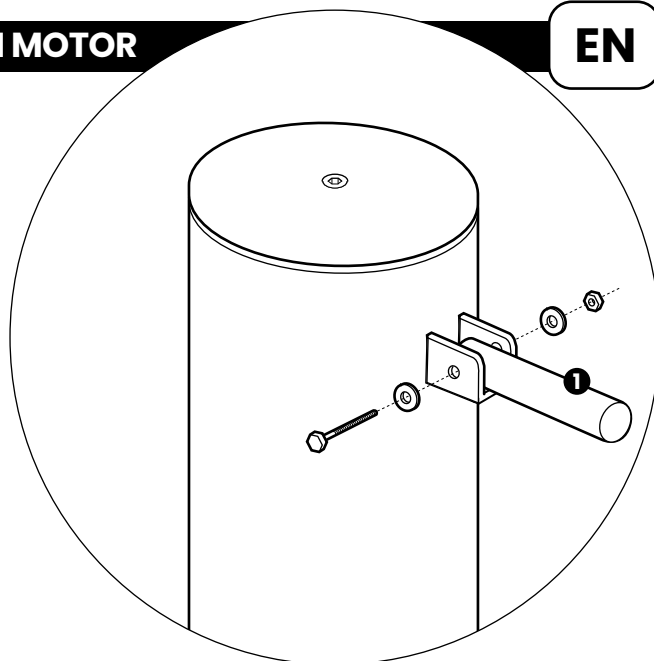
INSTALLING THE ROLLER TUBE WITH MOTOR

EN

1. Mount the shaft on the non-motor side using the corresponding nuts and bolt

2. Insert the tube into the shaft from the non-motor side

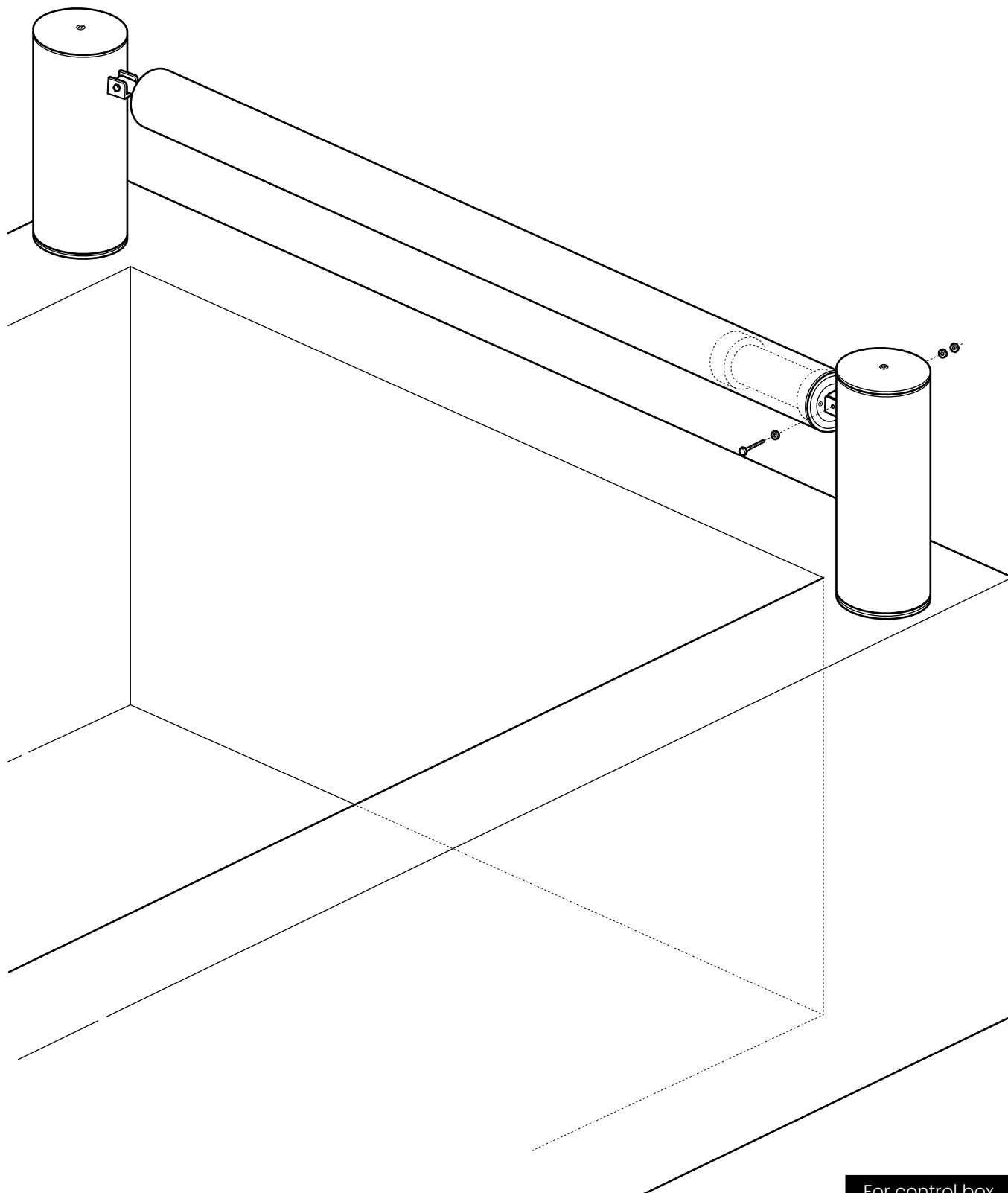
3. Lower the shaft gently and place it into the motor support
Ensure the cable is properly guided through the column



L

SCREW ON ROLLER TUBE

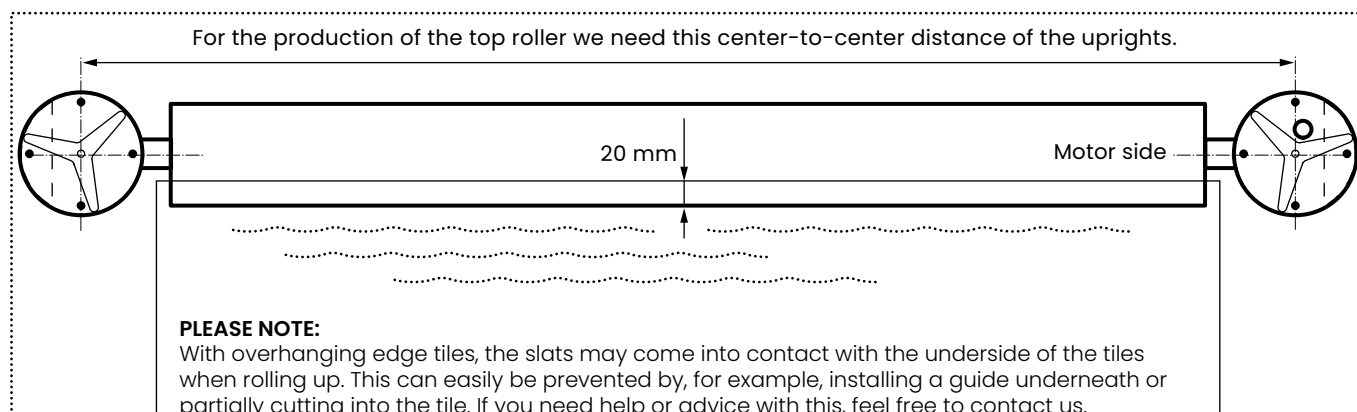
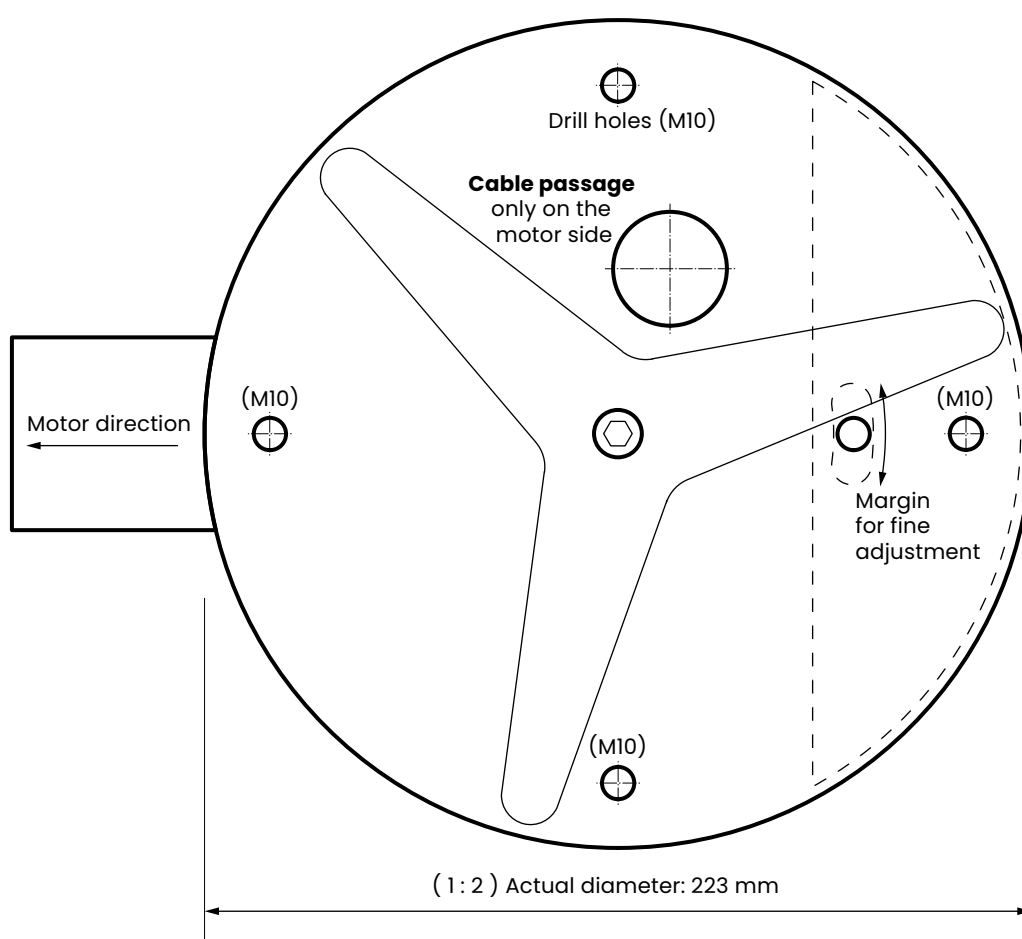
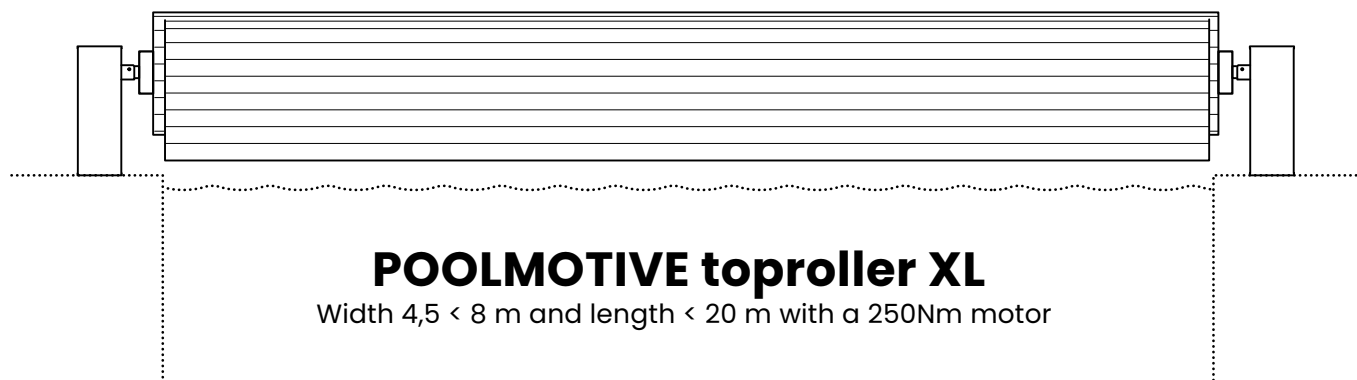
EN



For control box
connection, go
to page 22

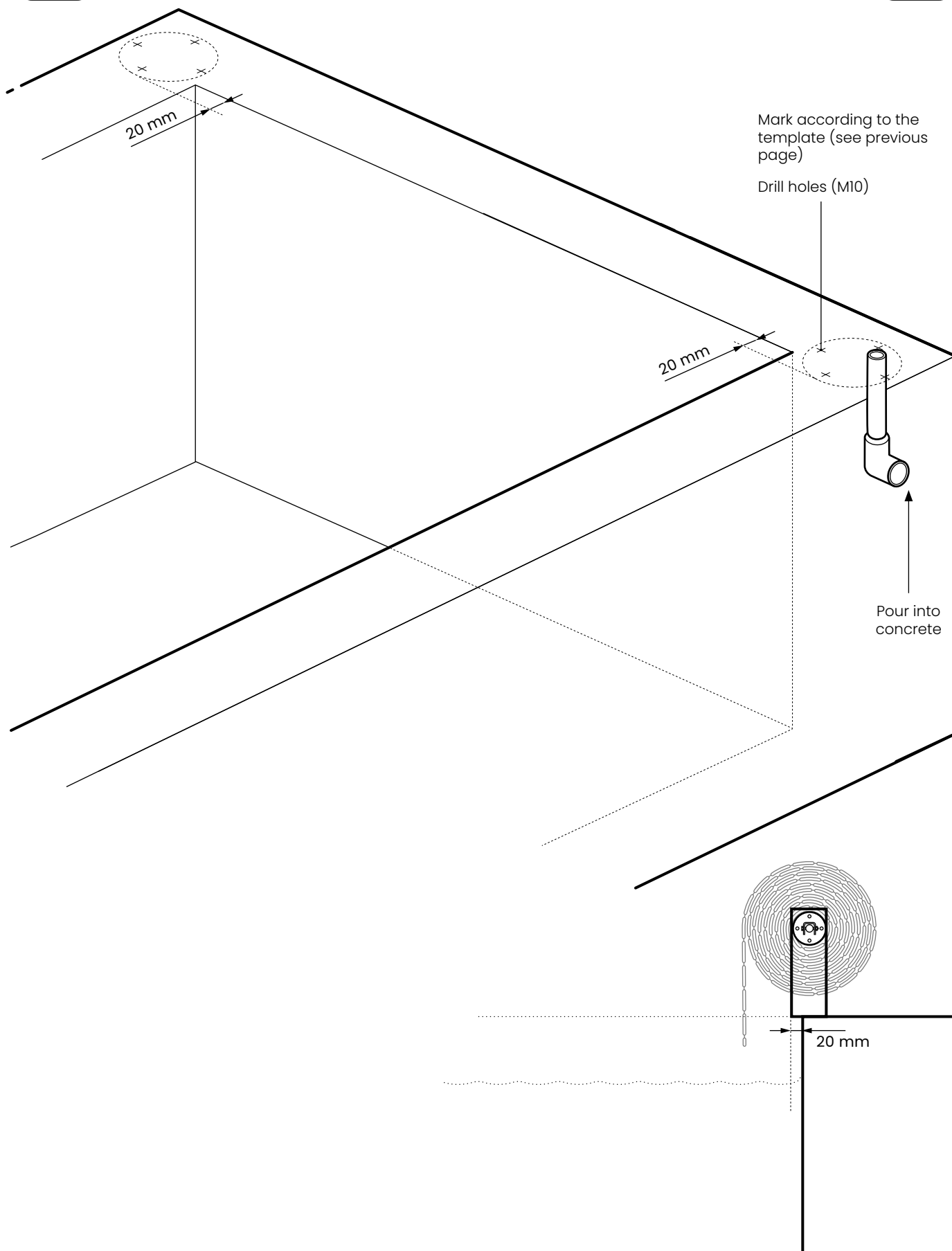
XL MEASURING THE TOP ROLLER

EN



XL PRE-ASSEMBLY OF BASE PLATES

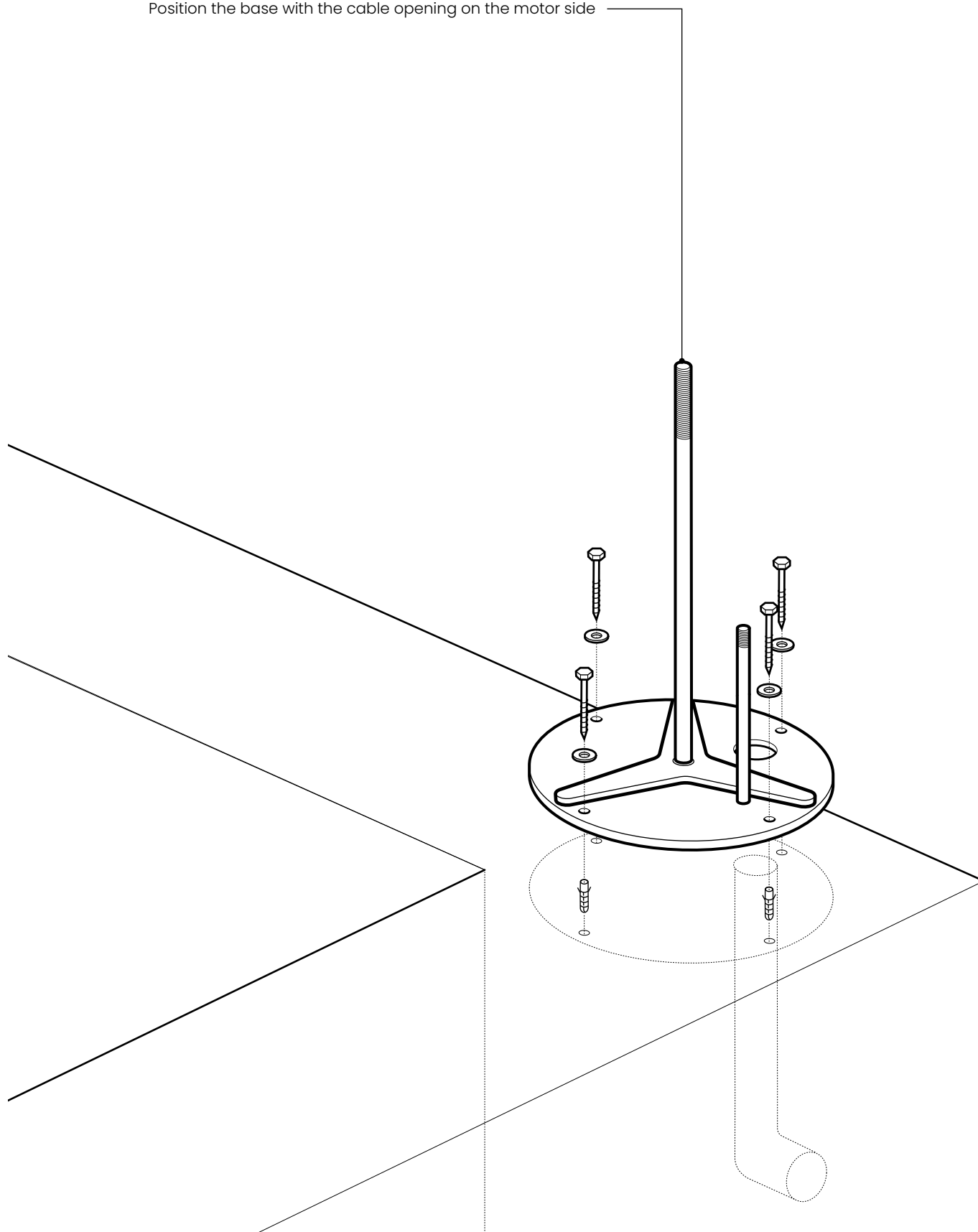
EN



XL BASE PLATE ASSEMBLY

EN

Position the base with the cable opening on the motor side

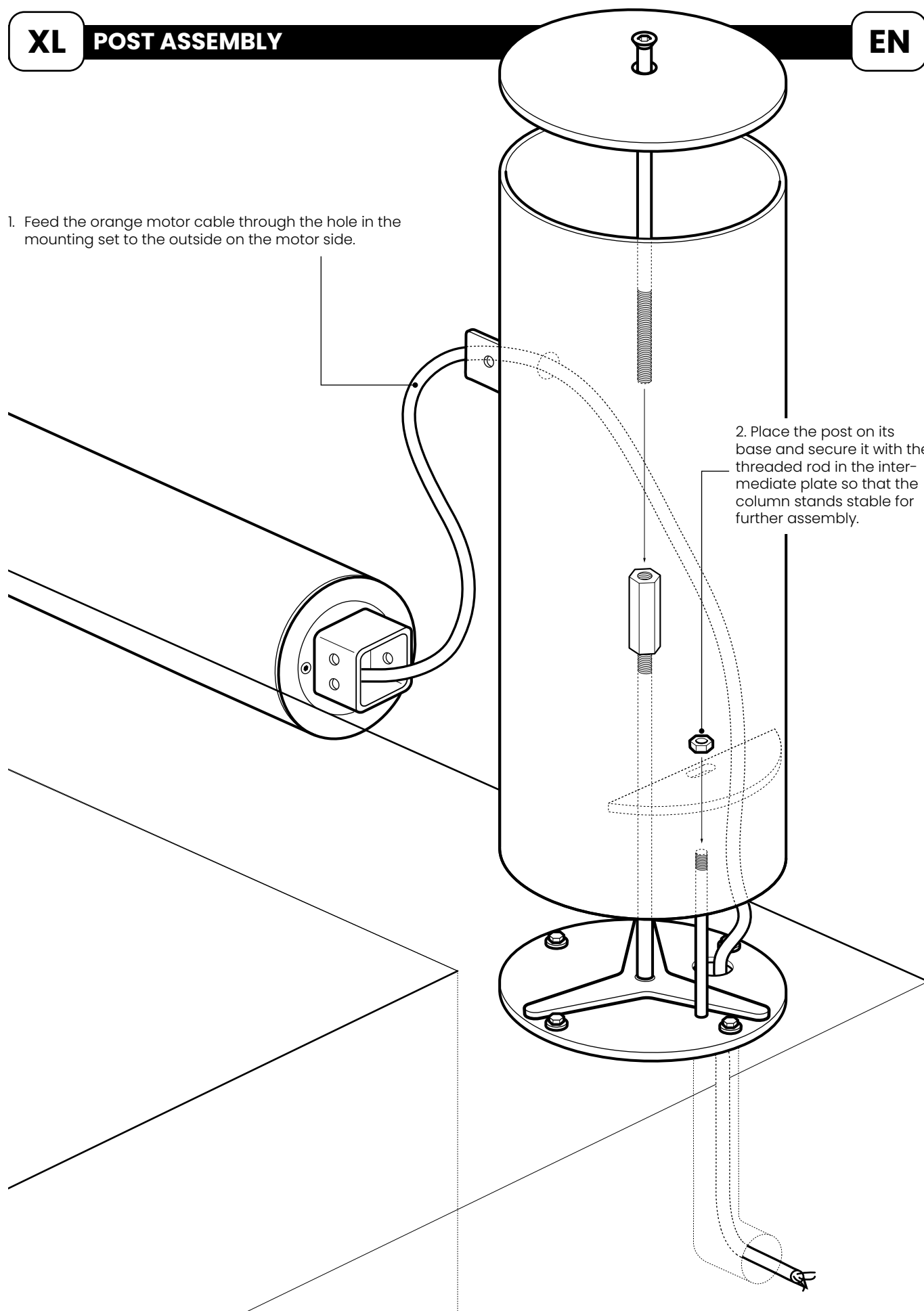


XL POST ASSEMBLY

EN

1. Feed the orange motor cable through the hole in the mounting set to the outside on the motor side.

2. Place the post on its base and secure it with the threaded rod in the intermediate plate so that the column stands stable for further assembly.



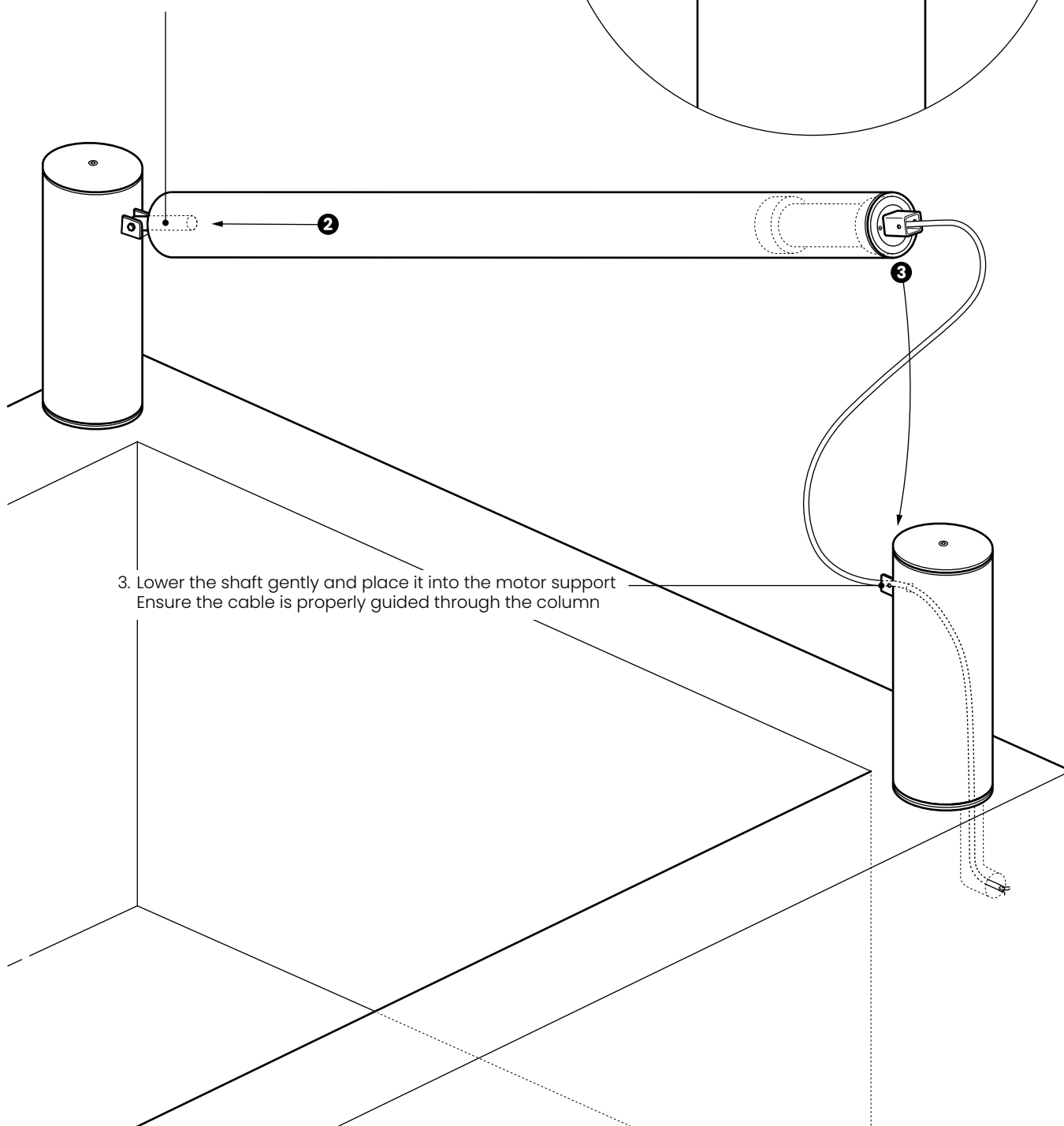
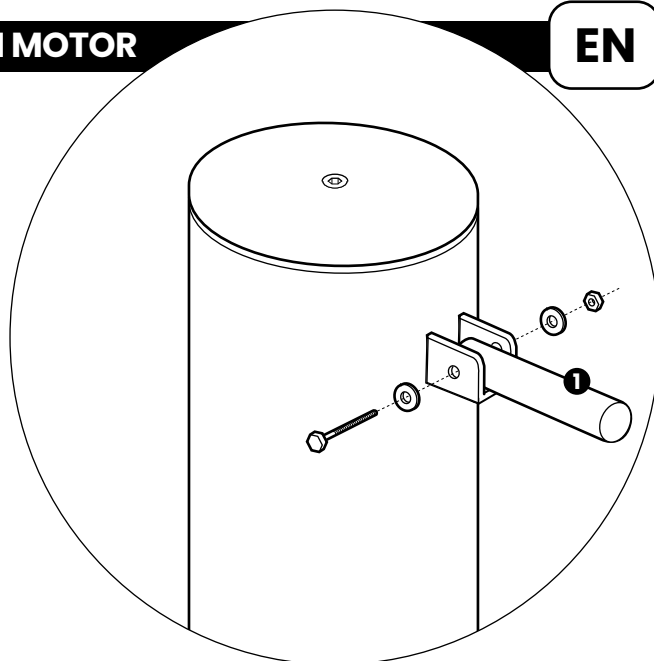
XL INSTALLING THE ROLLER TUBE WITH MOTOR

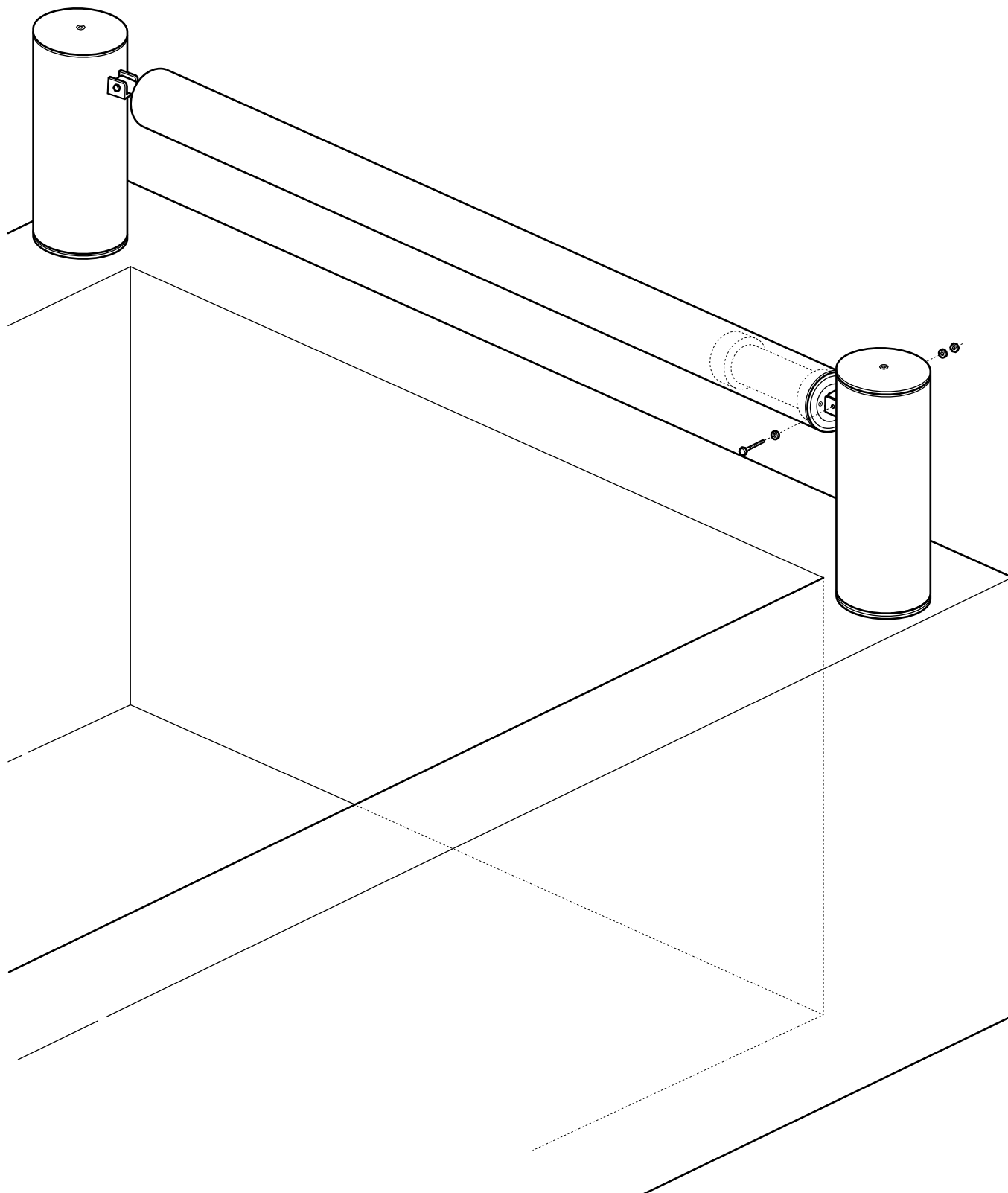
EN

1. Mount the shaft on the non-motor side using the corresponding nuts and bolt

2. Insert the tube into the shaft from the non-motor side

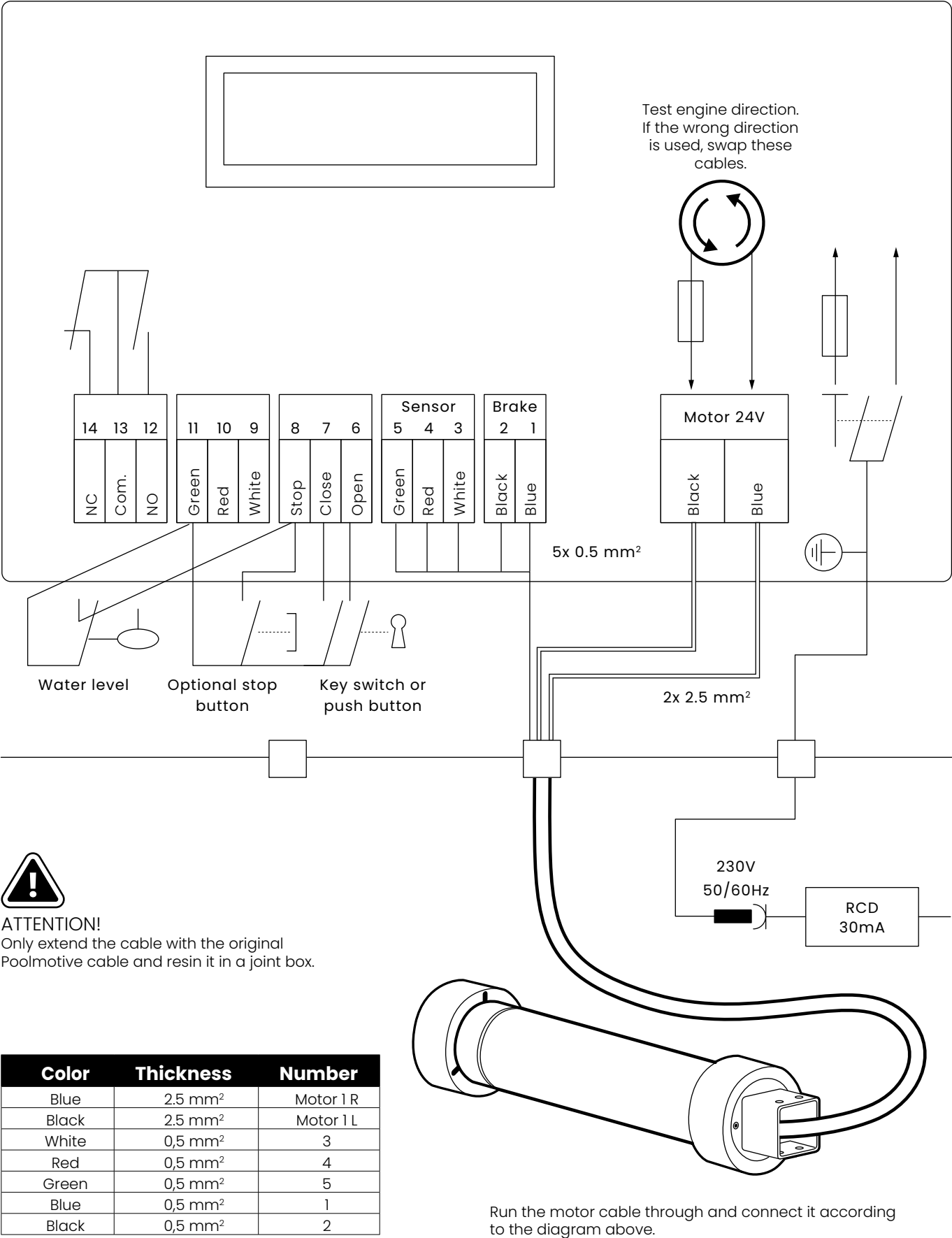
3. Lower the shaft gently and place it into the motor support
Ensure the cable is properly guided through the column



XL SCREW ON ROLLER TUBE**EN**

CONNECTING CONTROL BOX

EN



START-UP

EN



DANGER DUE TO ELECTRICAL CURRENT

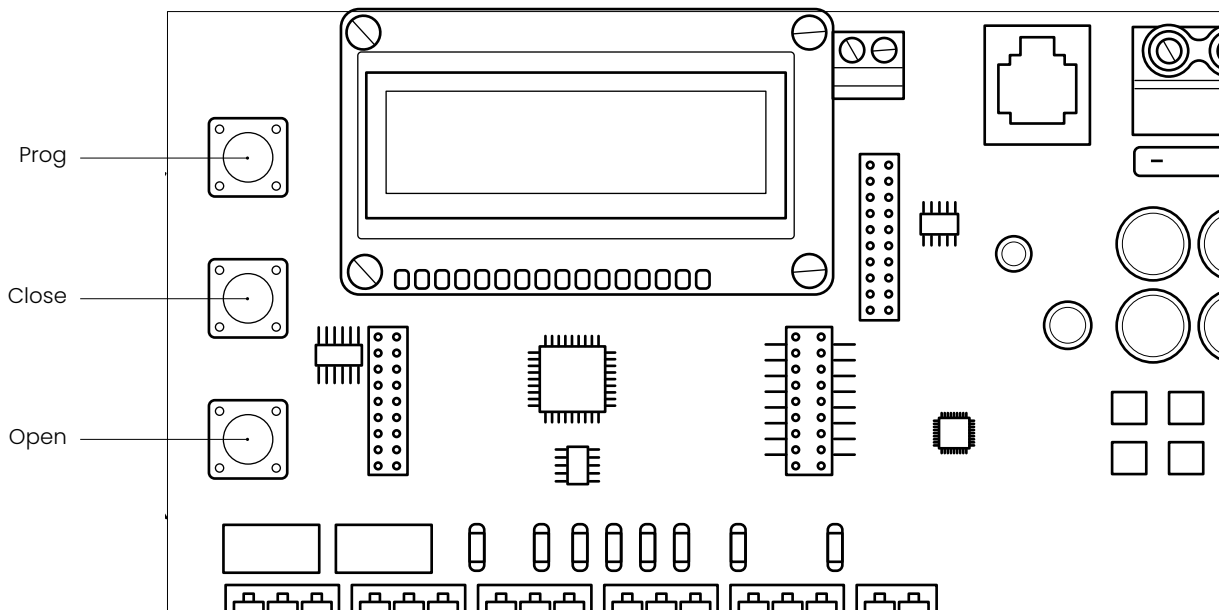
Before starting the machine up, check the operation of the residual current circuit breaker (RCCB) on the machine side!

Check all lines for damage and make sure the electrical connections are secure.



DANGER

Before switching the machine on, make sure that there are no swimmers in the swimming pool!



PROGRAMMING THE FINAL POSITIONS



- When programming the final positions, the operator must have an unobstructed view of the pool.
- There is no automatic switch-off.
- Movement to the final positions can be actuated by an external switch or with the Open (6) and Close (7) button on the control panel, or by using the optional remote control.
- We recommend programming

Programming mode is automatically activated when the end points are deleted. As long as this is active, two LEDs flash. Both LEDs flash simultaneously until position 2 is programmed, after which they flash alternately until position 1 is saved.

ACTIVATION

- Plug in the shock-proof plug.
- Press the power button (1)
 - Control lamp in the power switch is on
 - LED (14) on the control panel is lit
 - LED's for buttons 7, 6 and 5 flash briefly
 - After approximately 5 seconds, the "ready" message appears in the display.
 - The control unit is ready for additional programming

TESTING THE MOTOR'S ROTATION DIRECTION

EN



The rotation direction can be tested by the Open (6) and Close (7) buttons on the control panel. If the pool cover is not within sight, two people are required.

- Press the open button (7).
- The closed cover must begin opening.
- **If the cover moves in the wrong direction, exchange the motor connections at terminal 11.**
- The rotation direction should then also be tested with the external switch. If the rotation direction is incorrect when the external switch is activated, correct the connections at terminals 11, 6 and 7.

Programming Open and Close Positions

Steps	Action	Information on Display
Step 1: Deleting End Points (To program new end points)	Press all 3 buttons (PROG, OPEN and CLOSE) together for 10 seconds. Display shows „Deleting saved points and then „Deleted “. LED next to PROG button starts blinking.	Deleting Saved Points → deleted
Step 2: Programming Position „OPEN“	The cover can be rolled to the desired fully open position using OPEN and CLOSE buttons. Press the PROG and OPEN buttons together for 3 seconds to save the desired Open position. LED blinks alternately with power LED	Position 2 → Saved
Step 3: Programming Position „CLOSE“	Move the cover towards the closed position to define the end position in the fully closed state. Ensure the cover is in the correct position. Press the PROG and CLOSE buttons together for 3 seconds to save the desired closing position.	Position 1 → Saved

INFORMATION SHOWN ON DISPLAY

EN

A variety of information is shown on the display, depending on operating mode.

- In standard operating mode, the motor parameters are displayed. Display information: During running, the bottom line of the display shows the number of impulses (S) on the left and Current value (C in mA) on the right.

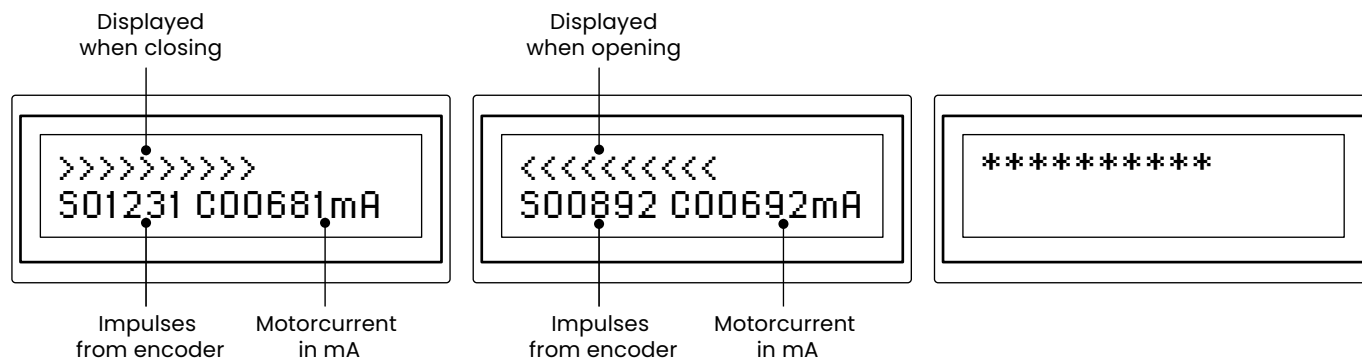


Figure 7:
Display information

- In the event of malfunction, information regarding the possible cause are displayed. See Section 8 (Error messages) for more information.

SERVICE CHECKLIST

Poolmotive recommends creating a log after commissioning. The following data should be noted:

Date of Installation:	
Installer:	
Serial number of Motor:	
Motor current in Motor nameplate	A
Serial number of Control Box:	
Nominal current of Control Box in nameplate	A
Measured values:	
Motorcurrent before position „Closed“	A
Motorcurrent before position „Open“	A
Number of impulses at position “Closed”	
Number of impulses at position “Open”	
Time needed from position “Open” → „Closed“	Sec.
Time needed from position “Closed” → „Open“	Sec.

ERROR MESSAGES

EN

An error is indicated when the LED's next to the programming buttons.
The display will show an error message in accordance with the following table.

IMPORTANT:

In the event of any malfunction in the system, the following must first be checked:

1. Is the plug-in fuse in the control box in order (measuring)?
2. Is there a key switch?
 - a. Yes = disconnect it from the control box before searching for the fault
 - b. No = immediately look for the fault
3. Is the motor cable extended?
 - a. Yes = remove the connection and connect the control box directly to the motor cable
 - b. No = immediately look for the fault

Led foutcode	Storing op het display	Mogelijke oorzaak	Oplossing
All 3 LED's are flashing.	Key switch block.	Key switch is in the OPEN or CLOSE position.	Turn the key switch to the 0 position. The word "ready" appears in the display.
All 3 LED's are flashing.	Sensor error.	Decoder not functioning.	Have the unit inspected by a professional technician. The drive runs out of control in this instance.
All 3 LED's are flashing.	Maximum current.	Motor is blocked or is rough-running. Items in pool.	Remove the items. Have the unit inspected by a professional technician.
None.	None.	The unit only moves in one direction.	Connect the key switch properly. Connect the cable from terminal 6 to terminal 11, or from terminal 7 to terminal 11.
LED for voltage display is not lit.	No display.	Shock-proof plug has no power. Residual current circuit breaker was activated. Power switch (I) not turned on mains fuse () on the power supply board defective.	Check house fuse, have unit inspected by a professional technician. Turn on power switch, check fuse / replace if needed.



Poolmotive

Korenmijt 1
5741PP, Beek en Donk
Netherlands
+31 (0)85 076 88 85
info@poolmotive.com
www.poolmotive.com